

Product datasheet for **TA308968**

OFD1 Rabbit Polyclonal Antibody

Product data:

Product Type:	Primary Antibodies
Applications:	IHC, WB
Recommended Dilution:	WB:1:1000-1:10000
Reactivity:	Human
Host:	Rabbit
Isotype:	IgG
Clonality:	Polyclonal
Immunogen:	Recombinant fragment corresponding to a region within amino acids 136 and 417 of OFD1 (Uniprot ID#O75665)
Formulation:	1XPBS, 20% Glycerol (pH7). 0.025% ProClin 300 was added as a preservative.
Concentration:	lot specific
Purification:	Purified by antigen-affinity chromatography.
Conjugation:	Unconjugated
Storage:	Store at -20°C as received.
Stability:	Stable for 12 months from date of receipt.
Predicted Protein Size:	117 kDa
Gene Name:	OFD1, centriole and centriolar satellite protein
Database Link:	NP_003602 Entrez Gene 8481 Human O75665

Background: This gene is located on the X chromosome and encodes a centrosomal protein. A knockout mouse model has been used to study the effect of mutations in this gene. The mouse gene is also located on the X chromosome, however, unlike the human gene it is not subject to X inactivation. Mutations in this gene are associated with oral-facial-digital syndrome type I and Simpson-Golabi-Behmel syndrome type 2. Many pseudogenes have been identified; a single pseudogene is found on chromosome 5 while as many as fifteen have been found on the Y chromosome. Alternatively spliced transcripts have been described for this gene but the biological validity of these transcripts has not been determined. [provided by RefSeq]

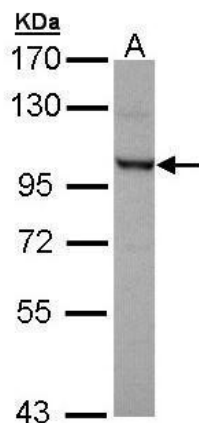


[View online »](#)

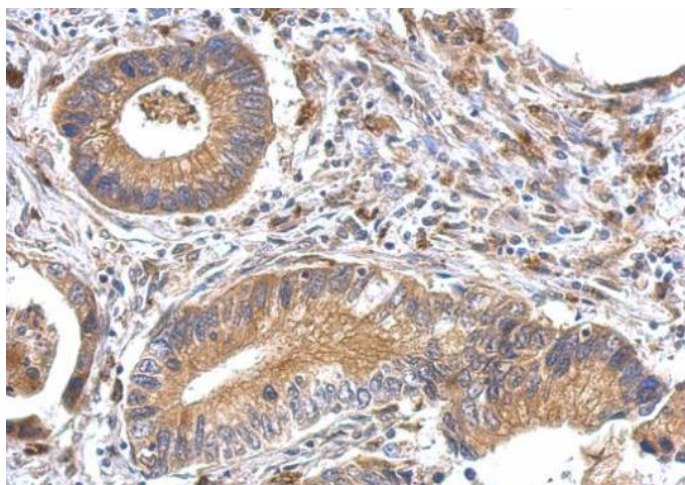
Synonyms: 71-7A; CXorf5; JBTS10; RP23; SGBS2

Protein Families: Druggable Genome

Product images:



Sample (30 ug of whole cell lysate). A: Molt-4.
7.5% SDS PAGE. TA308968 diluted at 1:5000



OFD1 antibody detects OFD1 protein at cytosol on gastric carcinoma by immunohistochemical analysis. Sample: Paraffin-embedded gastric carcinoma. OFD1 antibody (TA308968) dilution: 1:500.