

## Product datasheet for **TA308966**

### KLRC4 Rabbit Polyclonal Antibody

#### Product data:

Product Type:	Primary Antibodies
Applications:	WB
Recommended Dilution:	WB:1:500-1:3000
Reactivity:	Human (Predicted: Chimpanzee)
Host:	Rabbit
Isotype:	IgG
Clonality:	Polyclonal
Immunogen:	Synthetic peptide corresponding to a region within amino acids 1 and 45 of KLRC4 (Uniprot ID#O43908)
Formulation:	0.1M Tris, 0.1M Glycine, 10% Glycerol (pH7). 0.01% Thimerosal was added as a preservative.
Concentration:	lot specific
Purification:	Purified by antigen-affinity chromatography.
Conjugation:	Unconjugated
Storage:	Store at -20°C as received.
Stability:	Stable for 12 months from date of receipt.
Predicted Protein Size:	18 kDa
Gene Name:	killer cell lectin like receptor C4
Database Link:	<a href="#">NP_038459</a> <a href="#">Entrez Gene 8302 Human O43908</a>



[View online »](#)

**Background:**

Natural killer (NK) cells are lymphocytes that can mediate lysis of certain tumor cells and virus-infected cells without previous activation. They can also regulate specific humoral and cell-mediated immunity. NK cells preferentially express several calcium-dependent (C-type) lectins, which have been implicated in the regulation of NK cell function. KLRC4 is a member of the NKG2 group which are expressed primarily in natural killer (NK) cells and encodes a family of transmembrane proteins characterized by a type II membrane orientation (extracellular C terminus) and the presence of a C-type lectin domain. The NKG2 gene family is located within the NK complex, a region that contains several C-type lectin genes preferentially expressed on NK cells. The 3' end of the KLRC4 transcript includes the first non-coding exon found at the 5' end of the adjacent D12S2489E gene transcript. [provided by RefSeq]

**Synonyms:**

NKG2-F; NKG2F

**Note:**

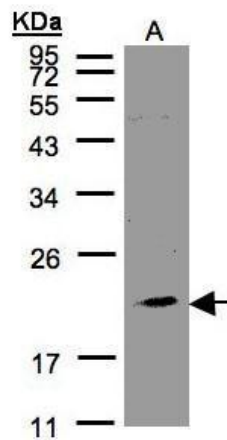
Seq homology of immunogen across species: Chimpanzee (100%)

**Protein Families:**

Transmembrane

**Protein Pathways:**

Antigen processing and presentation

**Product images:**

Sample (30 ug of whole cell lysate). A:293T. 12% SDS PAGE. TA308966 diluted at 1:1000