

Product datasheet for **TA308963**

LUZP1 Rabbit Polyclonal Antibody

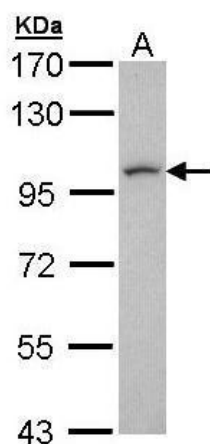
Product data:

| | |
|-------------------------|---|
| Product Type: | Primary Antibodies |
| Applications: | WB |
| Recommended Dilution: | WB:1:500-1:3000 |
| Reactivity: | Human (Predicted: Bovine) |
| Host: | Rabbit |
| Isotype: | IgG |
| Clonality: | Polyclonal |
| Immunogen: | Synthetic peptide corresponding to a region within amino acids 1 and 45 of LUZP1 (Uniprot ID#Q86V48) |
| Formulation: | 0.1M Tris, 0.1M Glycine, 10% Glycerol (pH7). 0.01% Thimerosal was added as a preservative. |
| Concentration: | lot specific |
| Purification: | Purified by antigen-affinity chromatography. |
| Conjugation: | Unconjugated |
| Storage: | Store at -20°C as received. |
| Stability: | Stable for 12 months from date of receipt. |
| Predicted Protein Size: | 120 kDa |
| Gene Name: | leucine zipper protein 1 |
| Database Link: | NP_001136018 Entrez Gene 7798 Human Q86V48 |
| Background: | This gene encodes a protein that contains a leucine zipper motif. The exact function of the encoded protein is not known. In mice this gene affects neural tube closure. Alternative splicing results in multiple transcript variants. [provided by RefSeq] |
| Synonyms: | LUZP |
| Note: | Seq homology of immunogen across species: Bovine (93%) |



[View online »](#)

Product images:



Sample (30 ug of whole cell lysate). A: H1299.
7.5% SDS PAGE. TA308963 diluted at 1:1000