

Product datasheet for **TA308960**

XPNPEP2 Rabbit Polyclonal Antibody

Product data:

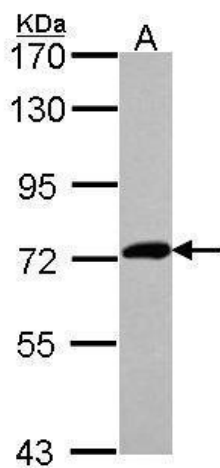
Product Type:	Primary Antibodies
Applications:	WB
Recommended Dilution:	WB:1:500-1:3000
Reactivity:	Human (Predicted: Mouse, Pig, Rat, Bovine)
Host:	Rabbit
Isotype:	IgG
Clonality:	Polyclonal
Immunogen:	Recombinant fragment corresponding to a region within amino acids 286 and 564 of XPNPEP2 (Uniprot ID#O43895)
Formulation:	0.1M Tris, 0.1M Glycine, 10% Glycerol (pH7). 0.01% Thimerosal was added as a preservative.
Purification:	Purified by antigen-affinity chromatography.
Conjugation:	Unconjugated
Storage:	Store at -20°C as received.
Stability:	Stable for 12 months from date of receipt.
Predicted Protein Size:	76 kDa
Gene Name:	X-prolyl aminopeptidase (aminopeptidase P) 2, membrane-bound
Database Link:	NP_003390 Entrez Gene 117522 Rat Entrez Gene 170745 Mouse Entrez Gene 7512 Human O43895
Background:	Aminopeptidase P is a hydrolase specific for N-terminal imido bonds, which are common to several collagen degradation products, neuropeptides, vasoactive peptides, and cytokines. Structurally, the enzyme is a member of the 'pita bread fold' family and occurs in mammalian tissues in both soluble and GPI-anchored membrane-bound forms. A membrane-bound and soluble form of this enzyme have been identified as products of two separate genes. [provided by RefSeq]
Synonyms:	AEACEI; APP2
Note:	Seq homology of immunogen across species: Mouse (89%), Pig (90%), Rat (89%), Bovine (89%)



[View online »](#)

Protein Families: Druggable Genome, Protease

Product images:



Sample (30 ug of whole cell lysate). A: Hep G2.
7.5% SDS PAGE. TA308960 diluted at 1:1000.