

Product datasheet for **TA308957**

Thyroid Hormone Receptor alpha (THRA) Rabbit Polyclonal Antibody

Product data:

Product Type:	Primary Antibodies
Applications:	IF, IP, WB
Recommended Dilution:	ICC/IF:1:100-1:1000; WB:1:500-1:3000
Reactivity:	Human
Host:	Rabbit
Isotype:	IgG
Clonality:	Polyclonal
Immunogen:	Recombinant fragment corresponding to a region within amino acids 317 and 490 of Thyroid Hormone Receptor alpha 2 (Uniprot ID#P10827)
Formulation:	0.1M Tris, 0.1M Glycine, 10% Glycerol (pH7). 0.01% Thimerosal was added as a preservative.
Concentration:	lot specific
Purification:	Purified by antigen-affinity chromatography.
Conjugation:	Unconjugated
Storage:	Store at -20°C as received.
Stability:	Stable for 12 months from date of receipt.
Predicted Protein Size:	55 kDa
Gene Name:	thyroid hormone receptor, alpha
Database Link:	NP_003241 Entrez Gene 7067 Human P10827
Background:	The protein encoded by this gene is a nuclear hormone receptor for triiodothyronine. It is one of the several receptors for thyroid hormone, and has been shown to mediate the biological activities of thyroid hormone. Knockout studies in mice suggest that the different receptors, while having certain extent of redundancy, may mediate different functions of thyroid hormone. Alternatively spliced transcript variants encoding distinct isoforms have been reported. [provided by RefSeq]
Synonyms:	AR7; c-ERBA-1; CHNG6; EAR7; ERB-T-1; ERBA; ERBA1; NR1A1; THRA1; THRA2

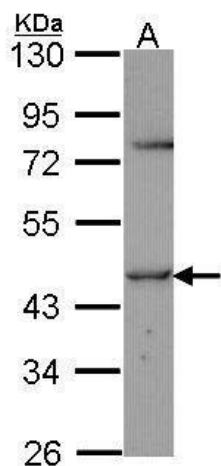


[View online »](#)

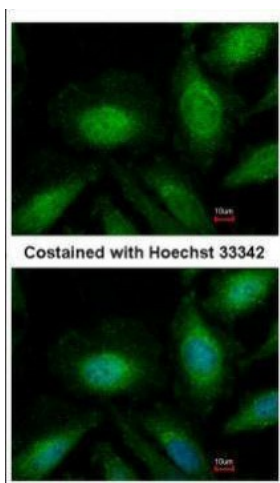
Protein Families: Druggable Genome, Nuclear Hormone Receptor, Transcription Factors

Protein Pathways: Neuroactive ligand-receptor interaction

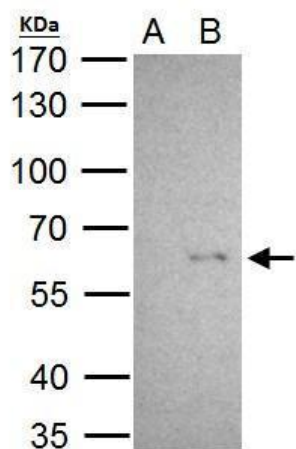
Product images:



Sample (30 ug of whole cell lysate). A: JurKat. 10% SDS PAGE. TA308957 diluted at 1:1000.



Immunofluorescence analysis of paraformaldehyde-fixed HeLa, using Thyroid Hormone Receptor alpha 2 (TA308957) antibody at 1:500 dilution.



Thyroid Hormone Receptor alpha antibody immunoprecipitates Thyroid Hormone Receptor alpha protein in IP experiments. IP Sample: HeLa whole cell lysate/extract A. Control with 2 ug of preimmune rabbit IgG B. Immunoprecipitation of Thyroid Hormone Receptor