

## Product datasheet for **TA308954**

### SET Rabbit Polyclonal Antibody

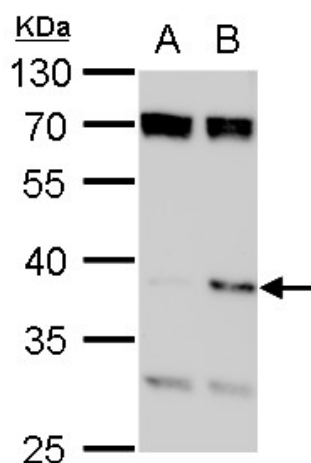
#### Product data:

Product Type:	Primary Antibodies
Applications:	IF, IHC, WB
Recommended Dilution:	ICC/IF:1:100-1:1000; IHC:1:100-1:1000; WB:1:500-1:3000
Reactivity:	Human (Predicted: Mouse, Pig, Chicken, Bovine, X. tropicalis)
Host:	Rabbit
Isotype:	IgG
Clonality:	Polyclonal
Immunogen:	Synthetic peptide corresponding to a region within amino acids 1 and 45 of SET
Formulation:	0.1M Tris, 0.1M Glycine, 10% Glycerol (pH7). 0.01% Thimerosal was added as a preservative.
Concentration:	lot specific
Purification:	Purified by antigen-affinity chromatography.
Conjugation:	Unconjugated
Storage:	Store at -20°C as received.
Stability:	Stable for 12 months from date of receipt.
Predicted Protein Size:	32 kDa
Gene Name:	SET nuclear proto-oncogene
Database Link:	<a href="#">NP_001116293</a> <a href="#">Entrez Gene 56086 Mouse</a> <a href="#">Entrez Gene 6418 Human</a> <a href="#">Q01105</a>
Synonyms:	2PP2A; I2PP2A; IGAAD; IPP2A2; PHAPII; TAF-I; TAF-IBETA
Note:	Seq homology of immunogen across species: Mouse (86%), Xenopus Tropicalis (93%), Pig (100%), Chicken (100%), Bovine (100%)
Protein Families:	Druggable Genome, Phosphatase, Stem cell - Pluripotency

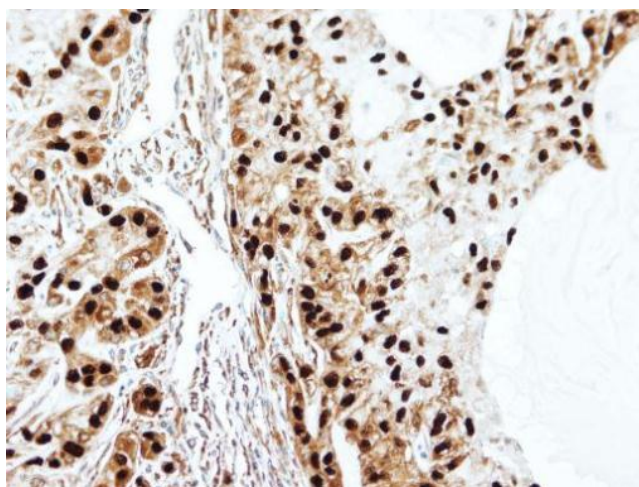


[View online »](#)

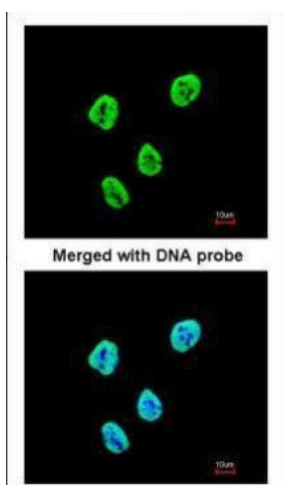
## Product images:



SET antibody, isoform 2-specific detects SET protein by western blot analysis. A. 30 ug 293T whole cell lysate/extract. B. 30 ug whole cell lysate/extract of human SET-transfected 293T cells. 12 % SDS-PAGE. SET antibody, isoform 2-specific (TA308954) diluti



Immunohistochemical analysis of paraffin-embedded A549 xenograft, using SET antibody, isoform 2-specific (TA308954) at 1:100 dilution.



Immunofluorescence analysis of paraformaldehyde-fixed HeLa, using SET antibody, isoform 2-specific (TA308954) at 1:200 dilution.