

Product datasheet for **TA308953**

RSK1 p90 (RPS6KA1) Rabbit Polyclonal Antibody

Product data:

| | |
|-------------------------|---|
| Product Type: | Primary Antibodies |
| Applications: | IF, WB |
| Recommended Dilution: | ICC/IF:1:100-1:1000; WB:1:500-1:3000 |
| Reactivity: | Human (Predicted: Mouse, Chicken, Rat, Bovine) |
| Host: | Rabbit |
| Isotype: | IgG |
| Clonality: | Polyclonal |
| Immunogen: | Recombinant protein fragment contain a sequence corresponding to a region within amino acids 303 and 527 of RSK1 |
| Formulation: | 0.1M Tris, 0.1M Glycine, 10% Glycerol (pH7). 0.01% Thimerosal was added as a preservative. |
| Concentration: | lot specific |
| Purification: | Purified by antigen-affinity chromatography. |
| Conjugation: | Unconjugated |
| Storage: | Store at -20°C as received. |
| Stability: | Stable for 12 months from date of receipt. |
| Predicted Protein Size: | 84 kDa |
| Gene Name: | ribosomal protein S6 kinase A1 |
| Database Link: | NP_001006666 Entrez Gene 20111 Mouse Entrez Gene 81771 Rat Entrez Gene 6195 Human Q15418 |
| Background: | This gene encodes a member of the RSK (ribosomal S6 kinase) family of serine/threonine kinases. This kinase contains 2 nonidentical kinase catalytic domains and phosphorylates various substrates, including members of the mitogen-activated kinase (MAPK) signalling pathway. The activity of this protein has been implicated in controlling cell growth and differentiation. Alternate transcriptional splice variants, encoding different isoforms, have been characterized. [provided by RefSeq] |
| Synonyms: | HU-1; MAPKAPK1A; p90Rsk; RSK; RSK1 |



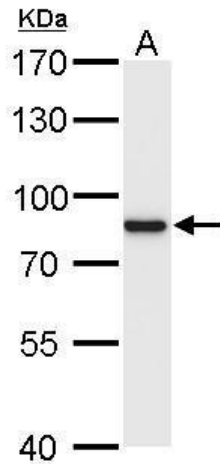
[View online »](#)

Note: Seq homology of immunogen across species: Mouse (97%), Chicken (91%), Rat (95%), Bovine (98%)

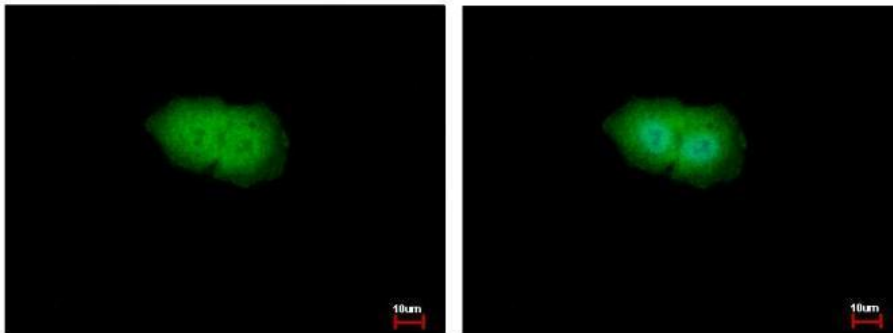
Protein Families: Druggable Genome, Protein Kinase

Protein Pathways: Long-term potentiation, MAPK signaling pathway, mTOR signaling pathway, Neurotrophin signaling pathway, Oocyte meiosis, Progesterone-mediated oocyte maturation

Product images:



p90 RSK1 antibody detects p90 RSK1 protein by Western blot analysis. A. 30 ug HepG2 whole cell lysate/extract. 7.5 % SDS-PAGE. p90 RSK1 antibody (TA308953) dilution: 1:1000



p90 RSK1 antibody detects p90 RSK1 protein at Cytoplasm and Nucleus by immunofluorescent analysis. Sample: HepG2 cells were fixed in 4% paraformaldehyde at RT for 15 min. Green: p90 RSK1 protein stained by RSK1 antibody (TA308953) diluted at 1:500. Blue: