

Product datasheet for **TA308952**

RPA34 (RPA2) Rabbit Polyclonal Antibody

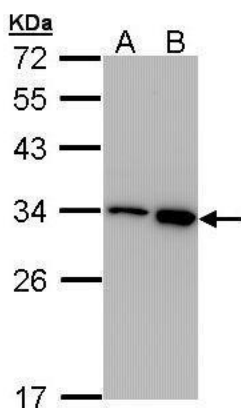
Product data:

Product Type:	Primary Antibodies
Applications:	IF, IHC, WB
Recommended Dilution:	ICC/IF:1:100-1:1000; IHC:1:100-1:1000; WB:1:500-1:3000
Reactivity:	Human (Predicted: Rat, Bovine)
Host:	Rabbit
Isotype:	IgG
Clonality:	Polyclonal
Immunogen:	Recombinant fragment corresponding to a region within amino acids 1 and 202 of RPA32 (Uniprot ID#P15927)
Formulation:	0.1M Tris, 0.1M Glycine, 10% Glycerol (pH7). 0.01% Thimerosal was added as a preservative.
Concentration:	lot specific
Purification:	Purified by antigen-affinity chromatography.
Conjugation:	Unconjugated
Storage:	Store at -20°C as received.
Stability:	Stable for 12 months from date of receipt.
Predicted Protein Size:	29 kDa
Gene Name:	replication protein A2
Database Link:	NP_002937 Entrez Gene 59102 Rat Entrez Gene 6118 Human P15927
Synonyms:	REPA2; RP-A p32; RP-A p34; RPA32
Note:	Seq homology of immunogen across species: Rat (91%), Bovine (92%)
Protein Families:	Druggable Genome, Stem cell - Pluripotency
Protein Pathways:	DNA replication, Homologous recombination, Mismatch repair, Nucleotide excision repair

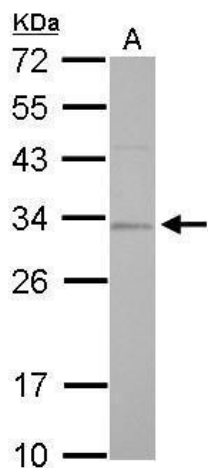


[View online »](#)

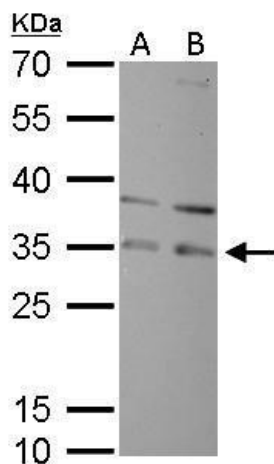
Product images:



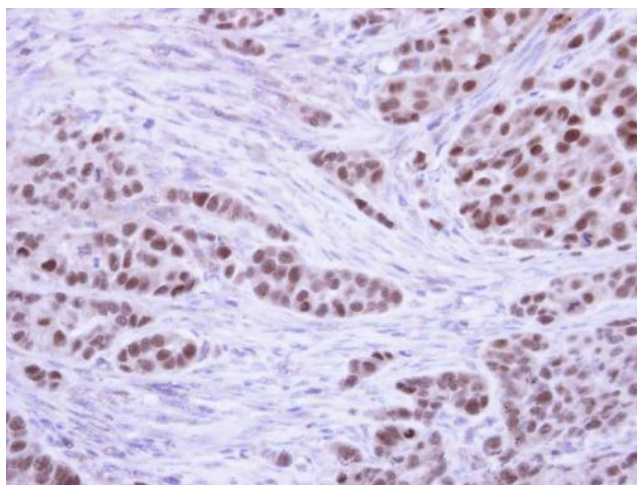
Sample (30 ug of whole cell lysate). A: 293T. B: A431. 12% SDS PAGE. TA308952 diluted at 1:1000.



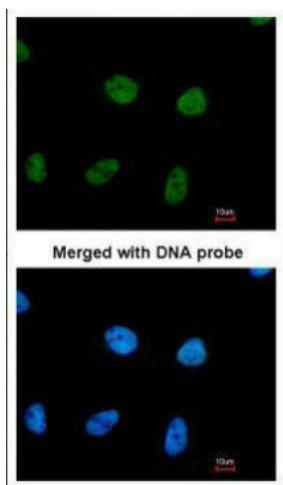
RPA32 antibody detects RPA2 protein by Western blot analysis. A. 30 ug BCL-1 whole cell lysate/extract. 12 % SDS-PAGE. RPA32 antibody (TA308952) dilution: 1:1000



RPA32 antibody detects RPA2 protein by Western blot analysis. A. 30 ug PC-12 whole cell lysate/extract. B. 30 ug Rat2 whole cell lysate/extract. 12 % SDS-PAGE. RPA32 antibody (TA308952) dilution: 1:1000



Immunohistochemical analysis of paraffin-embedded A549 Xenograft, using RPA 32 kDa subunit (TA308952) antibody at 1:100 dilution.



Immunofluorescence analysis of paraformaldehyde-fixed HeLa, using RPA 32 kDa subunit (TA308952) antibody at 1:200 dilution.