

Product datasheet for **TA308951**

ROCK1 Rabbit Polyclonal Antibody

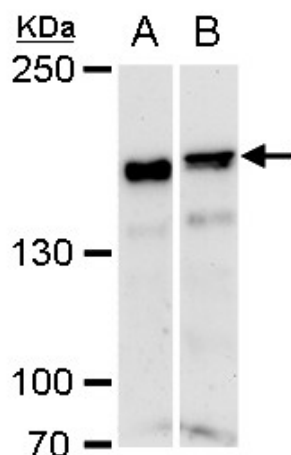
Product data:

Product Type:	Primary Antibodies
Applications:	IF, IHC, IP, WB
Recommended Dilution:	ICC/IF:1:100-1:1000; IHC:1:100-1:1000; WB:1:500-1:3000
Reactivity:	Human
Host:	Rabbit
Isotype:	IgG
Clonality:	Polyclonal
Immunogen:	Recombinant protein fragment contain a sequence corresponding to a region within amino acids 107 and 371 of ROCK1
Formulation:	1XPBS, 20% Glycerol (pH7). 0.025% ProClin 300 was added as a preservative.
Concentration:	lot specific
Purification:	Purified by antigen-affinity chromatography.
Conjugation:	Unconjugated
Storage:	Store at -20°C as received.
Stability:	Stable for 12 months from date of receipt.
Predicted Protein Size:	158 kDa
Gene Name:	Rho associated coiled-coil containing protein kinase 1
Database Link:	NP_005397 Entrez Gene 6093 Human Q13464
Background:	This gene encodes a protein serine/threonine kinase that is activated when bound to the GTP-bound form of Rho. The small GTPase Rho regulates formation of focal adhesions and stress fibers of fibroblasts, as well as adhesion and aggregation of platelets and lymphocytes by shuttling between the inactive GDP-bound form and the active GTP-bound form. Rho is also essential in cytokinesis and plays a role in transcriptional activation by serum response factor. This protein, a downstream effector of Rho, phosphorylates and activates LIM kinase, which in turn, phosphorylates cofilin, inhibiting its actin-depolymerizing activity. [provided by RefSeq]

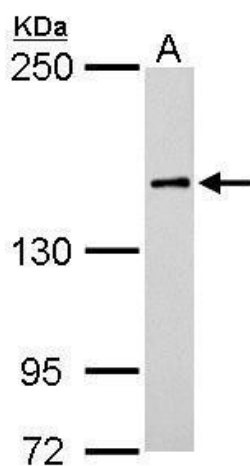


[View online »](#)

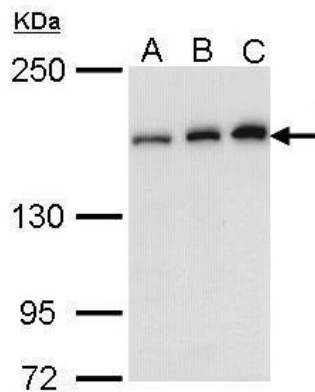
Synonyms:	P160ROCK; ROCK-I
Protein Families:	Druggable Genome, Protein Kinase
Protein Pathways:	Axon guidance, Chemokine signaling pathway, Focal adhesion, Leukocyte transendothelial migration, Pathogenic Escherichia coli infection, Regulation of actin cytoskeleton, TGF-beta signaling pathway, Vascular smooth muscle contraction, Wnt signaling pathway

Product images:

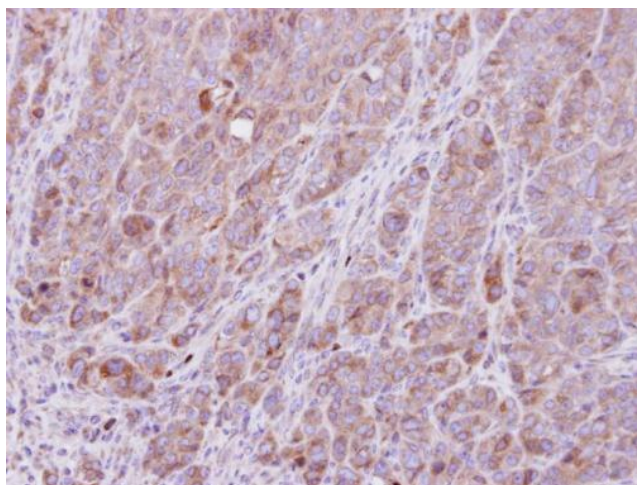
ROCK1 antibody [N1N2], N-term detects ROCK1 protein by western blot analysis. A. 30 ug NIH-3T3 whole cell extract. B. 30 ug C2C12 whole cell extract. 5 % SDS-PAGE. ROCK1 antibody [N1N2], N-term (TA308951) dilution: 1:1000



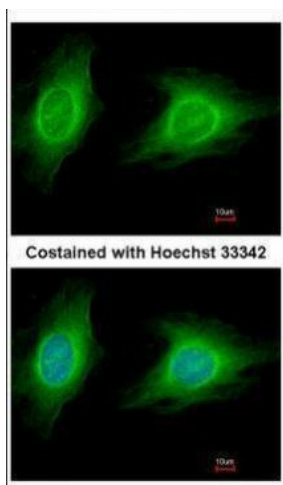
ROCK1 antibody [N1N2], N-term detects ROCK1 protein by Western blot analysis. A. 50 ug rat brain lysate/extract. 5 % SDS-PAGE. ROCK1 antibody [N1N2], N-term (TA308951) dilution: 1:500



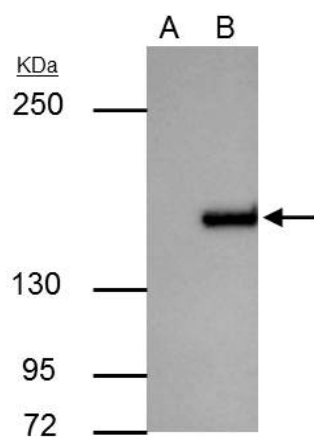
Sample (30 ug of whole cell lysate). A: A431. B: H1299. C: Molt-4. 5% SDS PAGE. TA308951 diluted at 1:1000.



Immunohistochemical analysis of paraffin-embedded DLD1 xenograft, using ROCK1 (TA308951) antibody at 1:500 dilution.



Immunofluorescence analysis of methanol-fixed HeLa, using ROCK1 (TA308951) antibody at 1:200 dilution.



ROCK1 antibody immunoprecipitates ROCK1 protein in IP experiments. IP Sample: A431 whole cell lysate/extract A : Control with 3 ug of pre-immune rabbit IgG B : Immunoprecipitation of ROCK1 by 3 ug of ROCK1 antibody (TA308951) 5% SDS-PAGE The immunoprecipi