

Product datasheet for **TA308948**

RAC1 Rabbit Polyclonal Antibody

Product data:

Product Type:	Primary Antibodies
Applications:	IHC, WB
Recommended Dilution:	IHC:1:100-1:1000; WB:1:500-1:3000
Reactivity:	Human, Mouse (Predicted: Chicken, Dog, Pig, Rat, Xenopus, Bovine, X. tropicalis)
Host:	Rabbit
Isotype:	IgG
Clonality:	Polyclonal
Immunogen:	Recombinant fragment contain a sequence corresponding to a region within amino acids 1 and 196 of RAC1 (Uniprot ID#P63000 isoform B)
Formulation:	0.1M Tris, 0.1M Glycine, 10% Glycerol (pH7). 0.01% Thimerosal was added as a preservative.
Concentration:	lot specific
Purification:	Purified by antigen-affinity chromatography.
Conjugation:	Unconjugated
Storage:	Store at -20°C as received.
Stability:	Stable for 12 months from date of receipt.
Predicted Protein Size:	23 kDa
Gene Name:	ras-related C3 botulinum toxin substrate 1 (rho family, small GTP binding protein Rac1)
Database Link:	NP_061485 Entrez Gene 19353 MouseEntrez Gene 363875 RatEntrez Gene 403955 DogEntrez Gene 5879 Human P63000
Background:	The protein encoded by this gene is a GTPase which belongs to the RAS superfamily of small GTP-binding proteins. Members of this superfamily appear to regulate a diverse array of cellular events, including the control of cell growth, cytoskeletal reorganization, and the activation of protein kinases. Two transcript variants encoding different isoforms have been found for this gene. [provided by RefSeq]
Synonyms:	MIG5; p21-Rac1; Rac-1; TC-25



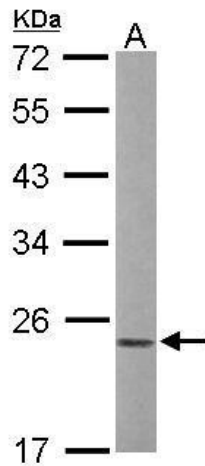
[View online »](#)

Note: Seq homology of immunogen across species: Chicken (90%), Dog (90%), Pig (90%), Rat (90%), Xenopus laevis (90%), Bovine (90%), Xenopus tropicalis (90%)

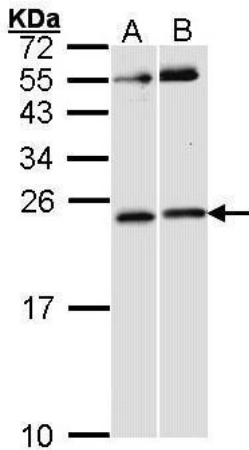
Protein Families: Druggable Genome

Protein Pathways: Adherens junction, Amyotrophic lateral sclerosis (ALS), Axon guidance, B cell receptor signaling pathway, Chemokine signaling pathway, Colorectal cancer, Epithelial cell signaling in Helicobacter pylori infection, Fc epsilon RI signaling pathway, Fc gamma R-mediated phagocytosis, Focal adhesion, Leukocyte transendothelial migration, MAPK signaling pathway, Natural killer cell mediated cytotoxicity, Neurotrophin signaling pathway, Pancreatic cancer, Pathways in cancer, Regulation of actin cytoskeleton, Renal cell carcinoma, Toll-like receptor signaling pathway, VEGF signaling pathway, Viral myocarditis, Wnt signaling pathway

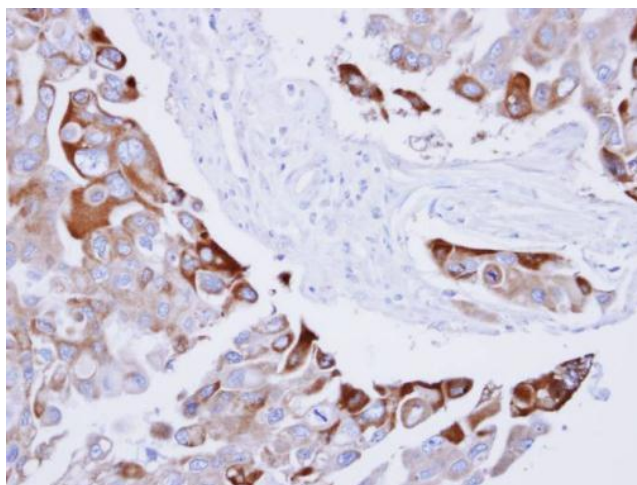
Product images:



Sample (50 ug of whole cell lysate). A: mouse liver. 12% SDS PAGE. TA308948 diluted at 1:1000.



Sample (30 ug of whole cell lysate). A: HeLa. B: Raji. 12% SDS PAGE. TA308948 diluted at 1:1000.



Immunohistochemical analysis of paraffin-embedded H441 xenograft, using RAC1 (TA308948) antibody at 1:100 dilution.