

## Product datasheet for **TA308946**

### PSMC6 Rabbit Polyclonal Antibody

#### Product data:

Product Type:	Primary Antibodies
Applications:	IF, IHC, WB
Recommended Dilution:	ICC/IF:1:100-1:1000; IHC:1:100-1:1000; WB:1:500-1:3000
Reactivity:	Human, Mouse (Predicted: Rat, Zebrafish, Chicken, Bovine, X. tropicalis)
Host:	Rabbit
Isotype:	IgG
Clonality:	Polyclonal
Immunogen:	Recombinant fragment corresponding to a region within amino acids 1 and 301 of PSMC6 (Uniprot ID#P62333)
Formulation:	0.1M Tris, 0.1M Glycine, 10% Glycerol (pH7). 0.01% Thimerosal was added as a preservative.
Concentration:	lot specific
Purification:	Purified by antigen-affinity chromatography.
Conjugation:	Unconjugated
Storage:	Store at -20°C as received.
Stability:	Stable for 12 months from date of receipt.
Predicted Protein Size:	46 kDa
Gene Name:	proteasome 26S subunit, ATPase 6
Database Link:	<a href="#">NP_002797</a> <a href="#">Entrez Gene 67089 Mouse</a> <a href="#">Entrez Gene 289990 Rat</a> <a href="#">Entrez Gene 5706 Human</a> <a href="#">P62333</a>



[View online »](#)

**Background:**

The 26S proteasome is a multicatalytic proteinase complex with a highly ordered structure composed of 2 complexes, a 20S core and a 19S regulator. The 20S core is composed of 4 rings of 28 non-identical subunits; 2 rings are composed of 7 alpha subunits and 2 rings are composed of 7 beta subunits. The 19S regulator is composed of a base, which contains 6 ATPase subunits and 2 non-ATPase subunits, and a lid, which contains up to 10 non-ATPase subunits. Proteasomes are distributed throughout eukaryotic cells at a high concentration and cleave peptides in an ATP/ubiquitin-dependent process in a non-lysosomal pathway. An essential function of a modified proteasome, the immunoproteasome, is the processing of class I MHC peptides. This gene encodes one of the ATPase subunits, a member of the triple-A family of ATPases which have a chaperone-like activity. Pseudogenes have been identified on chromosomes 8 and 12. [provided by RefSeq]

**Synonyms:**

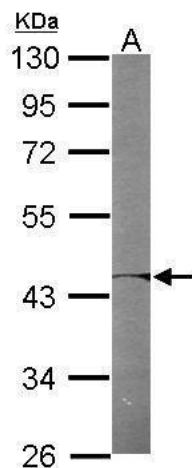
CADP44; HEL-S-73; p42; P44; SUG2

**Note:**

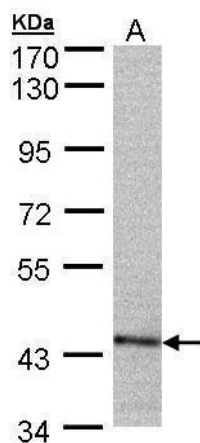
Seq homology of immunogen across species: Rat (100%), Zebrafish (100%), Xenopus Tropicalis (100%), Chicken (100%), Bovine (100%)

**Protein Pathways:**

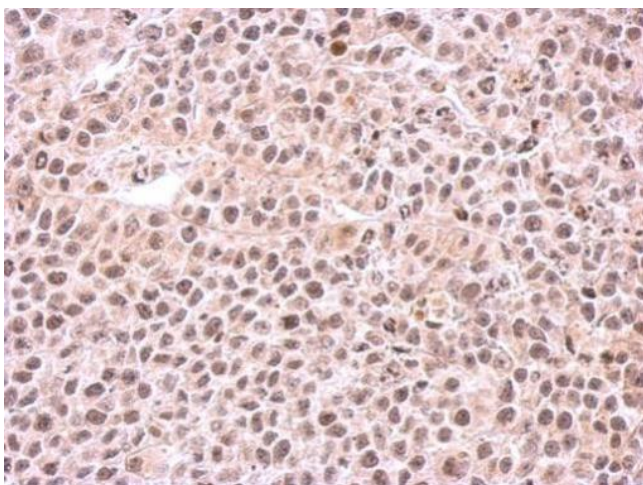
Proteasome

**Product images:**

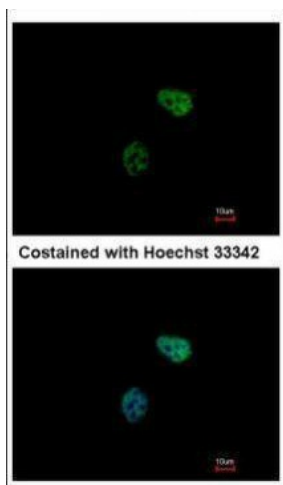
Sample (50 ug of whole cell lysate). A: Mouse brain. 10% SDS PAGE. TA308946 diluted at 1:1000.



Sample (30 ug of whole cell lysate). A: 293T. 7.5% SDS PAGE. TA308946 diluted at 1:500



Immunohistochemical analysis of paraffin-embedded HeLa xenograft, using PSMC6 (TA308946) antibody at 1:500 dilution.



Immunofluorescence analysis of paraformaldehyde-fixed HeLa, using PSMC6 (TA308946) antibody at 1:500 dilution.