

Product datasheet for **TA308945**

PSMA7 Rabbit Polyclonal Antibody

Product data:

Product Type:	Primary Antibodies
Applications:	IHC, WB
Recommended Dilution:	IHC:1:100-1:1000; WB:1:500-1:3000
Reactivity:	Human, Mouse (Predicted: Rat, Bovine)
Host:	Rabbit
Isotype:	IgG
Clonality:	Polyclonal
Immunogen:	Recombinant fragment corresponding to a region within amino acids 1 and 205 of Proteasome 20S alpha 7 (Uniprot ID#O14818)
Formulation:	0.1M Tris, 0.1M Glycine, 20% Glycerol (pH7). 0.01% Thimerosal was added as a preservative.
Concentration:	lot specific
Purification:	Purified by antigen-affinity chromatography.
Conjugation:	Unconjugated
Storage:	Store at -20°C as received.
Stability:	Stable for 12 months from date of receipt.
Predicted Protein Size:	28 kDa
Gene Name:	proteasome subunit alpha 7
Database Link:	NP_002783 Entrez Gene 26444 Mouse Entrez Gene 29674 Rat Entrez Gene 5688 Human O14818



[View online »](#)

Background:

The proteasome is a multicatalytic proteinase complex with a highly ordered ring-shaped 20S core structure. The core structure is composed of 4 rings of 28 non-identical subunits; 2 rings are composed of 7 alpha subunits and 2 rings are composed of 7 beta subunits. Proteasomes are distributed throughout eukaryotic cells at a high concentration and cleave peptides in an ATP/ubiquitin-dependent process in a non-lysosomal pathway. An essential function of a modified proteasome, the immunoproteasome, is the processing of class I MHC peptides. This gene encodes a member of the peptidase T1A family, that is a 20S core alpha subunit. This particular subunit has been shown to interact specifically with the hepatitis B virus X protein, a protein critical to viral replication. In addition, this subunit is involved in regulating hepatitis virus C internal ribosome entry site (IRES) activity, an activity essential for viral replication. This core alpha subunit is also involved in regulating the hypoxia-inducible factor-1alpha, a transcription factor important for cellular responses to oxygen tension. Multiple isoforms of this subunit arising from alternative splicing may exist but alternative transcripts for only two isoforms have been defined. A pseudogene has been identified on chromosome 9. [provided by RefSeq]

Synonyms:

C6; HEL-S-276; HSPC; RC6-1; XAPC7

Note:

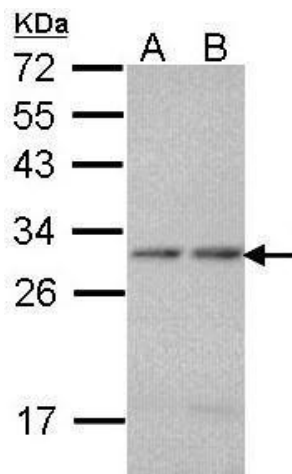
Seq homology of immunogen across species: Rat (100%), Bovine (100%)

Protein Families:

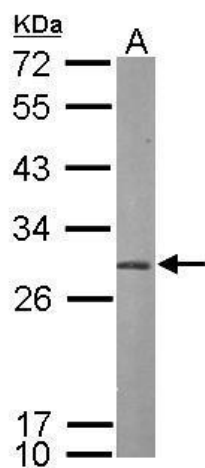
Druggable Genome, Protease

Protein Pathways:

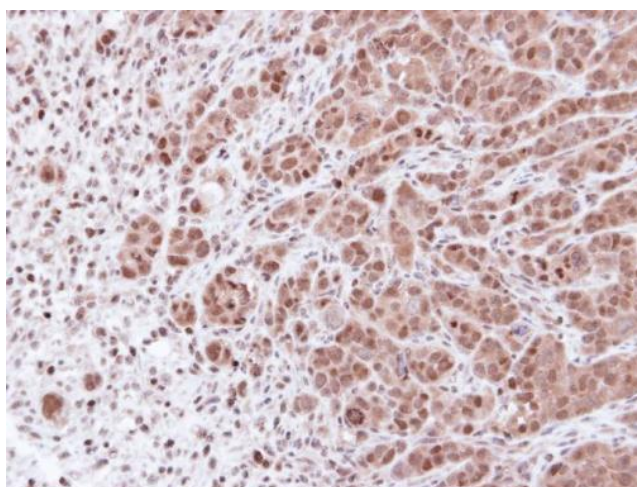
Proteasome

Product images:

Sample (30 ug of whole cell lysate). A: A431. B: H1299. 12% SDS PAGE. TA308945 diluted at 1:1000.



Sample (50 ug of whole cell lysate). A: mouse brain. 12% SDS PAGE. TA308945 diluted at 1:1000.



Immunohistochemical analysis of paraffin-embedded DLD-1 xenograft, using proteasome alpha 7 (TA308945) antibody at 1:100 dilution.