

## Product datasheet for **TA308943**

### Proteasome subunit alpha type 6 (PSMA6) Rabbit Polyclonal Antibody

#### Product data:

Product Type:	Primary Antibodies
Applications:	IF, IHC, WB
Recommended Dilution:	ICC/IF:1:100-1:1000; IHC:1:100-1:1000; WB:1:500-1:3000
Reactivity:	Human, Mouse (Predicted: Chimpanzee, Bovine, Rhesus Monkey)
Host:	Rabbit
Isotype:	IgG
Clonality:	Polyclonal
Immunogen:	Recombinant fragment contain a sequence corresponding to a region within amino acids 57 and 246 of Proteasome 20S alpha 6
Formulation:	0.1M Tris, 0.1M Glycine, 20% Glycerol (pH7). 0.01% Thimerosal was added as a preservative.
Concentration:	lot specific
Purification:	Purified by antigen-affinity chromatography.
Conjugation:	Unconjugated
Storage:	Store at -20°C as received.
Stability:	Stable for 12 months from date of receipt.
Predicted Protein Size:	27 kDa
Gene Name:	proteasome subunit alpha 6
Database Link:	<a href="#">NP_002782</a> <a href="#">Entrez Gene 26443 Mouse</a> <a href="#">Entrez Gene 5687 Human</a> <a href="#">P60900</a>

**Background:** The proteasome is a multicatalytic proteinase complex with a highly ordered ring-shaped 20S core structure. The core structure is composed of 4 rings of 28 non-identical subunits; 2 rings are composed of 7 alpha subunits and 2 rings are composed of 7 beta subunits. Proteasomes are distributed throughout eukaryotic cells at a high concentration and cleave peptides in an ATP/ubiquitin-dependent process in a non-lysosomal pathway. An essential function of a modified proteasome, the immunoproteasome, is the processing of class I MHC peptides. This gene encodes a member of the peptidase T1A family, that is a 20S core alpha subunit. A pseudogene has been identified on the Y chromosome. [provided by RefSeq]



[View online »](#)

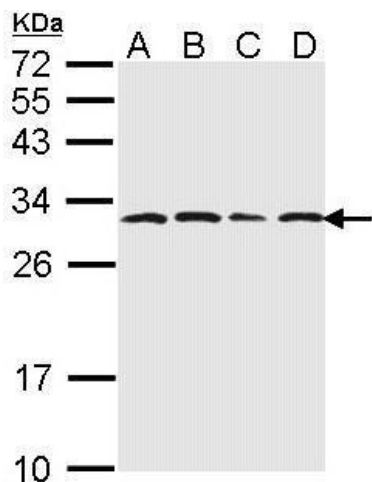
**Synonyms:** IOTA; p27K; PROS27

**Note:** Seq homology of immunogen across species: Rhesus Monkey (100%), Chimpanzee (100%), Bovine (100%)

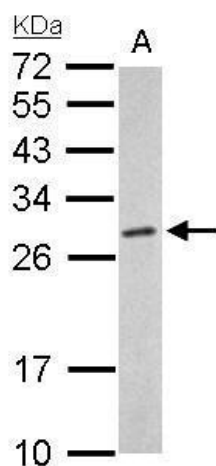
**Protein Families:** Druggable Genome, Protease, Stem cell - Pluripotency

**Protein Pathways:** Proteasome

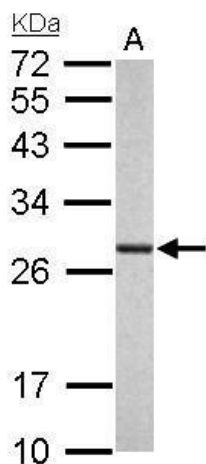
**Product images:**



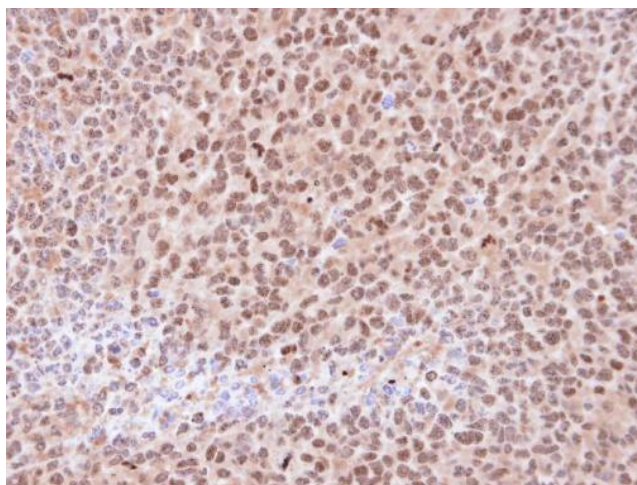
Sample (30 ug of whole cell lysate). A: 293T. B: A431. C: H1299. D: Hela. 12% SDS PAGE. TA308943 diluted at 1:1000.



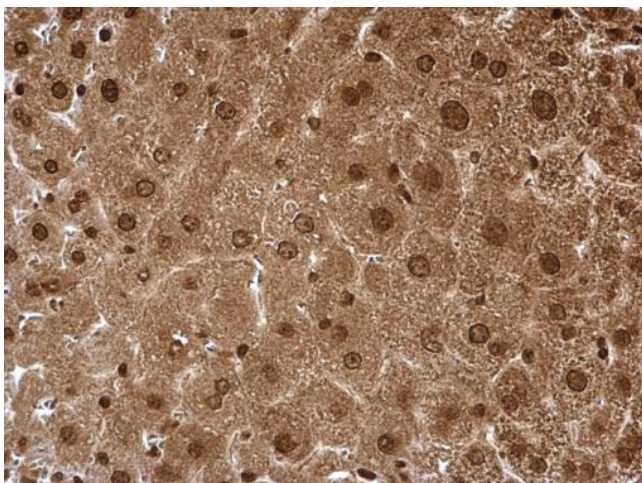
Proteasome 20S alpha 6 antibody detects PSMA6 protein by Western blot analysis. A: 50 ug mouse liver lysate/extract. 12 % SDS-PAGE. Proteasome 20S alpha 6 antibody (TA308943) dilution: 1:1000



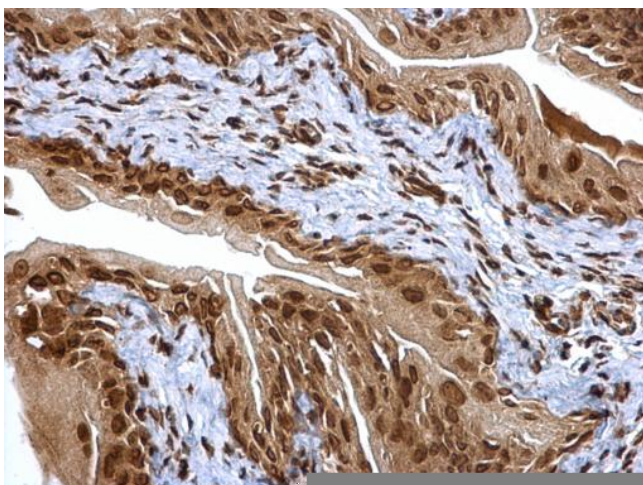
Proteasome 20S alpha 6 antibody detects PSMA6 protein by Western blot analysis. A. 50 ug rat liver lysate/extract. 12 % SDS-PAGE. Proteasome 20S alpha 6 antibody (TA308943) dilution: 1:1000



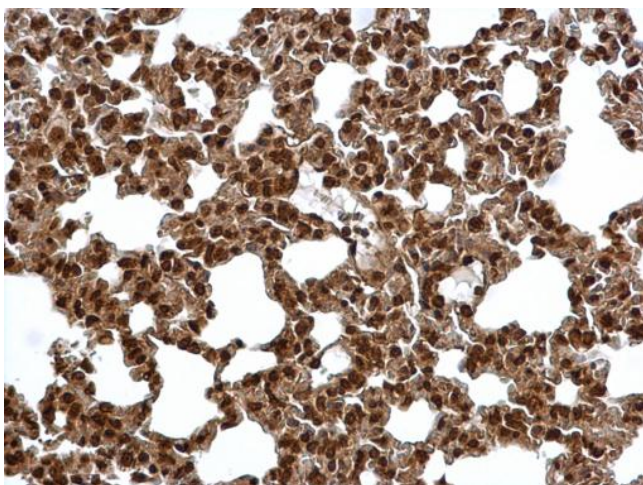
Immunohistochemical analysis of paraffin-embedded H1299 xenograft, using 20S Proteasome alpha6 (TA308943) antibody at 1:100 dilution.



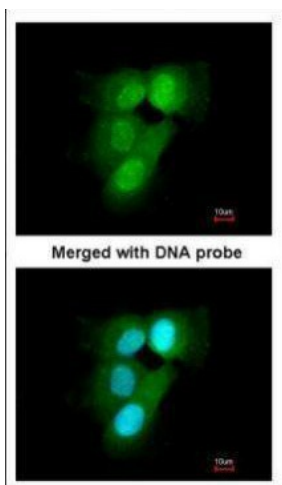
Proteasome 20S alpha 6 antibody detects Proteasome 20S alpha 6 protein at cytosol and nucleus on mouse liver by immunohistochemical analysis. Sample: Paraffin-embedded mouse liver. Proteasome 20S alpha 6 antibody (TA308943) dilution: 1:500.



Proteasome 20S alpha 6 antibody detects Proteasome 20S alpha 6 protein at cytosol and nucleus on mouse urinary bladder by immunohistochemical analysis. Sample: Paraffin-embedded mouse urinary bladder. Proteasome 20S alpha 6 antibody (TA308943) dilution: 1



Proteasome 20S alpha 6 antibody detects Proteasome 20S alpha 6 protein at cytosol and nucleus on mouse lung by immunohistochemical analysis. Sample: Paraffin-embedded mouse lung. Proteasome 20S alpha 6 antibody (TA308943) dilution: 1:500.



Immunofluorescence analysis of paraformaldehyde-fixed A431, using 20S Proteasome alpha6 (TA308943) antibody at 1:200 dilution.