

Product datasheet for **TA308942**

Proteasome subunit alpha type 6 (PSMA6) Rabbit Polyclonal Antibody

Product data:

Product Type:	Primary Antibodies
Applications:	IF, WB
Recommended Dilution:	ICC/IF:1:100-1:1000; WB:1:500-1:3000
Reactivity:	Human, Mouse (Predicted: Rat, Sheep, Chimpanzee, Bovine, Rhesus Monkey)
Host:	Rabbit
Isotype:	IgG
Clonality:	Polyclonal
Immunogen:	Recombinant fragment contain a sequence corresponding to a region within amino acids 1 and 234 of Proteasome 20S alpha 6 (Uniprot ID#P60900)
Formulation:	0.1M Tris, 0.1M Glycine, 10% Glycerol (pH7). 0.01% Thimerosal was added as a preservative.
Concentration:	lot specific
Purification:	Purified by antigen-affinity chromatography.
Conjugation:	Unconjugated
Storage:	Store at -20°C as received.
Stability:	Stable for 12 months from date of receipt.
Predicted Protein Size:	27 kDa
Gene Name:	proteasome subunit alpha 6
Database Link:	NP_002782 Entrez Gene 26443 Mouse Entrez Gene 29673 Rat Entrez Gene 5687 Human P60900

Background: The proteasome is a multicatalytic proteinase complex with a highly ordered ring-shaped 20S core structure. The core structure is composed of 4 rings of 28 non-identical subunits; 2 rings are composed of 7 alpha subunits and 2 rings are composed of 7 beta subunits. Proteasomes are distributed throughout eukaryotic cells at a high concentration and cleave peptides in an ATP/ubiquitin-dependent process in a non-lysosomal pathway. An essential function of a modified proteasome, the immunoproteasome, is the processing of class I MHC peptides. This gene encodes a member of the peptidase T1A family, that is a 20S core alpha subunit. A pseudogene has been identified on the Y chromosome. [provided by RefSeq]



[View online »](#)

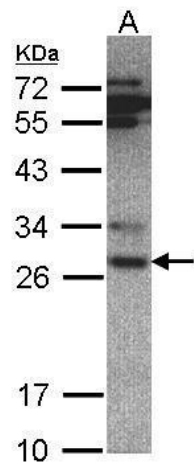
Synonyms: IOTA; p27K; PROS27

Note: Seq homology of immunogen across species: Rat (100%), Sheep (100%), Rhesus Monkey (100%), Chimpanzee (100%), Bovine (100%)

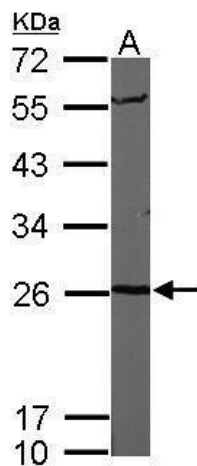
Protein Families: Druggable Genome, Protease, Stem cell - Pluripotency

Protein Pathways: Proteasome

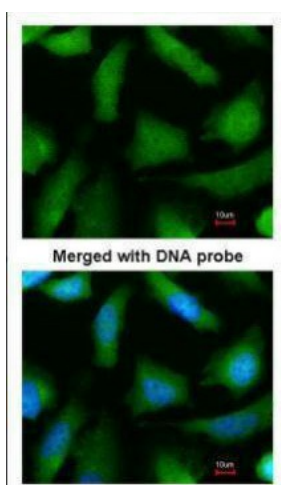
Product images:



Sample (30 ug whole cell lysate). A: Hep G2. 7.5% SDS PAGE. TA308942 diluted at 1:500



Sample (50 ug of whole cell lysate). A: Mouse brain. 12% SDS PAGE. TA308942 diluted at 1:1000.



Immunofluorescence analysis of paraformaldehyde-fixed HeLa, using 20S Proteasome alpha 6 (TA308942) antibody at 1:200 dilution.