

Product datasheet for **TA308941**

PRPSAP1 Rabbit Polyclonal Antibody

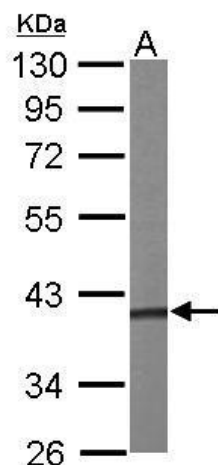
Product data:

Product Type:	Primary Antibodies
Applications:	IHC, WB
Recommended Dilution:	IHC:1:100-1:1000; WB:1:500-1:3000
Reactivity:	Human, Mouse (Predicted: Rhesus Monkey)
Host:	Rabbit
Isotype:	IgG
Clonality:	Polyclonal
Immunogen:	Recombinant fragment corresponding to a region within amino acids 1 and 356 of PRPSAP1 (Uniprot ID#Q14558)
Formulation:	0.1M Tris, 0.1M Glycine, 10% Glycerol (pH7). 0.01% Thimerosal was added as a preservative.
Concentration:	lot specific
Purification:	Purified by antigen-affinity chromatography.
Conjugation:	Unconjugated
Storage:	Store at -20°C as received.
Stability:	Stable for 12 months from date of receipt.
Predicted Protein Size:	39 kDa
Gene Name:	phosphoribosyl pyrophosphate synthetase-associated protein 1
Database Link:	NP_002757 Entrez Gene 67763 Mouse Entrez Gene 5635 Human Q14558
Synonyms:	PAP39
Note:	Seq homology of immunogen across species: Rhesus Monkey (100%)

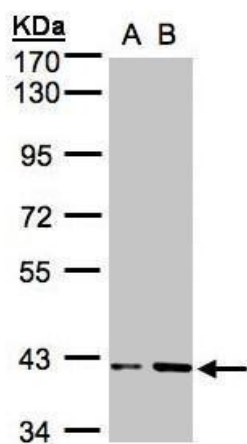


[View online »](#)

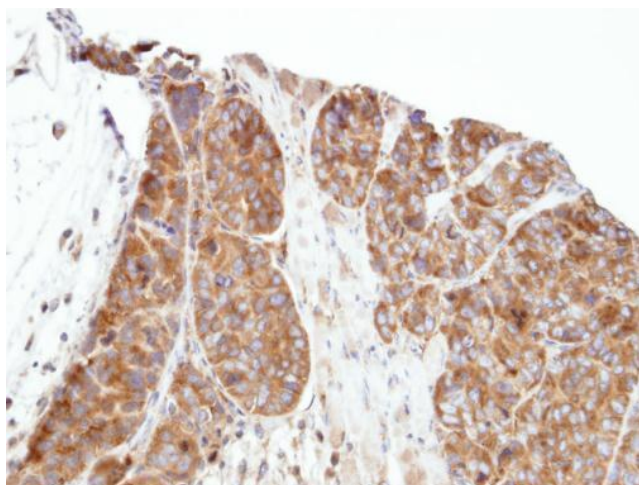
Product images:



Sample (50 ug of whole cell lysate). A: mouse liver. 10% SDS PAGE. TA308941 diluted at 1:1000.



Sample (30ug whole cell lysate). A:HeLa S3. B:Hep G2. 10% SDS PAGE. TA308941 diluted at 1:1000



Immunohistochemical analysis of paraffin-embedded SW480 xenograft, using PRPSAP1 (TA308941) antibody at 1:500 dilution.