

Product datasheet for **TA308939**

Protein C (PROC) Rabbit Polyclonal Antibody

Product data:

Product Type:	Primary Antibodies
Applications:	WB
Recommended Dilution:	WB:1:500-1:3000
Reactivity:	Human (Predicted: Dog)
Host:	Rabbit
Isotype:	IgG
Clonality:	Polyclonal
Immunogen:	Recombinant fragment corresponding to a region within amino acids 145 and 461 of Protein C (Uniprot ID#P04070)
Formulation:	0.1M Tris, 0.1M Glycine, 10% Glycerol (pH7). 0.01% Thimerosal was added as a preservative.
Concentration:	lot specific
Purification:	Purified by antigen-affinity chromatography.
Conjugation:	Unconjugated
Storage:	Store at -20°C as received.
Stability:	Stable for 12 months from date of receipt.
Predicted Protein Size:	52 kDa
Gene Name:	protein C, inactivator of coagulation factors Va and VIIIa
Database Link:	NP_000303 Entrez Gene 476104 Dog Entrez Gene 5624 Human P04070
Background:	The PROC gene encodes protein C (EC 3.4.21.69), a vitamin K-dependent plasma glycoprotein that is a key component of the anticoagulant system. Protein C is cleaved to its activated form, 'activated protein C' (APC) on endothelial cells by the thrombin-thrombomodulin complex (MIM 176930; MIM 188040) and then acts as a serine protease to degrade the activated forms of coagulation factors V (F5; MIM 612309) and VIII (F8; see MIM 306700). Protein S (PROS1; MIM 176880), also a vitamin K-dependent plasma protein, functions as a cofactor to activated protein C. [supplied by OMIM]
Synonyms:	APC; PC; PROC1; THPH3; THPH4



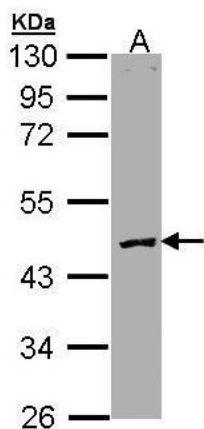
[View online »](#)

Note: Seq homology of immunogen across species: Dog (82%)

Protein Families: Druggable Genome, Protease

Protein Pathways: Complement and coagulation cascades

Product images:



Sample (30 ug of whole cell lysate). A: Molt-4.
10% SDS PAGE. TA308939 diluted at 1:3000