

## Product datasheet for **TA308937**

### PP1C gamma (PPP1CC) Rabbit Polyclonal Antibody

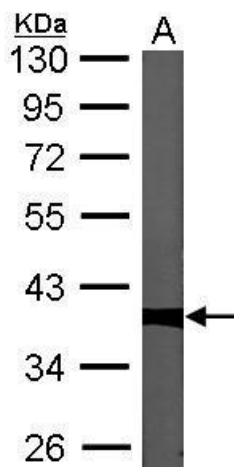
#### Product data:

Product Type:	Primary Antibodies
Applications:	IF, IHC, WB
Recommended Dilution:	ICC/IF:1:100-1:1000; IHC:1:100-1:1000; WB:1:500-1:3000
Reactivity:	Human, Mouse (Predicted: Rat, Xenopus, Chicken, Bovine, Rhesus Monkey, X. tropicalis)
Host:	Rabbit
Isotype:	IgG
Clonality:	Polyclonal
Immunogen:	Recombinant fragment corresponding to a region within amino acids 2 and 227 of PP1C gamma (Uniprot ID#P36873)
Formulation:	1XPBS, 20% Glycerol (pH7). 0.025% ProClin 300 was added as a preservative.
Concentration:	lot specific
Purification:	Purified by antigen-affinity chromatography.
Conjugation:	Unconjugated
Storage:	Store at -20°C as received.
Stability:	Stable for 12 months from date of receipt.
Predicted Protein Size:	37 kDa
Gene Name:	protein phosphatase 1 catalytic subunit gamma
Database Link:	<a href="#">NP_002701</a> <a href="#">Entrez Gene 19047 Mouse</a> <a href="#">Entrez Gene 24669 Rat</a> <a href="#">Entrez Gene 5501 Human</a> <a href="#">P36873</a>
Synonyms:	PP-1G; PP1C; PPP1G
Note:	Seq homology of immunogen across species: Rat (100%), Xenopus laevis (100%), Xenopus Tropicalis (100%), Chicken (100%), Rhesus Monkey (100%), Bovine (100%)
Protein Families:	Druggable Genome, Phosphatase
Protein Pathways:	Focal adhesion, Insulin signaling pathway, Long-term potentiation, Oocyte meiosis, Regulation of actin cytoskeleton, Vascular smooth muscle contraction

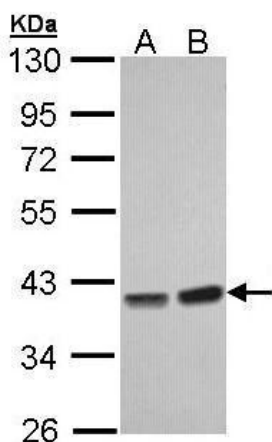


[View online »](#)

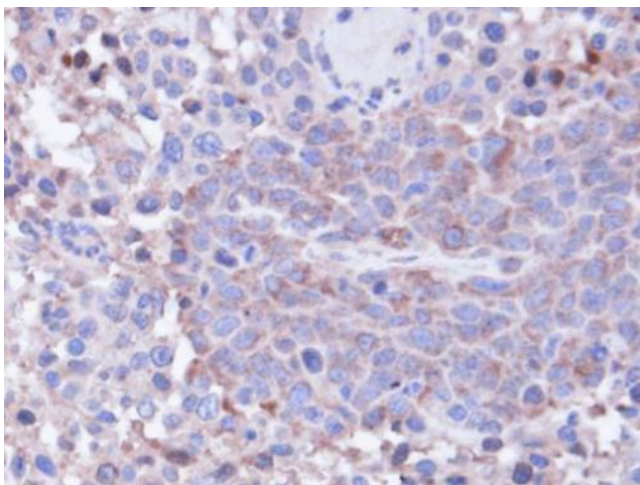
Product images:



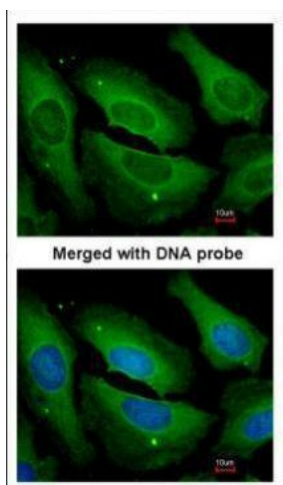
Sample (30 ug of whole cell lysate). A: NIH-3T3  
10% SDS PAGE. TA308937 diluted at 1:1000.



Sample (30 ug of whole cell lysate). A: Hep G2. B:  
Molt-4. 10% SDS PAGE. TA308937 diluted at  
1:1000



Immunohistochemical analysis of paraffin-embedded SAS xenograft, using PPP1CC (TA308937) antibody at 1:100 dilution.



Immunofluorescence analysis of paraformaldehyde-fixed HeLa, using PP1 gamma (TA308937) antibody at 1:200 dilution.