

## Product datasheet for **TA308934**

### PF4V1 Rabbit Polyclonal Antibody

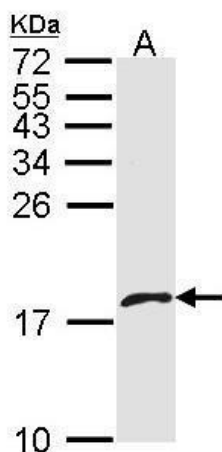
#### Product data:

Product Type:	Primary Antibodies
Applications:	IF, IHC, WB
Recommended Dilution:	ICC/IF:1:100-1:1000; IHC:1:100-1:1000; WB:1:500-1:3000
Reactivity:	Human
Host:	Rabbit
Isotype:	IgG
Clonality:	Polyclonal
Immunogen:	Synthetic peptide corresponding to a region within amino acids 40 and 104 of PF4V1 (Uniprot ID#P10720)
Formulation:	0.1M Tris, 0.1M Glycine, 10% Glycerol (pH7). 0.01% Thimerosal was added as a preservative.
Concentration:	lot specific
Purification:	Purified by antigen-affinity chromatography.
Conjugation:	Unconjugated
Storage:	Store at -20°C as received.
Stability:	Stable for 12 months from date of receipt.
Predicted Protein Size:	12 kDa
Gene Name:	platelet factor 4 variant 1
Database Link:	<a href="#">NP_002611</a> <a href="#">Entrez Gene 5197 Human P10720</a>
Synonyms:	CXCL4L1; CXCL4V1; PF4-ALT; PF4A; SCYB4V1
Protein Families:	Secreted Protein
Protein Pathways:	Chemokine signaling pathway, Cytokine-cytokine receptor interaction

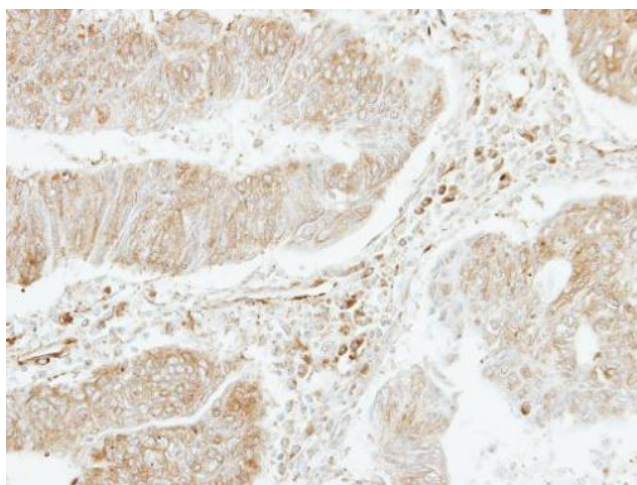


[View online »](#)

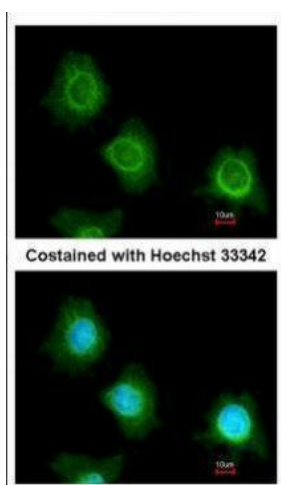
## Product images:



Sample (30 ug of whole cell lysate). A: A431. 15% SDS PAGE. TA308934 diluted at 1:1000.



Immunohistochemical analysis of paraffin-embedded Colon ca, using PF4V1 (TA308934) antibody at 1:250 dilution.



Immunofluorescence analysis of methanol-fixed HeLa, using PF4V1 (TA308934) antibody at 1:200 dilution.