

## Product datasheet for **TA308932**

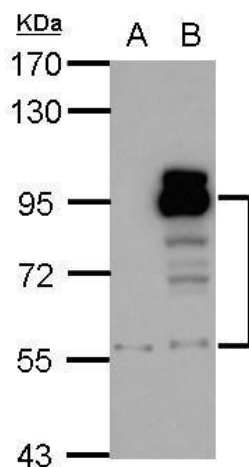
### PDE4D Rabbit Polyclonal Antibody

#### Product data:

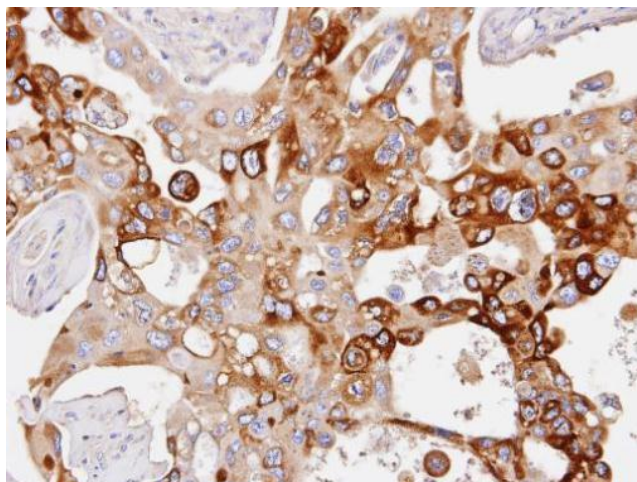
Product Type:	Primary Antibodies
Applications:	IF, IHC, WB
Recommended Dilution:	ICC/IF:1:100-1:1000; IHC:1:100-1:1000; WB:1:500-1:3000
Reactivity:	Human
Host:	Rabbit
Isotype:	IgG
Clonality:	Polyclonal
Immunogen:	Synthetic peptide corresponding to a region within amino acids 746 and 809 of PDE4D (Uniprot ID#Q08499)
Formulation:	0.1M Tris, 0.1M Glycine, 10% Glycerol (pH7). 0.01% Thimerosal was added as a preservative.
Concentration:	lot specific
Purification:	Purified by antigen-affinity chromatography.
Conjugation:	Unconjugated
Storage:	Store at -20°C as received.
Stability:	Stable for 12 months from date of receipt.
Predicted Protein Size:	76 kDa
Gene Name:	phosphodiesterase 4D
Database Link:	<a href="#">NP_001098101</a> <a href="#">Entrez Gene 5144 Human Q08499</a>
Background:	The PDE4D gene is complex and has at least 9 different isoforms that encode functional proteins. These proteins degrade the second messenger cAMP, which is a key signal transduction molecule in multiple cell types, including vascular cells (Dominiczak and McBride, 2003 [PubMed 14517535]). [supplied by OMIM]
Synonyms:	ACRDYS2; DPDE3; HSPDE4D; PDE4DN2; PDE43; STRK1
Protein Families:	Druggable Genome
Protein Pathways:	Progesterone-mediated oocyte maturation, Purine metabolism



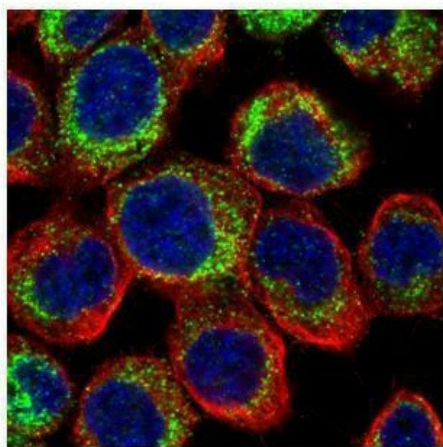
[View online »](#)

**Product images:**

Sample (30 ug of whole cell lysate). A: A431. B: HeLa. 7.5% SDS PAGE. TA308932 diluted at 1:1000.



Immunohistochemical analysis of paraffin-embedded H441 xenograft, using PDE4D (TA308932) antibody at 1:100 dilution.



Confocal immunofluorescence analysis (Olympus FV10i) of paraformaldehyde-fixed A431, using PDE4D (TA308932) antibody (Green) at 1:500 dilution. Alpha-tubulin filaments were labeled with anti-alpha tubulin antibody (Red) at 1:500.