

Product datasheet for **TA308931**

PDE4 (PDE4B) Rabbit Polyclonal Antibody

Product data:

Product Type:	Primary Antibodies
Applications:	WB
Recommended Dilution:	WB:1:500-1:3000
Reactivity:	Human (Predicted: Rhesus Monkey)
Host:	Rabbit
Isotype:	IgG
Clonality:	Polyclonal
Immunogen:	Recombinant fragment corresponding to a region within amino acids 489 and 736 of PDE4B (Uniprot ID#Q07343)
Formulation:	1XPBS, 10% Glycerol (pH7). 0.01% Thimerosal was added as a preservative.
Concentration:	lot specific
Purification:	Purified by antigen-affinity chromatography.
Conjugation:	Unconjugated
Storage:	Store at -20°C as received.
Stability:	Stable for 12 months from date of receipt.
Predicted Protein Size:	83 kDa
Gene Name:	phosphodiesterase 4B
Database Link:	NP_001032418 Entrez Gene 5142 Human Q07343



[View online »](#)

Background: This gene is a member of the type IV, cyclic AMP (cAMP)-specific, cyclic nucleotide phosphodiesterase (PDE) family. Cyclic nucleotides are important second messengers that regulate and mediate a number of cellular responses to extracellular signals, such as hormones, light, and neurotransmitters. The cyclic nucleotide phosphodiesterases (PDEs) regulate the cellular concentrations of cyclic nucleotides and thereby play a role in signal transduction. This gene encodes a protein that specifically hydrolyzes cAMP. Altered activity of this protein has been associated with schizophrenia and bipolar affective disorder. Alternate transcriptional splice variants, encoding different isoforms, have been characterized. [provided by RefSeq]

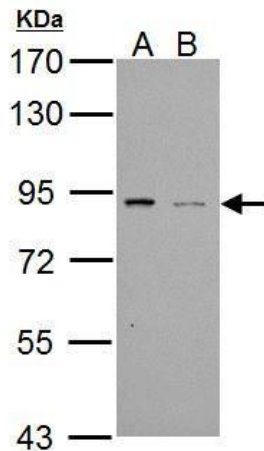
Synonyms: DPDE4; PDE4B5; PDEIVB

Note: Seq homology of immunogen across species: Rhesus Monkey (100%)

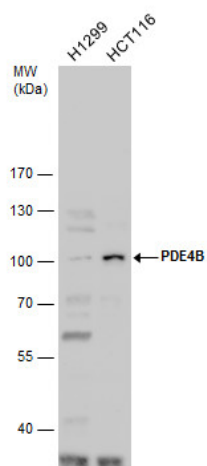
Protein Families: Druggable Genome

Protein Pathways: Progesterone-mediated oocyte maturation, Purine metabolism

Product images:



Sample (30 ug of whole cell lysate)∆. A: NT2D1.
B:∆ PC-3. 7.5% SDS PAGE∆. TA308931 diluted at 1:1000. ∆



PDE4B antibody detects PDE4B protein by western blot analysis. Whole cell extracts (30 ug) was separated by 7.5% SDS-PAGE, and the membrane was blotted with PDE4B antibody (TA308931) diluted by 1:1000.