

Product datasheet for **TA308930**

PDCL Rabbit Polyclonal Antibody

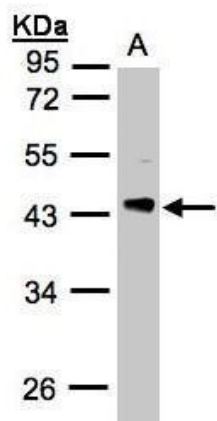
Product data:

Product Type:	Primary Antibodies
Applications:	IF, IHC, WB
Recommended Dilution:	ICC/IF:1:100-1:1000; IHC:1:100-1:1000; WB:1:500-1:3000
Reactivity:	Human, Mouse
Host:	Rabbit
Isotype:	IgG
Clonality:	Polyclonal
Immunogen:	Recombinant fragment corresponding to a region within amino acids 1 and 244 of PHLP (Uniprot ID#Q13371)
Formulation:	0.1M Tris, 0.1M Glycine, 10% Glycerol (pH7). 0.01% Thimerosal was added as a preservative.
Concentration:	lot specific
Purification:	Purified by antigen-affinity chromatography.
Conjugation:	Unconjugated
Storage:	Store at -20°C as received.
Stability:	Stable for 12 months from date of receipt.
Predicted Protein Size:	34 kDa
Gene Name:	phosducin like
Database Link:	NP_005379 Entrez Gene 67466 Mouse Entrez Gene 5082 Human Q13371
Background:	Phosducin-like protein is a putative modulator of heterotrimeric G proteins. The protein shares extensive amino acid sequence homology with phosducin, a phosphoprotein expressed in retina and pineal gland. Both phosducin-like protein and phosphoducin have been shown to regulate G-protein signaling by binding to the beta-gamma subunits of G proteins. [provided by RefSeq]
Synonyms:	PhLP
Protein Families:	Druggable Genome

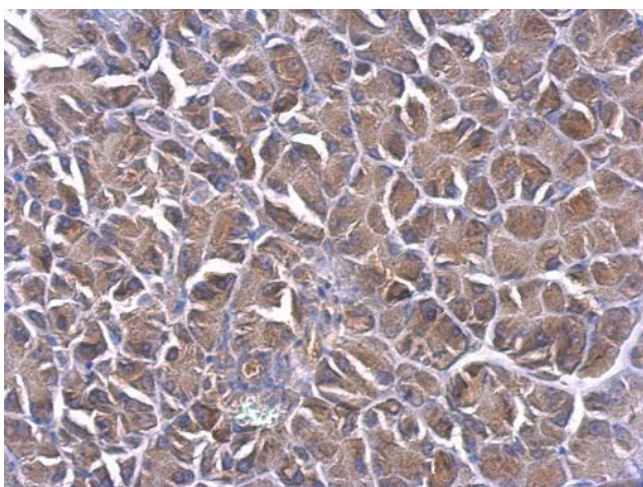


[View online »](#)

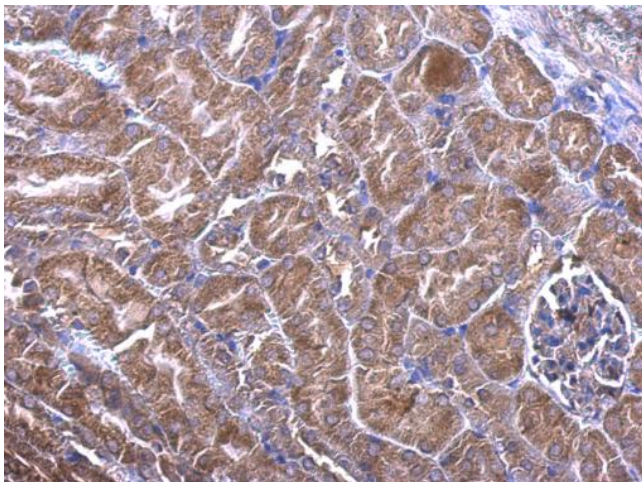
Product images:



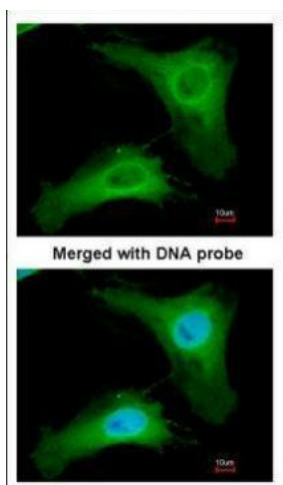
Sample (30 ug whole cell lysate). A:H1299. 10% SDS PAGE. TA308930 diluted at 1:3000



PHLP antibody detects PHLP protein at cytoplasm on mouse pancreas by immunohistochemical analysis. Sample: Paraffin-embedded mouse pancreas. PHLP antibody (TA308930) dilution: 1:500.



PHLP antibody detects PHLP protein at cytoplasm on mouse kidney by immunohistochemical analysis. Sample: Paraffin-embedded mouse kidney. PHLP antibody (TA308930) dilution: 1:500.



Immunofluorescence analysis of paraformaldehyde-fixed HeLa, using PHLP (TA308930) antibody at 1:200 dilution.