

Product datasheet for **TA308928**

IKB alpha (NFKBIA) Rabbit Polyclonal Antibody

Product data:

Product Type:	Primary Antibodies
Applications:	IF, IHC, WB
Recommended Dilution:	ICC/IF:1:100-1:1000; IHC:1:100-1:1000; WB:1:1000-1:10000
Reactivity:	Human (Predicted: Rhesus Monkey)
Host:	Rabbit
Isotype:	IgG
Clonality:	Polyclonal
Immunogen:	Recombinant fragment corresponding to a region within amino acids 1 and 317 of IKB alpha (Uniprot ID#P25963)
Formulation:	1XPBS, 1% BSA, 20% Glycerol (pH7). 0.025% ProClin 300 was added as a preservative.
Concentration:	lot specific
Purification:	Purified by antigen-affinity chromatography.
Conjugation:	Unconjugated
Storage:	Store at -20°C as received.
Stability:	Stable for 12 months from date of receipt.
Predicted Protein Size:	36 kDa
Gene Name:	NFKB inhibitor alpha
Database Link:	NP_065390 Entrez Gene 4792 Human P25963



[View online »](#)

Background:

NFKB1 (MIM 164011) or NFKB2 (MIM 164012) is bound to REL (MIM 164910), RELA (MIM 164014), or RELB (MIM 604758) to form the NFKB complex. The NFKB complex is inhibited by I-kappa-B proteins (NFKBIA or NFKBIB, MIM 604495), which inactivate NF-kappa-B by trapping it in the cytoplasm. Phosphorylation of serine residues on the I-kappa-B proteins by kinases (IKBKA, MIM 600664, or IKBKB, MIM 603258) marks them for destruction via the ubiquitination pathway, thereby allowing activation of the NF-kappa-B complex. Activated NFKB complex translocates into the nucleus and binds DNA at kappa-B-binding motifs such as 5-prime GGGRNNYYCC 3-prime or 5-prime HGGARNYYCC 3-prime (where H is A, C, or T; R is an A or G purine; and Y is a C or T pyrimidine). [supplied by OMIM]

Synonyms:

IKBA; MAD-3; NFKBI

Note:

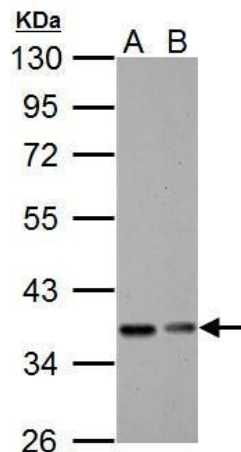
Seq homology of immunogen across species: Rhesus Monkey (100%)

Protein Families:

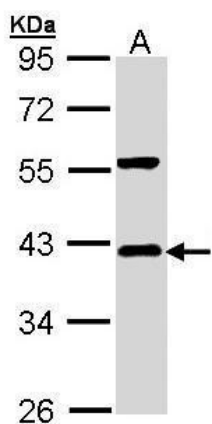
Druggable Genome

Protein Pathways:

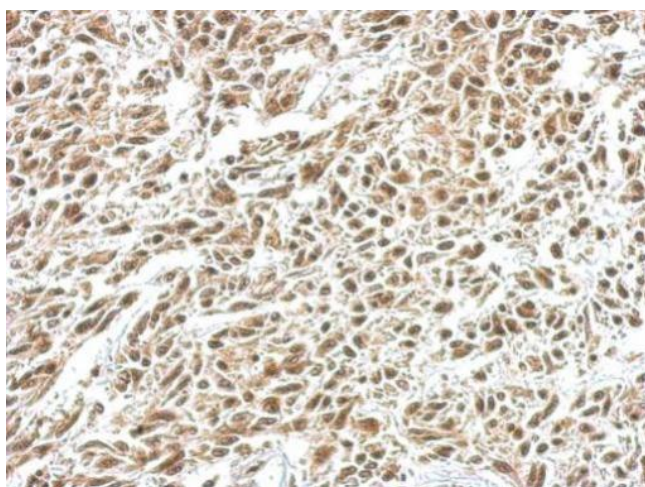
Adipocytokine signaling pathway, Apoptosis, B cell receptor signaling pathway, Chemokine signaling pathway, Chronic myeloid leukemia, Cytosolic DNA-sensing pathway, Epithelial cell signaling in Helicobacter pylori infection, Neurotrophin signaling pathway, NOD-like receptor signaling pathway, Pathways in cancer, Prostate cancer, RIG-I-like receptor signaling pathway, Small cell lung cancer, T cell receptor signaling pathway, Toll-like receptor signaling pathway

Product images:

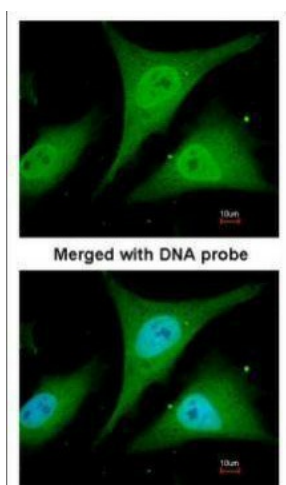
IKB alpha antibody detects IKB alpha protein by Western blot analysis. A. 30 ug BCL-1 whole cell lysate/extract. B. 30 ug C2C12 whole cell lysate/extrac. 10 % SDS-PAGE. IKB alpha antibody (TA308928) dilution: 1:5000



Sample (30 ug of whole cell lysate). A: Hep G2. 10% SDS PAGE. TA308928 diluted at 1:1000.



IKB alpha antibody detects NFKBIA protein at nucleus on U251 xenograft by immunohistochemical analysis. Sample: Paraffin-embedded U251 xenograft. IKB alpha antibody (TA308928) dilution: 1:500.



Immunofluorescence analysis of paraformaldehyde-fixed HeLa, using IkbppaB-alpha (TA308928) antibody at 1:200 dilution.