

Product datasheet for **TA308927**

NDUFB9 Rabbit Polyclonal Antibody

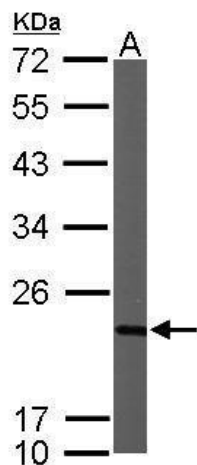
Product data:

Product Type:	Primary Antibodies
Applications:	IHC, WB
Recommended Dilution:	IHC:1:100-1:1000; WB:1:500-1:3000
Reactivity:	Human, Mouse
Host:	Rabbit
Isotype:	IgG
Clonality:	Polyclonal
Immunogen:	Recombinant protein fragment contain a sequence corresponding to a region within amino acids 1 and 162 of NDUFB9
Formulation:	0.1M Tris, 0.1M Glycine, 10% Glycerol (pH7). 0.01% Thimerosal was added as a preservative.
Concentration:	lot specific
Purification:	Purified by antigen-affinity chromatography.
Conjugation:	Unconjugated
Storage:	Store at -20°C as received.
Stability:	Stable for 12 months from date of receipt.
Predicted Protein Size:	22 kDa
Gene Name:	NADH:ubiquinone oxidoreductase subunit B9
Database Link:	NP_004996 Entrez Gene 66218 Mouse Entrez Gene 4715 Human Q9Y6M9
Synonyms:	B22; CI-B22; LYRM3; UQOR22
Protein Pathways:	Alzheimer's disease, Huntington's disease, Metabolic pathways, Oxidative phosphorylation, Parkinson's disease

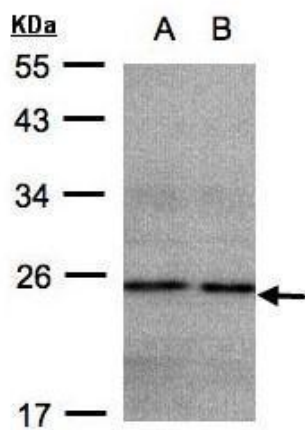


[View online »](#)

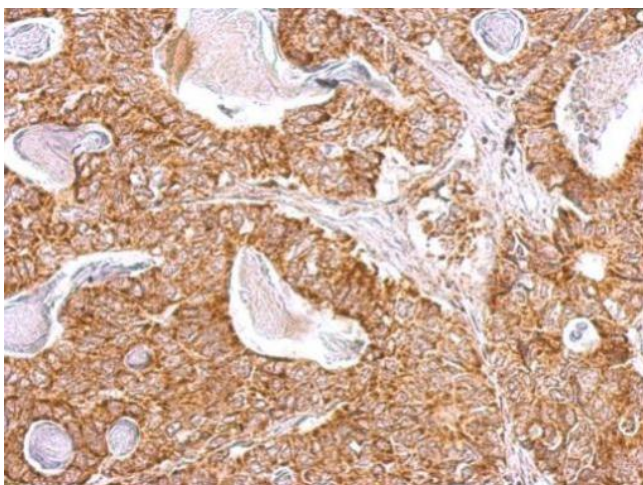
Product images:



Sample (50 ug of whole cell lysate). A: Mouse brain. 12% SDS PAGE. TA308927 diluted at 1:1000.



Sample (30 ug whole cell lysate). A: HeLa S3. B: Hep G2. 12% SDS PAGE. TA308927 diluted at 1:500



NDUFB9 antibody detects NDUFB9 protein at cytosol on gastric carcinoma by immunohistochemical analysis. Sample: Paraffin-embedded gastric carcinoma. NDUFB9 antibody (TA308927) dilution: 1:500.