

Product datasheet for **TA308925**

MMP2 Rabbit Polyclonal Antibody

Product data:

Product Type:	Primary Antibodies
Applications:	IF, IHC, WB
Recommended Dilution:	ICC/IF:1:100-1:1000; IHC:1:100-1:1000; WB:1:500-1:3000
Reactivity:	Human, Mouse (Predicted: Xenopus, Bovine)
Host:	Rabbit
Isotype:	IgG
Clonality:	Polyclonal
Immunogen:	Recombinant fragment corresponding to a region within amino acids 193 and 575 of MMP2 (Uniprot ID#P08253)
Formulation:	1XPBS, 1% BSA, 20% Glycerol (pH7). 0.025% ProClin 300 was added as a preservative.
Concentration:	lot specific
Purification:	Purified by antigen-affinity chromatography.
Conjugation:	Unconjugated
Storage:	Store at -20°C as received.
Stability:	Stable for 12 months from date of receipt.
Predicted Protein Size:	74 kDa
Gene Name:	matrix metalloproteinase 2
Database Link:	NP_001121363 Entrez Gene 17390 Mouse Entrez Gene 4313 Human P08253



[View online »](#)

Background:

Proteins of the matrix metalloproteinase (MMP) family are involved in the breakdown of extracellular matrix in normal physiological processes, such as embryonic development, reproduction, and tissue remodeling, as well as in disease processes, such as arthritis and metastasis. Most MMP's are secreted as inactive proproteins which are activated when cleaved by extracellular proteinases. This gene encodes an enzyme which degrades type IV collagen, the major structural component of basement membranes. The enzyme plays a role in endometrial menstrual breakdown, regulation of vascularization and the inflammatory response. Mutations in this gene have been associated with Winchester syndrome and Nodulosis-Arthropathy-Osteolysis (NAO) syndrome. Two transcript variants encoding different isoforms have been found for this gene. [provided by RefSeq]

Synonyms:

CLG4; CLG4A; MMP-2; MMP-II; MONA; TBE-1

Note:

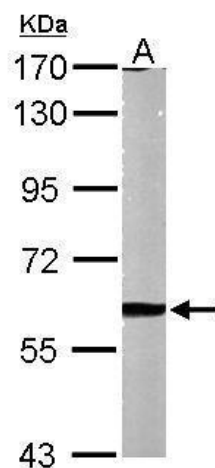
Seq homology of immunogen across species: *Xenopus laevis* (81%), Bovine (94%)

Protein Families:

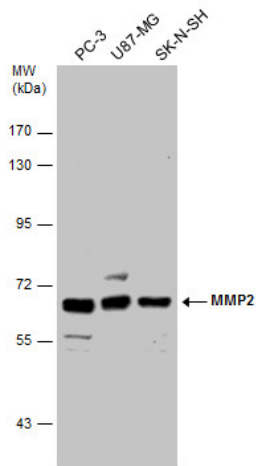
Druggable Genome, Protease

Protein Pathways:

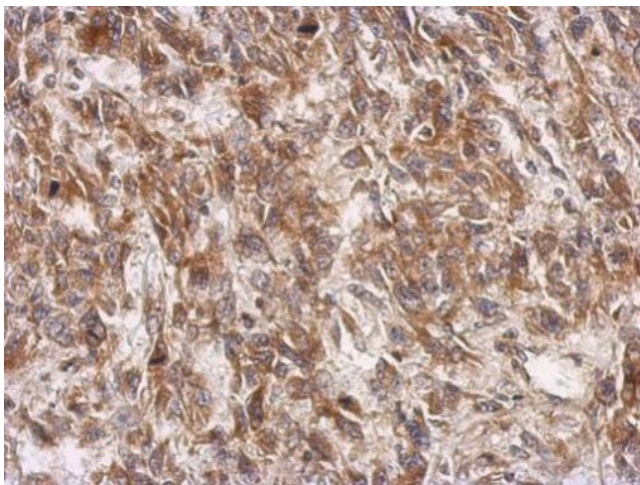
Bladder cancer, GnRH signaling pathway, Leukocyte transendothelial migration, Pathways in cancer

Product images:

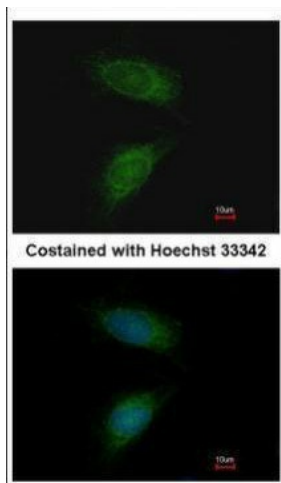
Sample (50 ug of whole cell lysate). A: Mouse brain. 7.5% SDS PAGE. TA308925 diluted at 1:1000.



MMP2 antibody detects MMP2 protein by western blot analysis. Various whole cell extracts (30 ug) were separated by 7.5% SDS-PAGE, and the membrane was blotted with MMP2 antibody (TA308925) diluted by 1:3000.



Immunohistochemical analysis of paraffin-embedded U251 xenograft, using MMP2 (TA308925) antibody at 1:500 dilution.



Immunofluorescence analysis of methanol-fixed HeLa, using MMP2 (TA308925) antibody at 1:200 dilution.