

Product datasheet for **TA308924**

Tau (MAPT) Rabbit Polyclonal Antibody

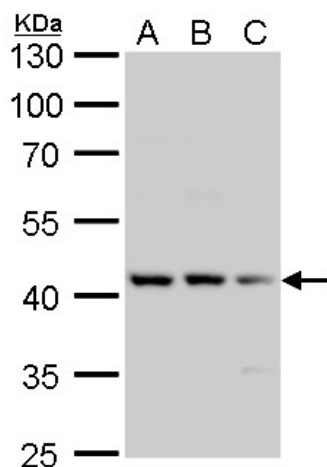
Product data:

Product Type:	Primary Antibodies
Applications:	WB
Recommended Dilution:	WB:1:500-1:3000
Reactivity:	Human (Predicted: Dog, Chimpanzee)
Host:	Rabbit
Isotype:	IgG
Clonality:	Polyclonal
Immunogen:	Synthetic peptide corresponding to a region within amino acids 171 and 266 of Tau (Uniprot ID#P10636)
Formulation:	0.1M Tris, 0.1M Glycine, 10% Glycerol (pH7). 0.01% Thimerosal was added as a preservative.
Concentration:	lot specific
Purification:	Purified by antigen-affinity chromatography.
Conjugation:	Unconjugated
Storage:	Store at -20°C as received.
Stability:	Stable for 12 months from date of receipt.
Predicted Protein Size:	79 kDa
Gene Name:	microtubule associated protein tau
Database Link:	NP_058519 Entrez Gene 480488 Dog Entrez Gene 4137 Human P10636
Synonyms:	DDPAC; FTDP-17; MAPTL; MSTD; MTBT1; MTBT2; PPND; PPP1R103; TAU
Note:	Seq homology of immunogen across species: Dog (94%), Chimpanzee (94%)
Protein Families:	Druggable Genome
Protein Pathways:	Alzheimer's disease, MAPK signaling pathway



[View online »](#)

Product images:



Tau antibody detects Tau protein by Western blot analysis. A. 30 ug U87-MG whole cell lysate/extract. B. 30 ug SK-N-SH whole cell lysate/extract. C. 30 ug IMR32 whole cell lysate/extract. D. 30 ug SK-N-AS whole cell lysate/extract. 10 % SDS-PAGE. Tau anti