

Product datasheet for **TA308923**

MAD2 (MAD2L1) Rabbit Polyclonal Antibody

Product data:

Product Type:	Primary Antibodies
Applications:	IF, IHC, WB
Recommended Dilution:	ICC/IF:1:100-1:1000; IHC:1:100-1:1000; WB:1:500-1:3000
Reactivity:	Human (Predicted: Bovine, Rhesus Monkey, Mouse)
Host:	Rabbit
Isotype:	IgG
Clonality:	Polyclonal
Immunogen:	Synthetic peptide corresponding to a region within amino acids 142 and 205 of MAD2L1 (Uniprot ID#Q13257)
Formulation:	1XPBS, 40% Glycerol (pH7). 0.01% Thimerosal was added as a preservative.
Concentration:	lot specific
Purification:	Purified by antigen-affinity chromatography.
Conjugation:	Unconjugated
Storage:	Store at -20°C as received.
Stability:	Stable for 12 months from date of receipt.
Predicted Protein Size:	24 kDa
Gene Name:	MAD2 mitotic arrest deficient-like 1 (yeast)
Database Link:	NP_002349 Entrez Gene 56150 Mouse Entrez Gene 4085 Human Q13257
Background:	MAD2L1 is a component of the mitotic spindle assembly checkpoint that prevents the onset of anaphase until all chromosomes are properly aligned at the metaphase plate. MAD2L1 is related to the MAD2L2 gene located on chromosome 1. A MAD2 pseudogene has been mapped to chromosome 14. [provided by RefSeq]
Synonyms:	HSMAD2; MAD2
Note:	Seq homology of immunogen across species: Mouse (92%), Rhesus Monkey (100%), Bovine (100%)

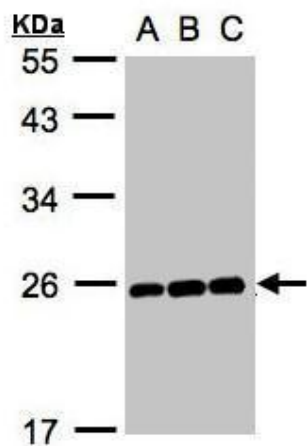


[View online »](#)

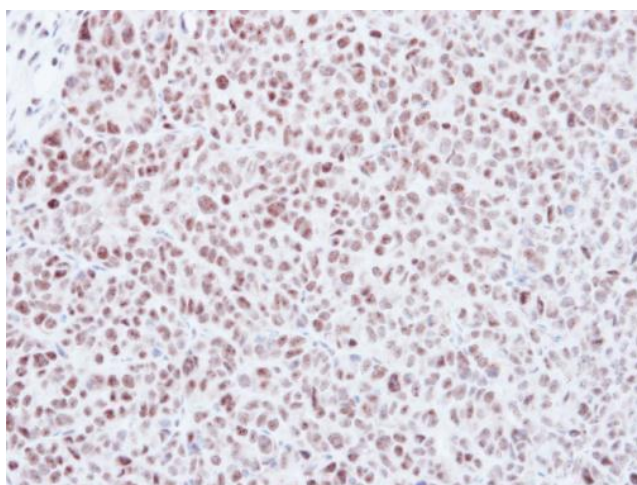
Protein Families: Druggable Genome

Protein Pathways: Cell cycle, Oocyte meiosis, Progesterone-mediated oocyte maturation

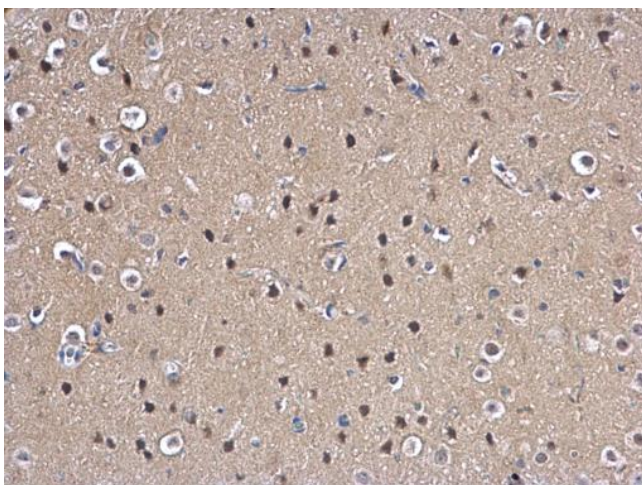
Product images:



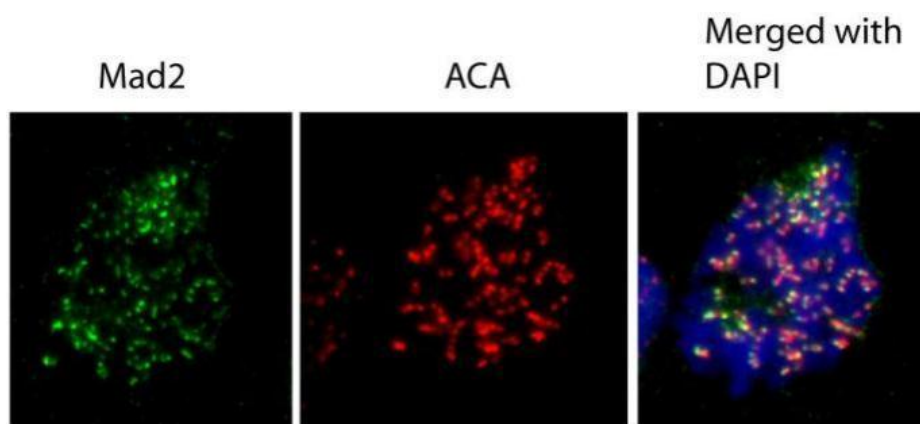
Sample (30ug whole cell lysate). A:Hep G2. B:MOLT4. C:Raji. 12% SDS PAGE. TA308923 diluted at 1:1000



Immunohistochemical analysis of paraffin-embedded DLD-1 xenograft, using Mad2L1 (TA308923) antibody at 1:500 dilution.



MAD2L1 antibody [C2C3], C-term detects MAD2L1 protein at nucleus on rat fore brain by immunohistochemical analysis. Sample: Paraffin-embedded rat fore brain. MAD2L1 antibody [C2C3], C-term (TA308923) dilution: 1:500.



Immunofluorescence analysis of human osteosarcoma cell line U2OS, using MAD2L1 (TA308923) antibody at 1:1000 dilution.