

Product datasheet for **TA308922**

MAD2 (MAD2L1) Rabbit Polyclonal Antibody

Product data:

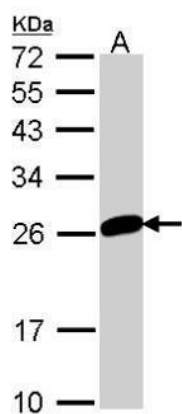
Product Type:	Primary Antibodies
Applications:	WB
Recommended Dilution:	WB:1:500-1:3000
Reactivity:	Human (Predicted: Rhesus Monkey)
Host:	Rabbit
Isotype:	IgG
Clonality:	Polyclonal
Immunogen:	Recombinant fragment corresponding to a region within amino acids 1 and 204 of MAD2L1 (Uniprot ID#Q13257)
Formulation:	0.1M Tris, 0.1M Glycine, 20% Glycerol (pH7). 0.01% Thimerosal was added as a preservative.
Concentration:	lot specific
Purification:	Purified by antigen-affinity chromatography.
Conjugation:	Unconjugated
Storage:	Store at -20°C as received.
Stability:	Stable for 12 months from date of receipt.
Predicted Protein Size:	24 kDa
Gene Name:	MAD2 mitotic arrest deficient-like 1 (yeast)
Database Link:	NP_002349 Entrez Gene 4085 Human Q13257
Background:	MAD2L1 is a component of the mitotic spindle assembly checkpoint that prevents the onset of anaphase until all chromosomes are properly aligned at the metaphase plate. MAD2L1 is related to the MAD2L2 gene located on chromosome 1. A MAD2 pseudogene has been mapped to chromosome 14. [provided by RefSeq]
Synonyms:	HSMAD2; MAD2
Note:	Seq homology of immunogen across species: Rhesus Monkey (100%)
Protein Families:	Druggable Genome



[View online »](#)

Protein Pathways: Cell cycle, Oocyte meiosis, Progesterone-mediated oocyte maturation

Product images:



Sample (30 ug of whole cell lysate). A: 293T. 12% SDS PAGE. TA308922 diluted at 1:1000.