

Product datasheet for **TA308921**

Lamin B1 (LMNB1) Rabbit Polyclonal Antibody

Product data:

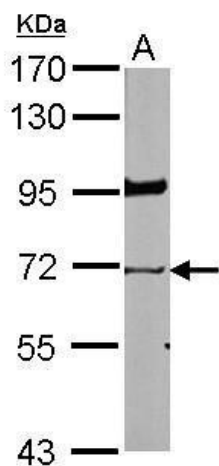
Product Type:	Primary Antibodies
Applications:	IHC, WB
Recommended Dilution:	IHC:1:100-1:1000; WB:1:1000-1:10000
Reactivity:	Human (Predicted: Bovine, Rhesus Monkey)
Host:	Rabbit
Isotype:	IgG
Clonality:	Polyclonal
Immunogen:	Recombinant fragment corresponding to a region within amino acids 289 and 574 of Lamin B1 (Uniprot ID#P20700)
Formulation:	1XPBS, 20% Glycerol (pH7). 0.025% ProClin 300 was added as a preservative.
Concentration:	lot specific
Purification:	Purified by antigen-affinity chromatography.
Conjugation:	Unconjugated
Storage:	Store at -20°C as received.
Stability:	Stable for 12 months from date of receipt.
Predicted Protein Size:	66 kDa
Gene Name:	lamin B1
Database Link:	NP_005564 Entrez Gene 4001 Human P20700
Background:	The nuclear lamina consists of a two-dimensional matrix of proteins located next to the inner nuclear membrane. The lamin family of proteins make up the matrix and are highly conserved in evolution. During mitosis, the lamina matrix is reversibly disassembled as the lamin proteins are phosphorylated. Lamin proteins are thought to be involved in nuclear stability, chromatin structure and gene expression. Vertebrate lamins consist of two types, A and B. This gene encodes one of the two B type proteins, B1. [provided by RefSeq]
Synonyms:	ADLD; LMN; LMN2; LMNB



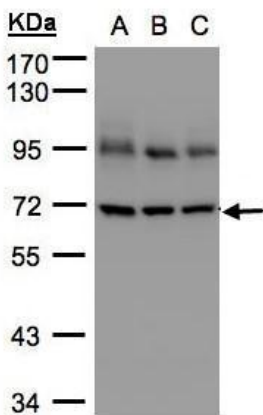
[View online »](#)

Note: Seq homology of immunogen across species: Rhesus Monkey (100%), Bovine (100%)

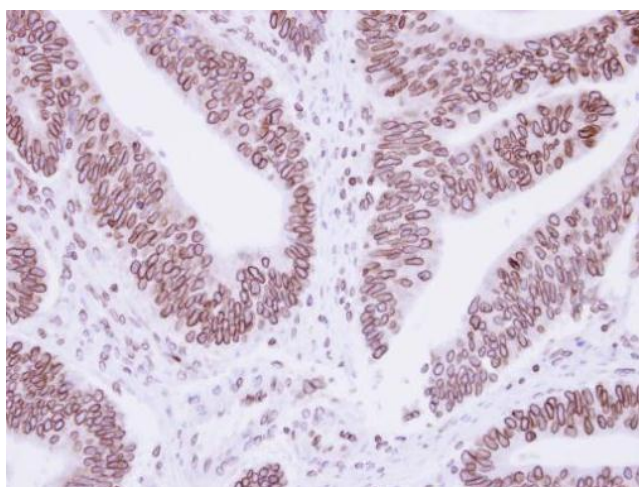
Product images:



Sample (30 ug of whole cell lysate). A: NIH-3T3. 7.5% SDS PAGE. TA308921 diluted at 1:5000.



Sample (30 ug whole cell lysate). A:A431. B:H1299. C:HeLa S3. 7.5% SDS PAGE. TA308921 diluted at 1:5000



Immunohistochemical analysis of paraffin-embedded Colon ca, using Lamin B1 antibody (TA308921) antibody at 1:250 dilution.