

Product datasheet for **TA308918**

LIM kinase 2 (LIMK2) Rabbit Polyclonal Antibody

Product data:

Product Type:	Primary Antibodies
Applications:	IF, IHC, WB
Recommended Dilution:	ICC/IF:1:100-1:1000; IHC:1:100-1:1000; WB:1:500-1:3000
Reactivity:	Human
Host:	Rabbit
Isotype:	IgG
Clonality:	Polyclonal
Immunogen:	Recombinant fragment contain a sequence corresponding to a region within amino acids 294 and 638 of LIM kinase 2
Formulation:	0.1M Tris, 0.1M Glycine, 10% Glycerol (pH7). 0.01% Thimerosal was added as a preservative.
Concentration:	lot specific
Purification:	Purified by antigen-affinity chromatography.
Conjugation:	Unconjugated
Storage:	Store at -20°C as received.
Stability:	Stable for 12 months from date of receipt.
Predicted Protein Size:	78 kDa
Gene Name:	LIM domain kinase 2
Database Link:	NP_001026971 Entrez Gene 3985 Human P53671



[View online »](#)

Background:

There are approximately 40 known eukaryotic LIM proteins, so named for the LIM domains they contain. LIM domains are highly conserved cysteine-rich structures containing 2 zinc fingers. Although zinc fingers usually function by binding to DNA or RNA, the LIM motif probably mediates protein-protein interactions. LIM kinase-1 and LIM kinase-2 belong to a small subfamily with a unique combination of 2 N-terminal LIM motifs and a C-terminal protein kinase domain. The protein encoded by this gene is phosphorylated and activated by ROCK, a downstream effector of Rho, and the encoded protein, in turn, phosphorylates cofilin, inhibiting its actin-depolymerizing activity. It is thought that this pathway contributes to Rho-induced reorganization of the actin cytoskeleton. At least three transcript variants encoding different isoforms have been found for this gene. [provided by RefSeq]

Synonyms:

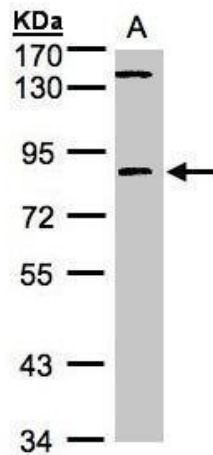
LIMK-2

Protein Families:

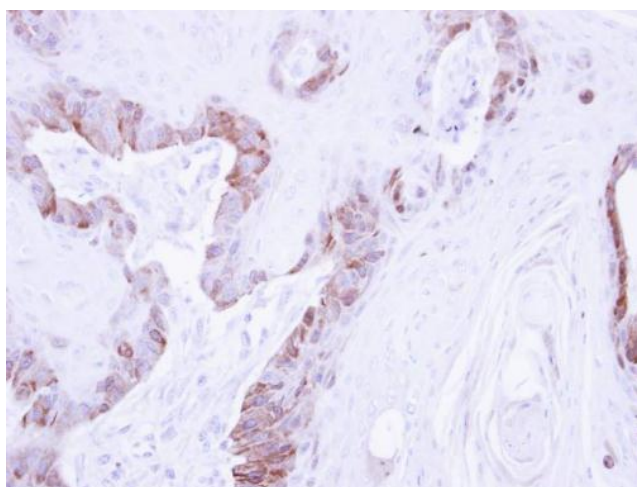
Druggable Genome, Protein Kinase

Protein Pathways:

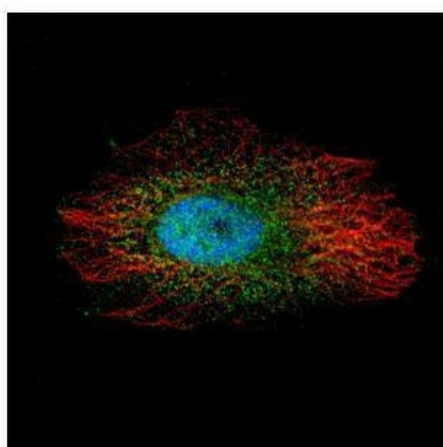
Axon guidance, Fc gamma R-mediated phagocytosis, Regulation of actin cytoskeleton

Product images:

Sample (30ug whole cell lysate). A:293T. 7.5% SDS PAGE. TA308918 diluted at 1:1000



Immunohistochemical analysis of paraffin-embedded CA922 xenograft, using LIM kinase 2 (TA308918) antibody at 1:500 dilution.



Confocal immunofluorescence analysis (Olympus FV10i) of paraformaldehyde-fixed HeLa, using LIM kinase 2 (TA308918) antibody (Green) at 1:500 dilution. Alpha-tubulin filaments were labeled with anti-alpha tubulin antibody (Red) at 1:2000.