

## Product datasheet for **TA308917**

### Laminin 5 (LAMB3) Rabbit Polyclonal Antibody

#### Product data:

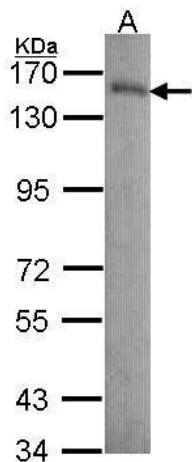
Product Type:	Primary Antibodies
Applications:	IF, IHC, WB
Recommended Dilution:	ICC/IF:1:100-1:1000; IHC:1:100-1:1000; WB:1:500-1:3000
Reactivity:	Human, Mouse
Host:	Rabbit
Isotype:	IgG
Clonality:	Polyclonal
Immunogen:	Recombinant fragment corresponding to a region within amino acids 644 and 960 of Laminin beta 3 (Uniprot ID#Q13751)
Formulation:	1XPBS, 1% BSA, 20% Glycerol (pH7). 0.025% ProClin 300 was added as a preservative.
Purification:	Purified by antigen-affinity chromatography.
Conjugation:	Unconjugated
Storage:	Store at -20°C as received.
Stability:	Stable for 12 months from date of receipt.
Predicted Protein Size:	130 kDa
Gene Name:	laminin subunit beta 3
Database Link:	<a href="#">NP_001121113</a> <a href="#">Entrez Gene 16780 Mouse</a> <a href="#">Entrez Gene 3914 Human</a> <a href="#">Q13751</a>
Background:	The product encoded by this gene is a laminin that belongs to a family of basement membrane proteins. This protein is a beta subunit laminin, which together with an alpha and a gamma subunit, forms laminin-5. Mutations in this gene cause epidermolysis bullosa junctional Herlitz type, and generalized atrophic benign epidermolysis bullosa, diseases that are characterized by blistering of the skin. Multiple alternatively spliced transcript variants that encode the same protein have been found for this gene. [provided by RefSeq]
Synonyms:	A11A; BM600-125KDA; LAM5; LAMNB1
Protein Families:	Druggable Genome, Secreted Protein



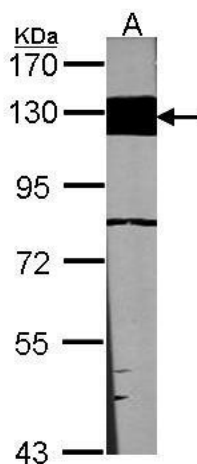
[View online »](#)

Protein Pathways: ECM-receptor interaction, Focal adhesion, Pathways in cancer, Small cell lung cancer

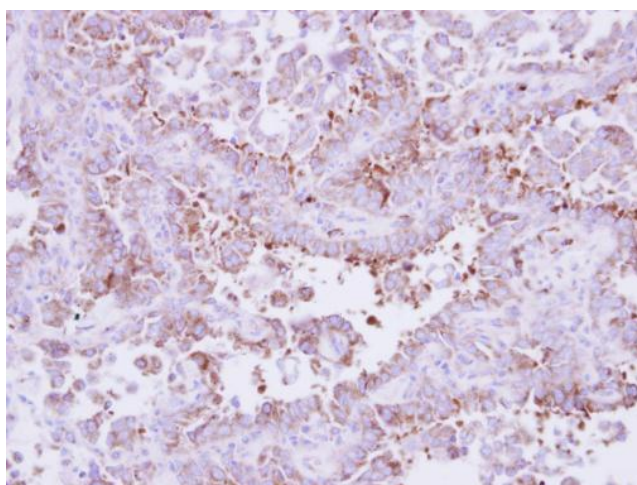
**Product images:**



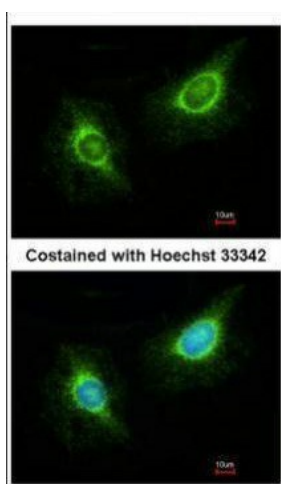
Sample (30 ug of whole cell lysate). A: A431. 7.5% SDS PAGE. Laminin beta-3 antibody. TA308917 diluted at 1:1000.



Sample (30 ug of whole cell lysate). A: NIH-3T3. 7.5% SDS PAGE. TA308917 diluted at 1:1000.



Immunohistochemical analysis of paraffin-embedded Lung ca, using Laminin beta 3 (TA308917) antibody at 1:250 dilution.



Immunofluorescence analysis of methanol-fixed HeLa, using Laminin beta 3 (TA308917) antibody at 1:200 dilution.