

## Product datasheet for **TA308916**

### **KRT31 Rabbit Polyclonal Antibody**

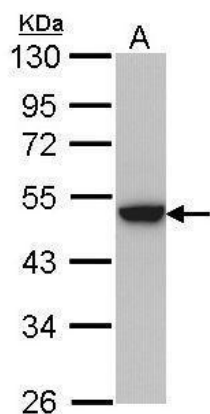
#### **Product data:**

<b>Product Type:</b>	Primary Antibodies
<b>Applications:</b>	WB
<b>Recommended Dilution:</b>	WB:1:500-1:3000
<b>Reactivity:</b>	Human (Predicted: Chimpanzee)
<b>Host:</b>	Rabbit
<b>Isotype:</b>	IgG
<b>Clonality:</b>	Polyclonal
<b>Immunogen:</b>	Recombinant fragment corresponding to a region within amino acids 1 and 261 of Cytokeratin 31 (Uniprot ID#Q15323)
<b>Formulation:</b>	0.1M Tris, 0.1M Glycine, 10% Glycerol (pH7). 0.01% Thimerosal was added as a preservative.
<b>Concentration:</b>	lot specific
<b>Purification:</b>	Purified by antigen-affinity chromatography.
<b>Conjugation:</b>	Unconjugated
<b>Storage:</b>	Store at -20°C as received.
<b>Stability:</b>	Stable for 12 months from date of receipt.
<b>Predicted Protein Size:</b>	47 kDa
<b>Gene Name:</b>	keratin 31
<b>Database Link:</b>	<a href="#">NP_002268</a> <a href="#">Entrez Gene 3881 Human Q15323</a>
<b>Background:</b>	The protein encoded by this gene is a member of the keratin gene family. As a type I hair keratin, it is an acidic protein which heterodimerizes with type II keratins to form hair and nails. The type I hair keratins are clustered in a region of chromosome 17q12-q21 and have the same direction of transcription. [provided by RefSeq]
<b>Synonyms:</b>	Ha-1; HA1; hHa1; KRTHA1
<b>Note:</b>	Seq homology of immunogen across species: Chimpanzee (100%)



[View online »](#)

## Product images:



Sample (30 ug of whole cell lysate). A: HeLa. 10% SDS PAGE. TA308916 diluted at 1:1000.