

## Product datasheet for **TA308915**

### Cytokeratin 10 (KRT10) Rabbit Polyclonal Antibody

#### Product data:

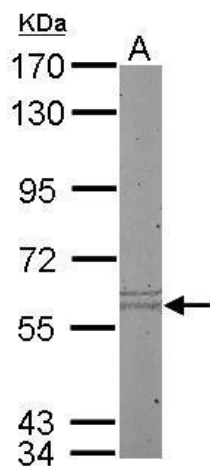
Product Type:	Primary Antibodies
Applications:	IHC, WB
Recommended Dilution:	IHC:1:100-1:1000; WB:1:500-1:3000
Reactivity:	Human, Mouse (Predicted: Cow, Dog, Rat)
Host:	Rabbit
Isotype:	IgG
Clonality:	Polyclonal
Immunogen:	Recombinant protein fragment contain a sequence corresponding to a region within amino acids 73 and 284 of Cytokeratin 10
Formulation:	0.1M Tris, 0.1M Glycine, 10% Glycerol (pH7). 0.01% Thimerosal was added as a preservative.
Concentration:	lot specific
Purification:	Purified by antigen-affinity chromatography.
Conjugation:	Unconjugated
Storage:	Store at -20°C as received.
Stability:	Stable for 12 months from date of receipt.
Predicted Protein Size:	59 kDa
Gene Name:	keratin 10
Database Link:	<a href="#">NP_000412</a> <a href="#">Entrez Gene 16661</a> <a href="#">MouseEntrez Gene 450225</a> <a href="#">RatEntrez Gene 491006</a> <a href="#">DogEntrez Gene 3858</a> <a href="#">Human</a> <a href="#">P13645</a>
Background:	This gene encodes a member of the type I (acidic) cytokeratin family, which belongs to the superfamily of intermediate filament (IF) proteins. Keratins are heteropolymeric structural proteins which form the intermediate filament. These filaments, along with actin microfilaments and microtubules, compose the cytoskeleton of epithelial cells. Mutations in this gene are associated with epidermolytic hyperkeratosis. This gene is located within a cluster of keratin family members on chromosome 17q21. [provided by RefSeq]
Synonyms:	BCIE; BIE; CK10; EHK; K10; KPP



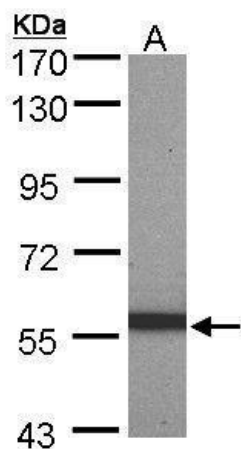
[View online »](#)

**Note:** Seq homology of immunogen across species: Cow (91%), Dog (97%), Rat (93%)

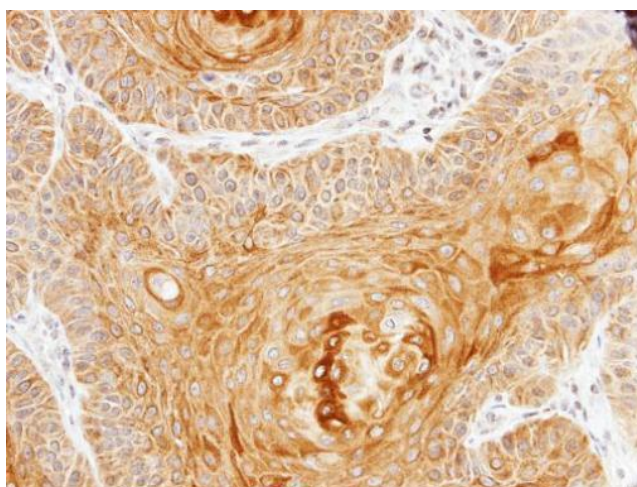
**Product images:**



Sample (50 ug of whole cell lysate). A: mouse liver. 7.5% SDS PAGE. TA308915 diluted at 1:500.



Sample (30 ug of whole cell lysate). A: A431. 7.5% SDS PAGE. TA308915 diluted at 1:3000



Immunohistochemical analysis of paraffin-embedded Cal27 xenograft, using Cytokeratin 10 (TA308915) antibody at 1:100 dilution.