

## Product datasheet for **TA308913**

### **KIF5B Rabbit Polyclonal Antibody**

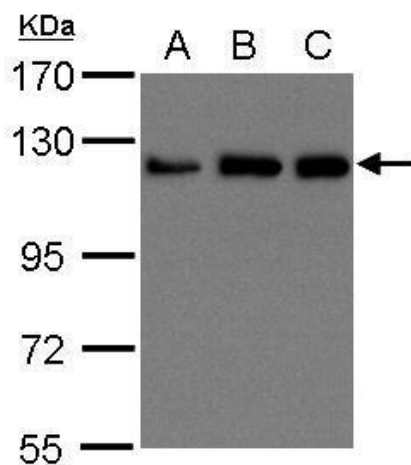
#### **Product data:**

<b>Product Type:</b>	Primary Antibodies
<b>Applications:</b>	IHC, WB
<b>Recommended Dilution:</b>	IHC:1:100-1:1000; WB:1:500-1:3000
<b>Reactivity:</b>	Human (Predicted: Mouse, Rat, Bovine, X. tropicalis)
<b>Host:</b>	Rabbit
<b>Isotype:</b>	IgG
<b>Clonality:</b>	Polyclonal
<b>Immunogen:</b>	Synthetic peptide corresponding to a region within amino acids 901 and 963 of UKHC (Uniprot ID#P33176)
<b>Formulation:</b>	1XPBS, 10% Glycerol (pH7). 0.01% Thimerosal was added as a preservative.
<b>Concentration:</b>	lot specific
<b>Purification:</b>	Purified by antigen-affinity chromatography.
<b>Conjugation:</b>	Unconjugated
<b>Storage:</b>	Store at -20°C as received.
<b>Stability:</b>	Stable for 12 months from date of receipt.
<b>Predicted Protein Size:</b>	110 kDa
<b>Gene Name:</b>	kinesin family member 5B
<b>Database Link:</b>	<a href="#">NP_004512</a> <a href="#">Entrez Gene 16573 MouseEntrez Gene 117550 RatEntrez Gene 3799 Human P33176</a>
<b>Synonyms:</b>	HEL-S-61; KINH; KNS; KNS1; UKHC
<b>Note:</b>	Seq homology of immunogen across species: Mouse (83%), Rat (83%), Xenopus Tropicalis (83%), Bovine (100%)
<b>Protein Families:</b>	Druggable Genome

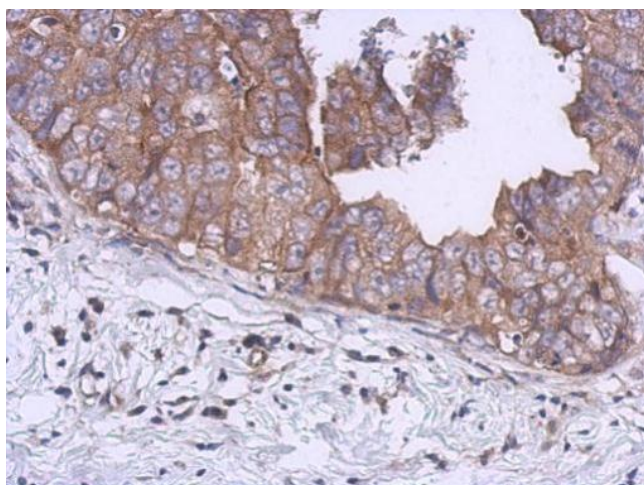


[View online »](#)

## Product images:



Sample (30 ug of whole cell lysate). A: 293T. B: A431. C: H1299. 15% SDS PAGE. TA308913 diluted at 1:1500.



Immunohistochemical analysis of paraffin-embedded Breast ca, using UKHC (TA308913) antibody at 1:500 dilution.