

Product datasheet for **TA308909**

Inhibin beta A (INHBA) Rabbit Polyclonal Antibody

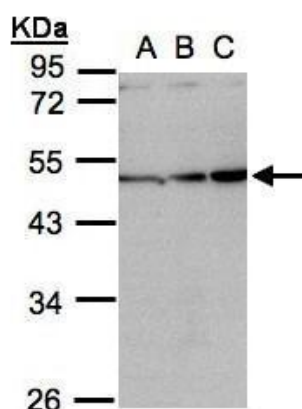
Product data:

Product Type:	Primary Antibodies
Applications:	IF, IHC, WB
Recommended Dilution:	ICC/IF:1:100-1:1000; IHC:1:100-1:1000; WB:1:500-1:3000
Reactivity:	Human (Predicted: Mouse, Rat, Feline, Pig, Chicken, Sheep, Bovine)
Host:	Rabbit
Isotype:	IgG
Clonality:	Polyclonal
Immunogen:	Synthetic peptide corresponding to a region within amino acids 362 and 426 of Inhibin beta A
Formulation:	0.1M Tris, 0.1M Glycine, 20% Glycerol (pH7). 0.01% Thimerosal was added as a preservative.
Purification:	Purified by antigen-affinity chromatography.
Conjugation:	Unconjugated
Storage:	Store at -20°C as received.
Stability:	Stable for 12 months from date of receipt.
Predicted Protein Size:	47 kDa
Gene Name:	inhibin beta A subunit
Database Link:	NP_002183 Entrez Gene 16323 Mouse Entrez Gene 29200 Rat Entrez Gene 3624 Human P08476

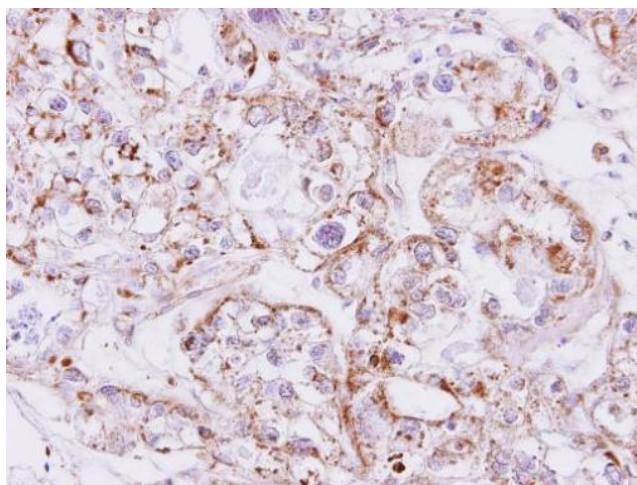


[View online »](#)

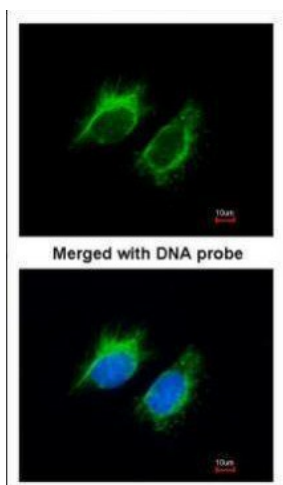
- Background:** The inhibin beta A subunit joins the alpha subunit to form a pituitary FSH secretion inhibitor. Inhibin has been shown to regulate gonadal stromal cell proliferation negatively and to have tumor-suppressor activity. In addition, serum levels of inhibin have been shown to reflect the size of granulosa-cell tumors and can therefore be used as a marker for primary as well as recurrent disease. Because expression in gonadal and various extragonadal tissues may vary severalfold in a tissue-specific fashion, it is proposed that inhibin may be both a growth/differentiation factor and a hormone. Furthermore, the beta A subunit forms a homodimer, activin A, and also joins with a beta B subunit to form a heterodimer, activin AB, both of which stimulate FSH secretion. Finally, it has been shown that the beta A subunit mRNA is identical to the erythroid differentiation factor subunit mRNA and that only one gene for this mRNA exists in the human genome. [provided by RefSeq]
- Synonyms:** EDF; FRP
- Note:** Seq homology of immunogen across species: Mouse (100%), Rat (100%), Cat (100%), Pig (100%), Chicken (100%), Sheep (100%), Bovine (100%)
- Protein Families:** Druggable Genome, Secreted Protein
- Protein Pathways:** Cytokine-cytokine receptor interaction, TGF-beta signaling pathway

Product images:

Sample (30 ug whole cell lysate). A:H1299. B:HeLa S3. C:Hep G2. 10% SDS PAGE. TA308909 diluted at 1:1000



Immunohistochemical analysis of paraffin-embedded CLEAR CELL OVCA xenograft, using Inhibin beta A (TA308909) antibody at 1:500 dilution.



Immunofluorescence analysis of paraformaldehyde-fixed HeLa, using Inhibin beta-A (TA308909) antibody at 1:200 dilution.