

Product datasheet for **TA308907**

Interferon alpha 2 (IFNA2) Rabbit Polyclonal Antibody

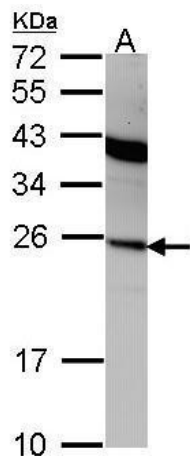
Product data:

Product Type:	Primary Antibodies
Applications:	IF, IHC, WB
Recommended Dilution:	ICC/IF:1:100-1:1000; IHC:1:100-1:1000; WB:1:500-1:3000
Reactivity:	Human (Predicted: Rhesus Monkey)
Host:	Rabbit
Isotype:	IgG
Clonality:	Polyclonal
Immunogen:	Synthetic peptide corresponding to a region within amino acids 125 and 188 of Interferon alpha 2 (Uniprot ID#P01563)
Formulation:	0.1M Tris, 0.1M Glycine, 10% Glycerol (pH7). 0.01% Thimerosal was added as a preservative.
Concentration:	lot specific
Purification:	Purified by antigen-affinity chromatography.
Conjugation:	Unconjugated
Storage:	Store at -20°C as received.
Stability:	Stable for 12 months from date of receipt.
Predicted Protein Size:	22 kDa
Gene Name:	interferon, alpha 2
Database Link:	NP_000596 Entrez Gene 3440 Human P01563
Synonyms:	IFN-alphaA; IFNA; IFNA2B; INFA2
Note:	Seq homology of immunogen across species: Rhesus Monkey (100%)
Protein Families:	Druggable Genome, Secreted Protein
Protein Pathways:	Antigen processing and presentation, Autoimmune thyroid disease, Cytokine-cytokine receptor interaction, Cytosolic DNA-sensing pathway, Jak-STAT signaling pathway, Natural killer cell mediated cytotoxicity, Regulation of autophagy, RIG-I-like receptor signaling pathway, Toll-like receptor signaling pathway

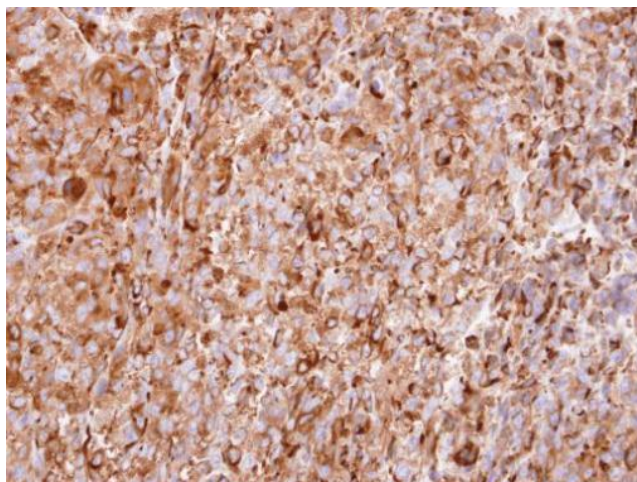


[View online »](#)

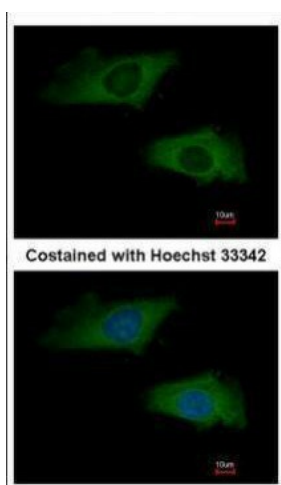
Product images:



Sample (30 ug of whole cell lysate). A: A431. 12% SDS PAGE. TA308907 diluted at 1:1000.



Immunohistochemical analysis of paraffin-embedded CL1-5 xenograft, using interferon alpha 2 (TA308907) antibody at 1:100 dilution.



Immunofluorescence analysis of methanol-fixed HeLa, using interferon alpha 2 (TA308907) antibody at 1:200 dilution.