

Product datasheet for **TA308906**

IGSF3 Rabbit Polyclonal Antibody

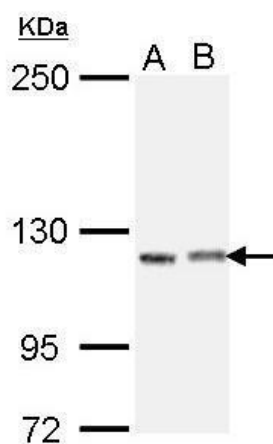
Product data:

Product Type:	Primary Antibodies
Applications:	WB
Recommended Dilution:	WB:1:500-1:3000
Reactivity:	Human (Predicted: Mouse, Rat)
Host:	Rabbit
Isotype:	IgG
Clonality:	Polyclonal
Immunogen:	Recombinant fragment corresponding to a region within amino acids 323 and 593 of IGSF3 (Uniprot ID#O75054)
Formulation:	0.1M Tris, 0.1M Glycine, 10% Glycerol (pH7). 0.01% Thimerosal was added as a preservative.
Concentration:	lot specific
Purification:	Purified by antigen-affinity chromatography.
Conjugation:	Unconjugated
Storage:	Store at -20°C as received.
Stability:	Stable for 12 months from date of receipt.
Predicted Protein Size:	135 kDa
Gene Name:	immunoglobulin superfamily member 3
Database Link:	NP_001533 Entrez Gene 78908 Mouse Entrez Gene 295325 Rat Entrez Gene 3321 Human O75054
Synonyms:	EWI-3; LCDD; V8
Note:	Seq homology of immunogen across species: Mouse (92%), Rat (92%)
Protein Families:	Transmembrane



[View online »](#)

Product images:



Sample (30 ug of whole cell lysate). A: H1299. B: Raji. 5% SDS PAGE. TA308906 diluted at 1:1000.