

Product datasheet for **TA308895**

H3.3B (H3F3B) Rabbit Polyclonal Antibody

Product data:

Product Type:	Primary Antibodies
Applications:	IF, IHC, WB
Recommended Dilution:	WB 1:500 - 1:3000, IHC 1:100 - 1:1000, IF 1:100 - 1:1000
Reactivity:	Human, Mouse, Rat
Host:	Rabbit
Isotype:	IgG
Clonality:	Polyclonal
Immunogen:	Recombinant protein fragment contain a sequence corresponding to a region within amino acids 1 and 86 of Histone H3.3B
Formulation:	1XPBS, 1% BSA, 20% Glycerol (pH7). 0.025% ProClin 300 was added as a preservative.
Concentration:	lot specific
Purification:	Purified by antigen-affinity chromatography.
Conjugation:	Unconjugated
Storage:	Store at -20°C as received.
Stability:	Stable for 12 months from date of receipt.
Predicted Protein Size:	15 kDa
Gene Name:	H3 histone, family 3B (H3.3B)
Database Link:	NP_005315 Entrez Gene 15081 MouseEntrez Gene 117056 RatEntrez Gene 3021 Human P84243
Background:	Histones are basic nuclear proteins that are responsible for the nucleosome structure of the chromosomal fiber in eukaryotes. Two molecules of each of the four core histones (H2A, H2B, H3, and H4) form an octamer, around which approximately 146 bp of DNA is wrapped in repeating units, called nucleosomes. The linker histone, H1, interacts with linker DNA between nucleosomes and functions in the compaction of chromatin into higher order structures. This gene contains introns and its mRNA is polyadenylated, unlike most histone genes. The protein encoded is a member of the histone H3 family. [provided by RefSeq]
Synonyms:	H3.3B

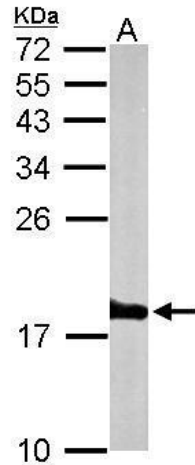


[View online »](#)

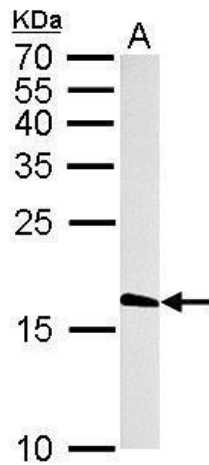
Note: Seq homology of immunogen across species: Xenopus laevis (100%), Xenopus Tropicalis (100%), Chicken (100%), Bovine (100%)

Protein Pathways: Systemic lupus erythematosus

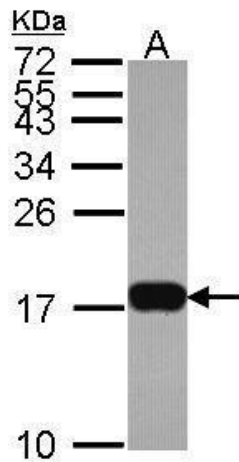
Product images:



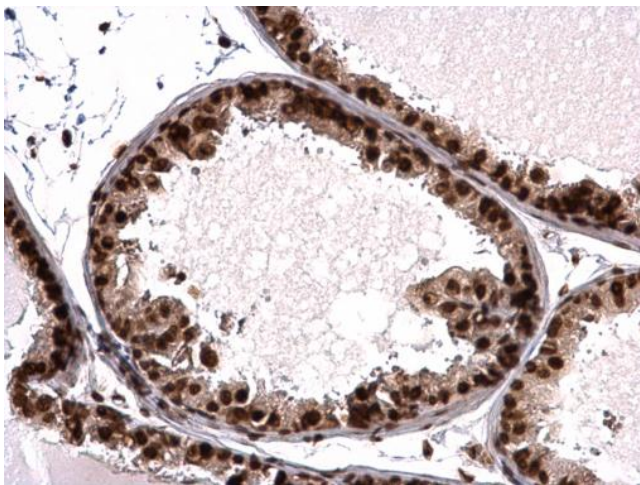
Sample (50 ug of whole cell lysate). A: mouse brain. 15% SDS PAGE. TA308895 diluted at 1:1000.



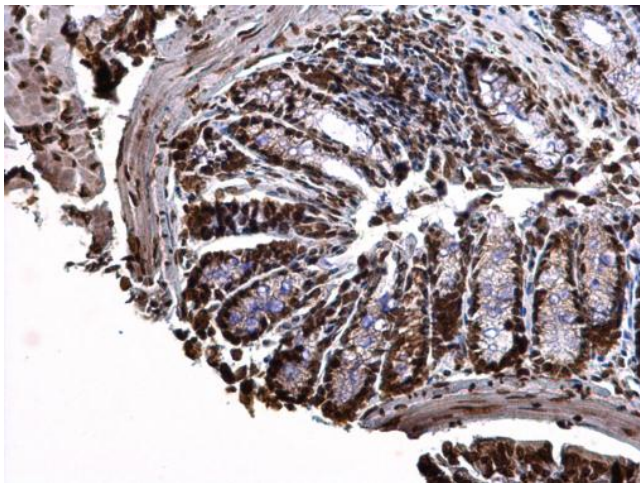
Histone H3.3B antibody detects H3F3B protein by Western blot analysis. A. 50 ug rat brain lysate/extract. 15 % SDS-PAGE. Histone H3.3B antibody (TA308895) dilution: 1:1000



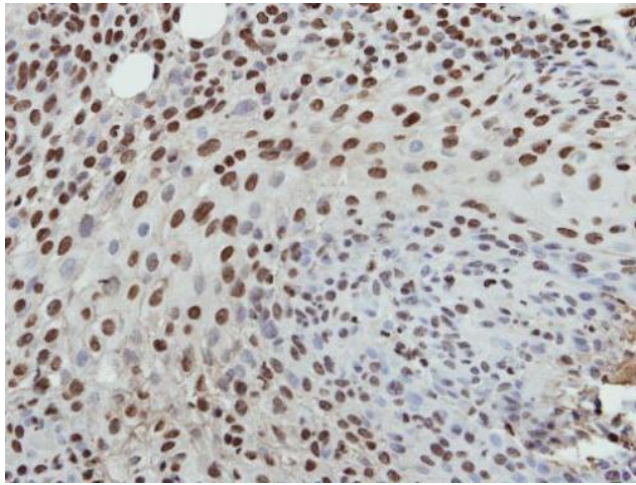
Sample (30 ug of whole cell lysate). A: HeLa. 15% SDS PAGE. TA308895 diluted at 1:1000.



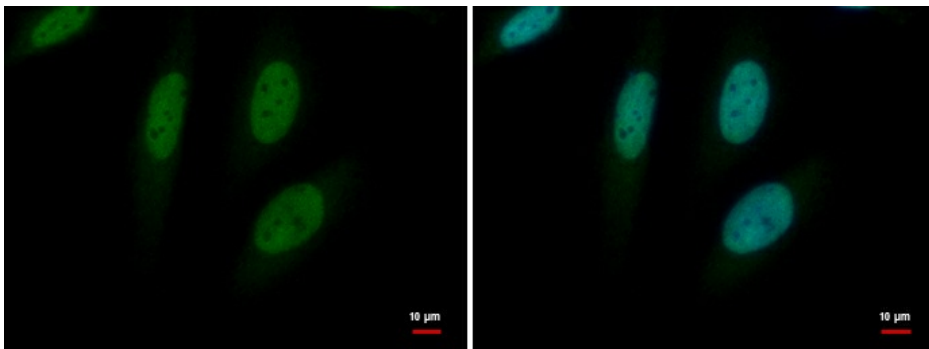
Histone H3.3B antibody detects Histone H3.3B protein at nucleus on mouse colon by immunohistochemical analysis. Sample: Paraffin-embedded mouse colon. Histone H3.3B antibody (TA308895) dilution: 1:500.



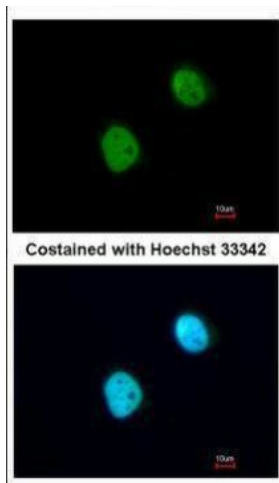
Histone H3.3B antibody detects Histone H3.3B protein at nucleus on mouse prostate by immunohistochemical analysis. Sample: Paraffin-embedded mouse prostate. Histone H3.3B antibody (TA308895) dilution: 1:500.



Immunohistochemical analysis of paraffin-embedded HSC3 xenograft, using Histone H3.3B (TA308895) antibody at 1:500 dilution.



Histone H3.3B antibody detects Histone H3.3B protein at nucleus by immunofluorescent analysis. Sample: HeLa cells were fixed in 4% paraformaldehyde at RT for 15 min. Green: Histone H3.3B protein stained by Histone H3.3B antibody (TA308895) diluted at 1:50



Immunofluorescence analysis of paraformaldehyde-fixed HeLa, using Histone H3.3B (TA308895) antibody at 1:200 dilution.