

Product datasheet for **TA308893**

H2A.Z (H2AFZ) Rabbit Polyclonal Antibody

Product data:

Product Type:	Primary Antibodies
Applications:	IF, IHC, IP, WB
Recommended Dilution:	ICC/IF:1:100-1:1000; IHC:1:100-1:1000; WB:1:500-1:3000
Reactivity:	Human (Predicted: Rat, Zebrafish, Xenopus, Pig, Chicken, Sheep, Bovine, Rhesus Monkey, X. tropicalis, Mouse)
Host:	Rabbit
Isotype:	IgG
Clonality:	Polyclonal
Immunogen:	Synthetic peptide contain a sequence corresponding to a region within amino acids 65 and 128 of Histone H2A.Z
Formulation:	0.1M Tris, 0.1M Glycine, 10% Glycerol (pH7). 0.01% Thimerosal was added as a preservative.
Concentration:	lot specific
Purification:	Purified by antigen-affinity chromatography.
Conjugation:	Unconjugated
Storage:	Store at -20°C as received.
Stability:	Stable for 12 months from date of receipt.
Predicted Protein Size:	14 kDa
Gene Name:	H2A histone family member Z
Database Link:	NP_002097 Entrez Gene 51788 Mouse Entrez Gene 58940 Rat Entrez Gene 3015 Human P0C0S5



[View online »](#)

Background:

Histones are basic nuclear proteins that are responsible for the nucleosome structure of the chromosomal fiber in eukaryotes. Nucleosomes consist of approximately 146 bp of DNA wrapped around a histone octamer composed of pairs of each of the four core histones (H2A, H2B, H3, and H4). The chromatin fiber is further compacted through the interaction of a linker histone, H1, with the DNA between the nucleosomes to form higher order chromatin structures. This gene encodes a replication-independent member of the histone H2A family that is distinct from other members of the family. Studies in mice have shown that this particular histone is required for embryonic development and indicate that lack of functional histone H2A leads to embryonic lethality. [provided by RefSeq]

Synonyms:

H2A; H2A.z; H2A.Z-1; H2AZ; z

Note:

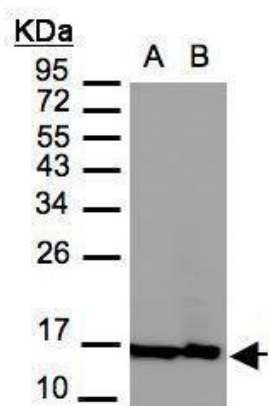
Seq homology of immunogen across species: Mouse (100%), Rat (100%), Zebrafish (93%), Xenopus laevis (100%), Xenopus Tropicalis (100%), Pig (100%), Chicken (100%), Sheep (100%), Rhesus Monkey (100%), Bovine (100%)

Protein Families:

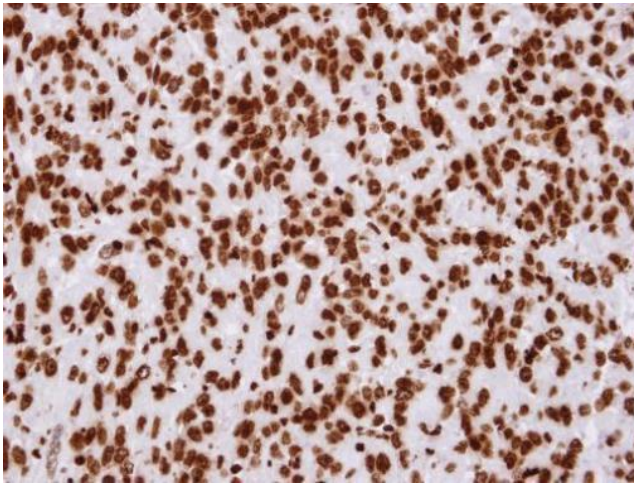
Druggable Genome

Protein Pathways:

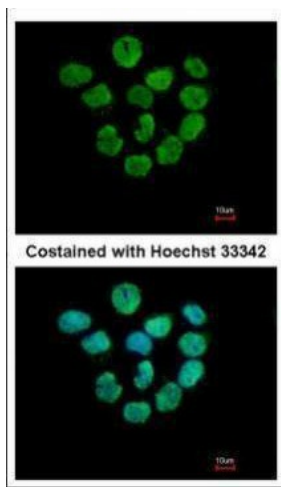
Systemic lupus erythematosus

Product images:

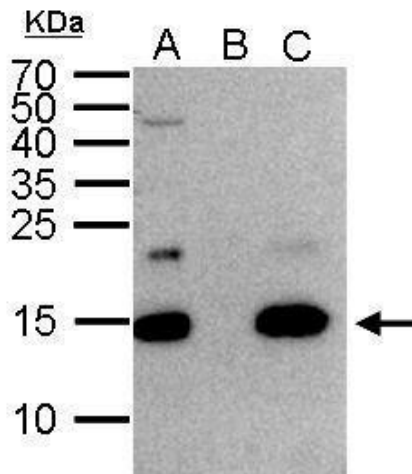
Sample (30 ug of whole cell lysate). A: MOLT4.
B: Raji. 12% SDS PAGE. TA308893 diluted at 1:3000



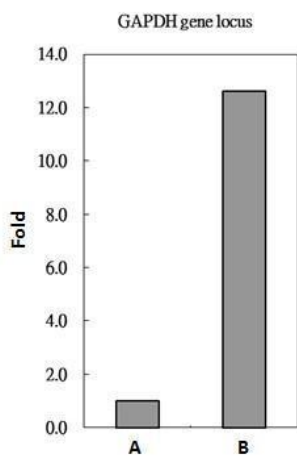
Immunohistochemical analysis of paraffin-embedded ES-2 xenograft, using Histone H2A.Z (TA308893) antibody at 1:100 dilution.



Immunofluorescence analysis of paraformaldehyde-fixed A431, using Histone H2A.Z (TA308893) antibody at 1:500 dilution.



Histone H2A.Z antibody immunoprecipitates Histone H2A.Z protein in IP experiments. IP Sample: 1000 ug HeLa whole cell lysate/extract A. 50 ug HeLa whole cell lysate/extract B. Control with 2 ug of preimmune rabbit IgG C. Immunoprecipitation of Histone H2A



Histone H2A.Z antibody immunoprecipitates Histone H2A.Z protein-DNA in ChIP experiments. ChIP Sample: HeLa whole cell lysate/extract A. 5 ug preimmune rabbit IgG B. 5 ug of Histone H2A.Z antibody (TA308893) The precipitated DNA was detected by PCR with pr