

Product datasheet for **TA308887**

GMDS Rabbit Polyclonal Antibody

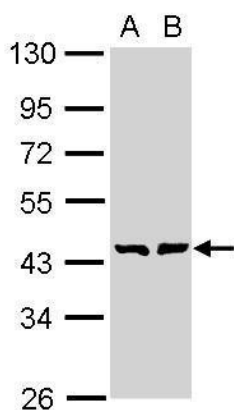
Product data:

Product Type:	Primary Antibodies
Applications:	IHC, WB
Recommended Dilution:	IHC:1:100-1:1000; WB:1:500-1:3000
Reactivity:	Human (Predicted: Rhesus Monkey)
Host:	Rabbit
Isotype:	IgG
Clonality:	Polyclonal
Immunogen:	Recombinant fragment corresponding to a region within amino acids 67 and 357 of GMDS (Uniprot ID#O60547)
Formulation:	0.1M Tris, 0.1M Glycine, 10% Glycerol (pH7). 0.01% Thimerosal was added as a preservative.
Concentration:	lot specific
Purification:	Purified by antigen-affinity chromatography.
Conjugation:	Unconjugated
Storage:	Store at -20°C as received.
Stability:	Stable for 12 months from date of receipt.
Predicted Protein Size:	42 kDa
Gene Name:	GDP-mannose 4,6-dehydratase
Database Link:	NP_001491 Entrez Gene 2762 Human O60547
Synonyms:	GMD; SDR3E1
Note:	Seq homology of immunogen across species: Rhesus Monkey (100%)
Protein Families:	Druggable Genome
Protein Pathways:	Amino sugar and nucleotide sugar metabolism, Fructose and mannose metabolism, Metabolic pathways

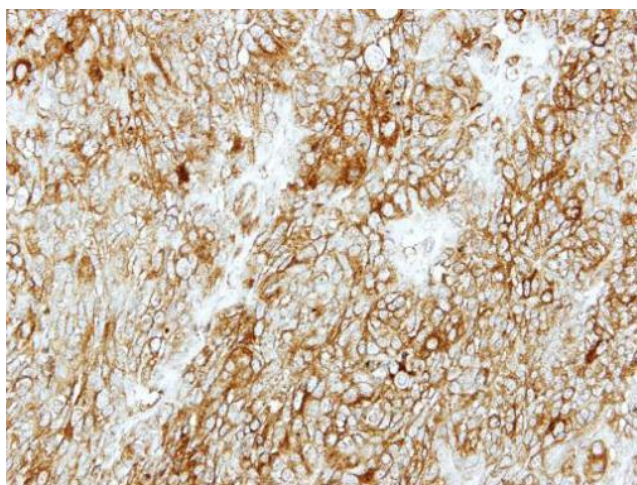


[View online »](#)

Product images:



Sample (30 ug of whole cell lysate). A: A431. B: H1299. 10% SDS PAGE. TA308887 diluted at 1:1000.



Immunohistochemical analysis of paraffin-embedded DLD1 xenograft, using GMDS (TA308887) antibody at 1:500 dilution.