

Product datasheet for **TA308886**

alpha 2 Glycine Receptor (GLRA2) Rabbit Polyclonal Antibody

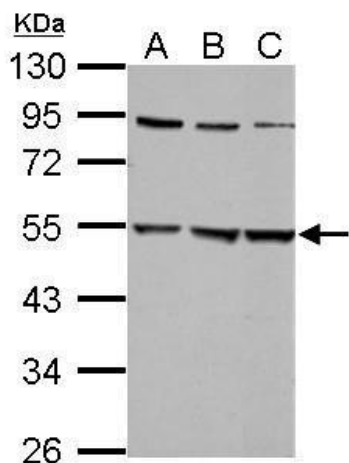
Product data:

Product Type:	Primary Antibodies
Applications:	IHC, WB
Recommended Dilution:	IHC:1:100-1:1000; WB:1:1000-1:10000
Reactivity:	Human (Predicted: Rhesus Monkey)
Host:	Rabbit
Isotype:	IgG
Clonality:	Polyclonal
Immunogen:	Recombinant fragment corresponding to a region within amino acids 1 and 216 of Glycine Receptor alpha 2 (Uniprot ID#P23416)
Formulation:	0.1M Tris, 0.1M Glycine, 10% Glycerol (pH7). 0.01% Thimerosal was added as a preservative.
Concentration:	lot specific
Purification:	Purified by antigen-affinity chromatography.
Conjugation:	Unconjugated
Storage:	Store at -20°C as received.
Stability:	Stable for 12 months from date of receipt.
Predicted Protein Size:	52 kDa
Gene Name:	glycine receptor alpha 2
Database Link:	NP_001112358 Entrez Gene 2742 Human P23416
Synonyms:	GLR
Note:	Seq homology of immunogen across species: Rhesus Monkey (100%)
Protein Families:	Druggable Genome, Ion Channels: Cys-loop Receptors, Transmembrane
Protein Pathways:	Neuroactive ligand-receptor interaction

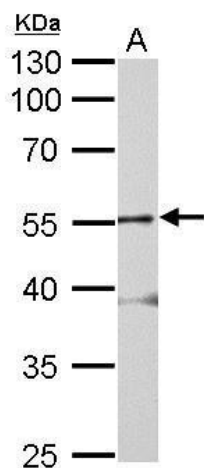


[View online »](#)

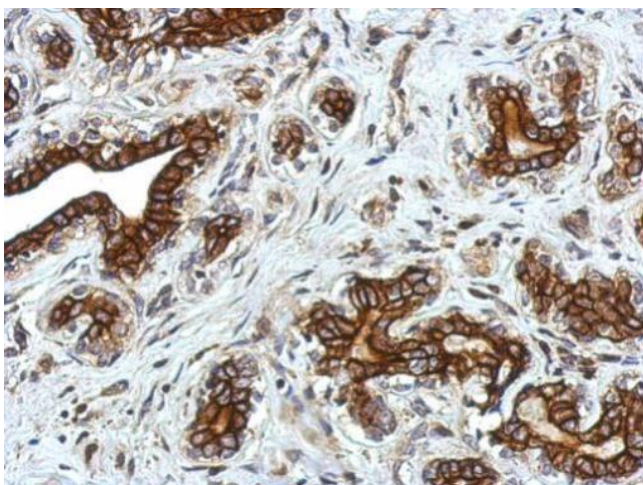
Product images:



Sample (30 ug of whole cell lysate). A: 293T. B: A431. C: HepG2. 10% SDS PAGE. TA308886 diluted at 1:5000.



Glycine Receptor alpha 2 antibody detects GLRA2 protein by Western blot analysis. A. 50 ug mouse brain lysate/extract. 10 % SDS-PAGE. Glycine Receptor alpha 2 antibody (TA308886) dilution: 1:2000



Immunohistochemical analysis of paraffin-embedded Breast ca, using Glycine Receptor alpha 2 (TA308886) antibody at 1:750 dilution.