

Product datasheet for **TA308885**

GLDC Rabbit Polyclonal Antibody

Product data:

Product Type:	Primary Antibodies
Applications:	IF, IHC, WB
Recommended Dilution:	ICC/IF:1:100-1:1000; IHC:1:100-1:1000; WB:1:500-1:3000
Reactivity:	Human (Predicted: Mouse, Chicken, Rat, Xenopus, Bovine)
Host:	Rabbit
Isotype:	IgG
Clonality:	Polyclonal
Immunogen:	Recombinant fragment corresponding to a region within amino acids 442 and 723 of Glycine dehydrogenase (Uniprot ID#P23378)
Formulation:	1XPBS, 1% BSA, 20% Glycerol (pH7). 0.025% ProClin 300 was added as a preservative.
Purification:	Purified by antigen-affinity chromatography.
Conjugation:	Unconjugated
Storage:	Store at -20°C as received.
Stability:	Stable for 12 months from date of receipt.
Predicted Protein Size:	113 kDa
Gene Name:	glycine decarboxylase
Database Link:	NP_000161 Entrez Gene 104174 Mouse Entrez Gene 309312 Rat Entrez Gene 2731 Human P23378
Background:	The enzyme system for cleavage of glycine (glycine cleavage system; GCS; EC 2.1.2.10), which is confined to the mitochondria, is composed of 4 protein components: P protein (a pyridoxal phosphate-dependent glycine decarboxylase), H protein (a lipoic acid-containing protein), T protein (a tetrahydrofolate-requiring enzyme), and L protein (a lipoamide dehydrogenase). Glycine encephalopathy (GCE; MIM 605899) may be due to a defect in any one of these enzymes; see MIM 238310, MIM 238330, and MIM 238331. [supplied by OMIM]
Synonyms:	GCE; GCSP; HYGN1
Note:	Seq homology of immunogen across species: Mouse (91%), Chicken (85%), Rat (84%), Xenopus laevis (86%), Bovine (92%)

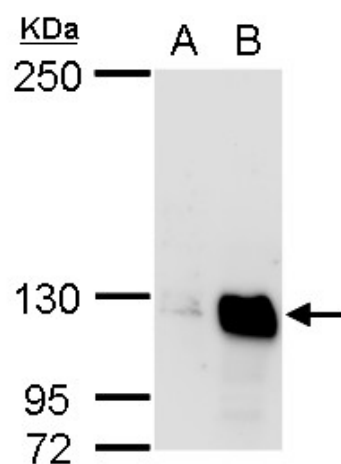


[View online »](#)

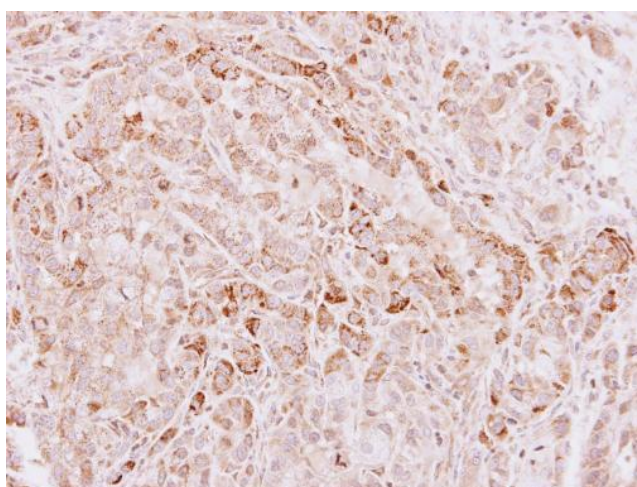
Protein Families: Druggable Genome

Protein Pathways: Glycine, serine and threonine metabolism, Metabolic pathways

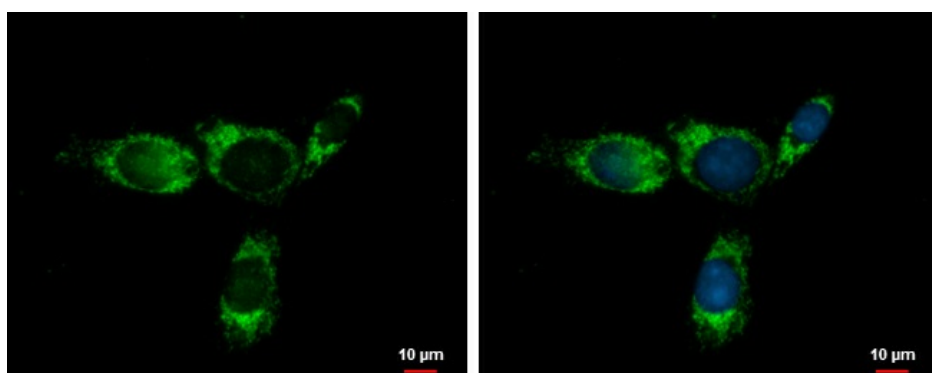
Product images:



Glycine dehydrogenase antibody detects Glycine dehydrogenase protein by western blot analysis. A. 30 ug HeLa whole cell lysate/extract. B. 30 ug HepG2 whole cell lysate/extract. 5 % SDS-PAGE. Glycine dehydrogenase antibody (TA308885) dilution: 1:500



Immunohistochemical analysis of paraffin-embedded A549 xenograft, using Glycine dehydrogenase (TA308885) antibody at 1:500 dilution.



Glycine dehydrogenase antibody [N3C2-2], Internal detects Glycine dehydrogenase protein at mitochondria by immunofluorescent analysis. Sample: HepG2 cells were fixed in ice-cold MeOH for 5 min. Green: Glycine dehydrogenase protein stained by Glycine dehyd

