

Product datasheet for **TA308884**

GAPDH Rabbit Polyclonal Antibody

Product data:

Product Type:	Primary Antibodies
Applications:	IF, IHC, WB
Recommended Dilution:	ICC/IF:1:100-1:1000; IHC:1:100-1:1000; WB:1:5000-1:20000
Reactivity:	Human, Mouse (Predicted: Feline, Chicken, Dog, Drosophila, Monkey, Pig, Rabbit, Xenopus, Zebrafish, Bovine)
Host:	Rabbit
Isotype:	IgG
Clonality:	Polyclonal
Immunogen:	Recombinant fragment corresponding to a region within amino acids 1 and 335 of GAPDH (Uniprot ID#P04406)
Formulation:	1XPBS, 1% BSA, 20% Glycerol (pH7). 0.025% ProClin 300 was added as a preservative.
Purification:	Purified by antigen-affinity chromatography.
Conjugation:	Unconjugated
Storage:	Store at -20°C as received.
Stability:	Stable for 12 months from date of receipt.
Predicted Protein Size:	36 kDa
Gene Name:	glyceraldehyde-3-phosphate dehydrogenase
Database Link:	NP_002037 Entrez Gene 14433 Mouse Entrez Gene 403755 Dog Entrez Gene 574353 Monkey Entrez Gene 2597 Human P04406
Background:	The product of this gene catalyzes an important energy-yielding step in carbohydrate metabolism, the reversible oxidative phosphorylation of glyceraldehyde-3-phosphate in the presence of inorganic phosphate and nicotinamide adenine dinucleotide (NAD). The enzyme exists as a tetramer of identical chains. Many pseudogenes similar to this locus are present in the human genome. [provided by RefSeq]
Synonyms:	G3PD; GAPD; HEL-S-162eP



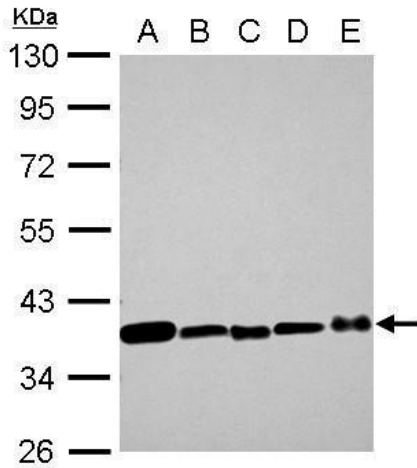
[View online »](#)

Note: Seq homology of immunogen across species: Cat (96%), Chicken (92%), Dog (95%), Monkey (99%), Pig (95%), Rabbit (94%), Xenopus laevis (85%), Zebrafish (86%), Bovine (94%)

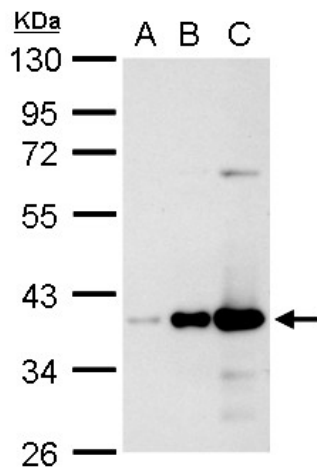
Protein Families: ES Cell Differentiation/IPS

Protein Pathways: Alzheimer's disease, Glycolysis / Gluconeogenesis, Metabolic pathways

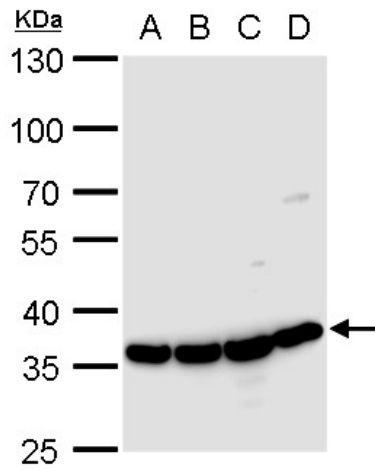
Product images:



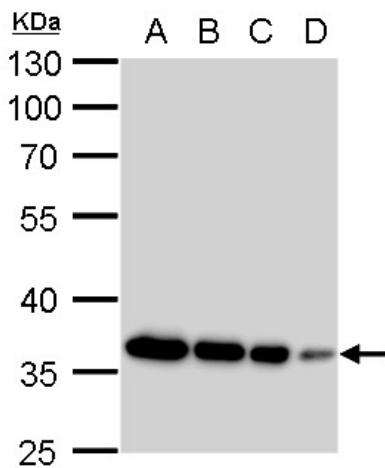
GAPDH antibody detects GAPDH protein by Western blot analysis. A. 30 ug 293T whole cell lysate/extract. B. 30 ug NIH-3T3 whole cell lysate/extract. C. 30 ug mouse brain lysate/extract. D. 30 ug PC-12 whole cell lysate/extract. E. 30 ug rat brain lysate/ex



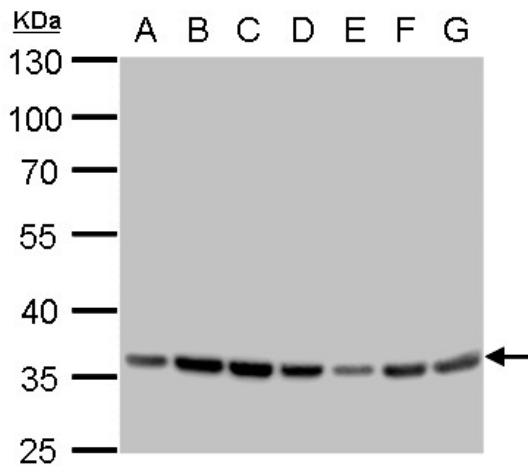
GAPDH antibody detects GAPDH protein by Western blot analysis. A. 0.1 ug 293T whole cell lysate/extract. B. 1 ug 293T whole cell lysate/extract. C. 10 ug 293T whole cell lysate/extract. 12 % SDS-PAGE. GAPDH antibody (TA308884) dilution: 1:10000



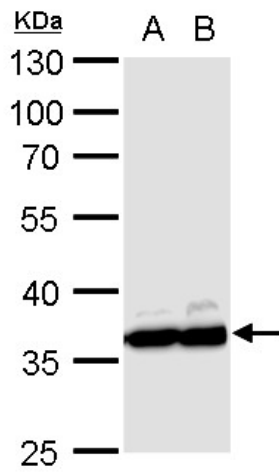
GAPDH antibody detects GAPDH protein by western blot analysis. A. 30 ug 293T whole cell lysate/extract. B. 30 ug A431 whole cell lysate/extract. C. 30 ug HeLa whole cell lysate/extract. D. 30 ug HepG2 whole cell lysate/extract. 10 % SDS-PAGE. GAPDH anti



GAPDH antibody detects GAPDH protein by western blot analysis. A. 20 ug 293T whole cell lysate/extract. B. 10 ug 293T whole cell lysate/extract. C. 5 ug 293T whole cell lysate/extract. D. 1 ug 293T whole cell lysate/extract. 10 % SDS-PAGE. GAPDH antibody



GAPDH antibody detects GAPDH protein by western blot analysis. A. 30 ug Neuro2A whole cell lysate/extract. B. 30 ug GL261 whole cell lysate/extract. C. 30 ug C8D30 whole cell lysate/extract. D. 30 ug NIH-3T3 whole cell lysate/extract. E. 30 ug BCL-1 whole



GAPDH antibody detects GAPDH protein by western blot analysis. A. 30 ug PC-12 whole cell lysate/extract. B. 30 ug Rat2 whole cell lysate/extract. 10 % SDS-PAGE. GAPDH antibody (TA308884) dilution: 1:10000

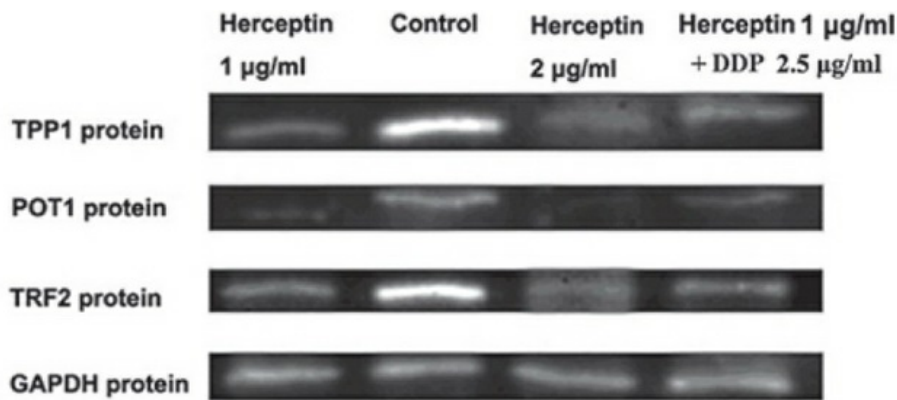
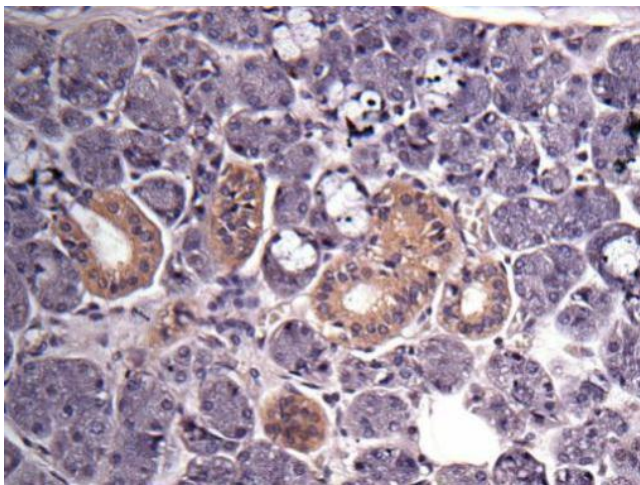
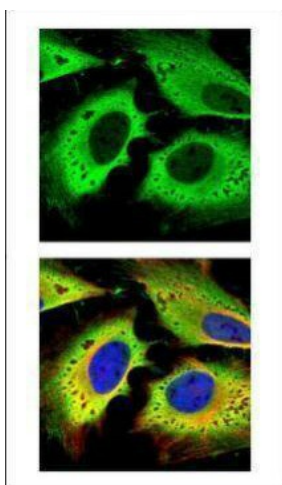


Figure from citation: Western blot analysis of GAPDH protein expression by using anti-GAPDH antibody in NCI-N87 cells. Dilution: 1:10000 [View Citation](#)



Immunohistochemical analysis of Salivary gland cancer, using GAPDH (TA308884) antibody at 1:500 dilution.



Confocal immunofluorescence analysis (Olympus FV10i) of paraformaldehyde-fixed HeLa, using GAPDH (TA308884) antibody (green) at 1:500 dilution. Alpha-tubulin filaments were labeled with anti-alpha tubulin antibody (red) at 1:2000.