

Product datasheet for **TA308882**

GALNT2 Rabbit Polyclonal Antibody

Product data:

Product Type:	Primary Antibodies
Applications:	IF, IHC, WB
Recommended Dilution:	ICC/IF:1:100-1:1000; IHC:1:100-1:1000; WB:1:500-1:3000
Reactivity:	Human, Mouse (Predicted: Rhesus Monkey)
Host:	Rabbit
Isotype:	IgG
Clonality:	Polyclonal
Immunogen:	Recombinant fragment corresponding to a region within amino acids 55 and 369 of GALNT2 (Uniprot ID#Q10471)
Formulation:	0.1M Tris, 0.1M Glycine, 10% Glycerol (pH7). 0.01% Thimerosal was added as a preservative.
Concentration:	lot specific
Purification:	Purified by antigen-affinity chromatography.
Conjugation:	Unconjugated
Storage:	Store at -20°C as received.
Stability:	Stable for 12 months from date of receipt.
Predicted Protein Size:	65 kDa
Gene Name:	polypeptide N-acetylgalactosaminyltransferase 2
Database Link:	NP_004472 Entrez Gene 108148 Mouse Entrez Gene 2590 Human Q10471
Background:	This gene encodes polypeptide N-acetylgalactosaminyltransferase 2, a member of the GalNAc-transferases family. This family transfers an N-acetyl galactosamine to the hydroxyl group of a serine or threonine residue in the first step of O-linked oligosaccharide biosynthesis. Individual GalNAc-transferases have distinct activities and initiation of O-glycosylation in a cell is regulated by a repertoire of GalNAc-transferases. [provided by RefSeq]
Synonyms:	GalNAc-T2



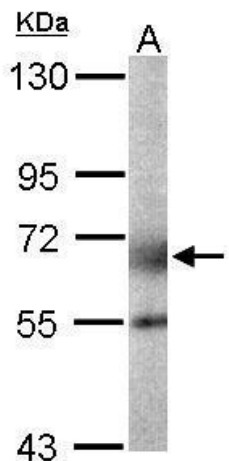
[View online »](#)

Note: Seq homology of immunogen across species: Rhesus Monkey (100%)

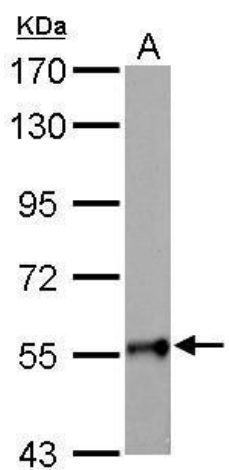
Protein Families: Secreted Protein, Transmembrane

Protein Pathways: Metabolic pathways, O-Glycan biosynthesis

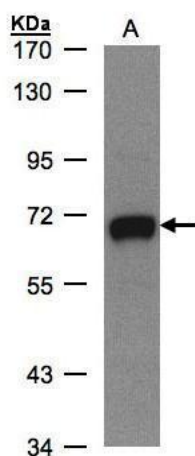
Product images:



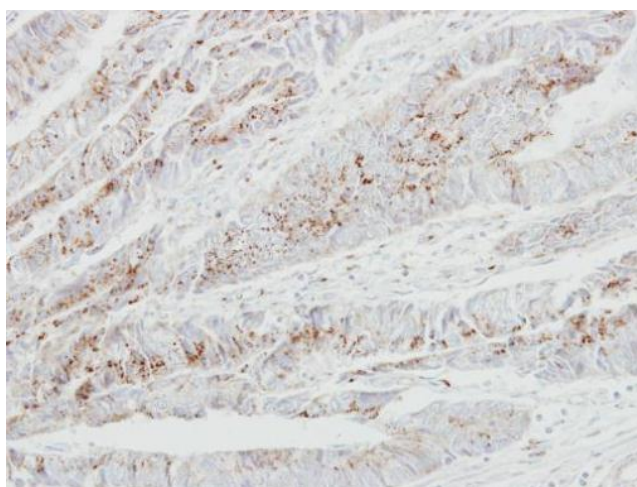
Sample (50 ug of whole cell lysate). A: Mouse white adipose tissue. 7.5% SDS PAGE. TA308882 diluted at 1:1000.



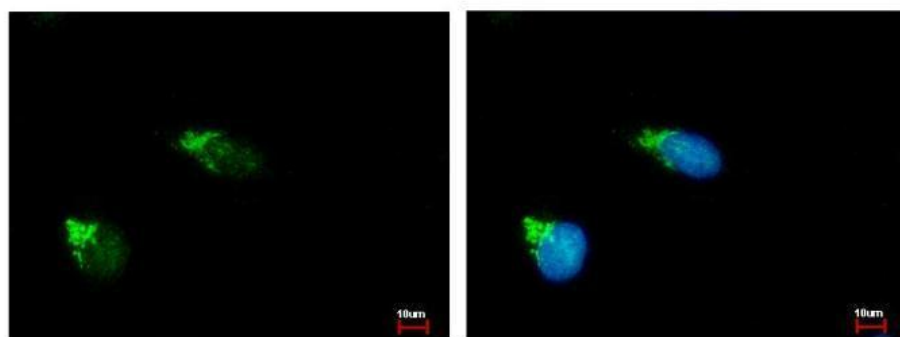
GALNT2 antibody detects GALNT2 protein by Western blot analysis. A. 50 ug rat brain lysate/extract. 7.5 % SDS-PAGE. GALNT2 antibody (TA308882) dilution: 1:1000



Sample (30 ug whole cell lysate). A: MOLT4. 7.5% SDS PAGE. TA308882 diluted at 1:500



Immunohistochemical analysis of paraffin-embedded Colon ca, using GALNT2 (TA308882) antibody at 1:250 dilution.



GALNT2 antibody [N1C1] detects GALNT2 protein at Golgi apparatus by immunofluorescent analysis. Sample: HeLa cells were fixed in ice-cold MeOH for 5 min. Green: GALNT2 protein stained by GALNT2 antibody [N1C1] (TA308882) diluted at 1:500. Blue: Hoechst 33