

## Product datasheet for **TA308881**

### **GAD67 (GAD1) Rabbit Polyclonal Antibody**

#### **Product data:**

<b>Product Type:</b>	Primary Antibodies
<b>Applications:</b>	IF, IHC, WB
<b>Recommended Dilution:</b>	ICC/IF:1:100-1:1000; IHC:1:100-1:1000; WB:1:1000-1:10000
<b>Reactivity:</b>	Human, Mouse, Rat (Predicted: Chimpanzee)
<b>Host:</b>	Rabbit
<b>Isotype:</b>	IgG
<b>Clonality:</b>	Polyclonal
<b>Immunogen:</b>	Recombinant fragment corresponding to a region within amino acids 5 and 216 of GAD67 (Uniprot ID#Q99259)
<b>Formulation:</b>	1XPBS, 1% BSA, 20% Glycerol (pH7). 0.025% ProClin 300 was added as a preservative.
<b>Concentration:</b>	lot specific
<b>Purification:</b>	Purified by antigen-affinity chromatography.
<b>Conjugation:</b>	Unconjugated
<b>Storage:</b>	Store at -20°C as received.
<b>Stability:</b>	Stable for 12 months from date of receipt.
<b>Predicted Protein Size:</b>	67 kDa
<b>Gene Name:</b>	glutamate decarboxylase 1
<b>Database Link:</b>	<a href="#">NP_038473</a> <a href="#">Entrez Gene 14415 Mouse</a> <a href="#">Entrez Gene 24379 Rat</a> <a href="#">Entrez Gene 2571 Human</a> <a href="#">Q99259</a>
<b>Background:</b>	This gene encodes one of several forms of glutamic acid decarboxylase, identified as a major autoantigen in insulin-dependent diabetes. The enzyme encoded is responsible for catalyzing the production of gamma-aminobutyric acid from L-glutamic acid. A pathogenic role for this enzyme has been identified in the human pancreas since it has been identified as an autoantigen and an autoreactive T cell target in insulin-dependent diabetes. This gene may also play a role in the stiff man syndrome. Deficiency in this enzyme has been shown to lead to pyridoxine dependency with seizures. Alternative splicing of this gene results in two products, the predominant 67-kD form and a less-frequent 25-kD form. [provided by RefSeq]



[View online »](#)

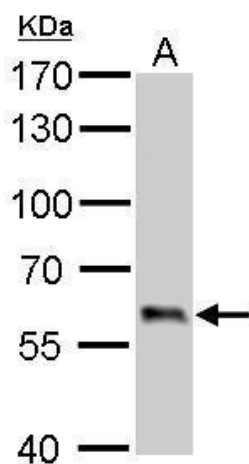
**Synonyms:** CPSQ1; GAD; SCP

**Note:** Seq homology of immunogen across species: Chimpanzee (100%)

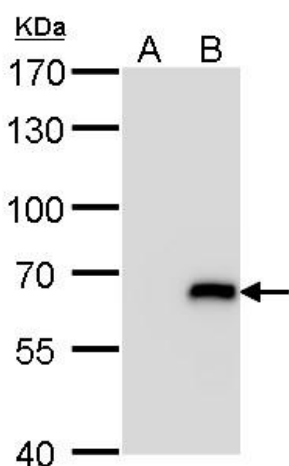
**Protein Families:** Druggable Genome

**Protein Pathways:** Alanine, aspartate and glutamate metabolism, beta-Alanine metabolism, Butanoate metabolism, Metabolic pathways, Taurine and hypotaurine metabolism, Type I diabetes mellitus

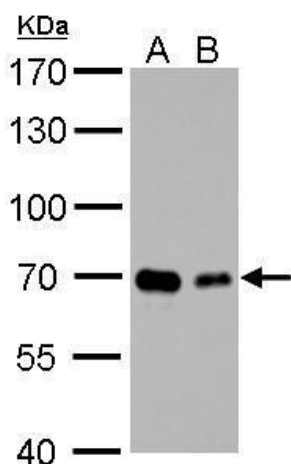
### Product images:



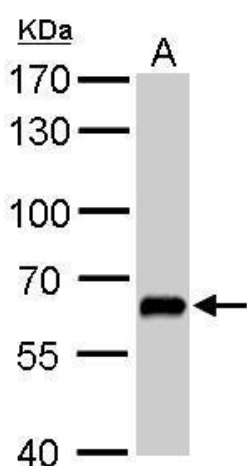
GAD67 antibody detects GAD67 protein by Western blot analysis. A. 50 ug rat brain lysate/extract. 7.5 % SDS-PAGE. GAD67 antibody (TA308881) dilution: 1:500



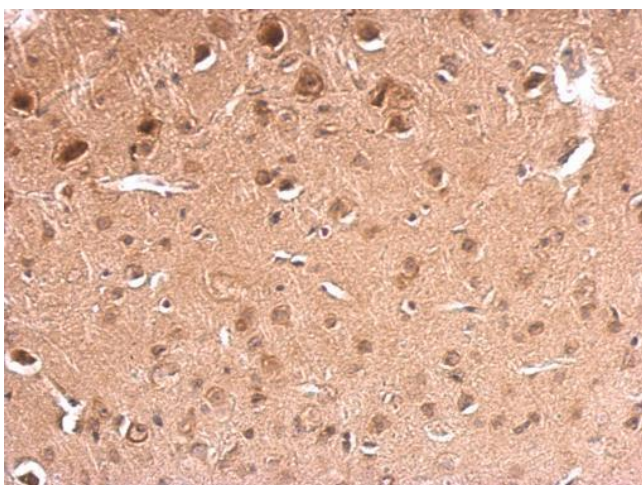
GAD67 antibody detects GAD67 protein by Western blot analysis. A. 30 ug 293T whole cell lysate/extract. B. 30 ug whole cell lysate/extract of human GAD1-transfected 293T cells. 7.5 % SDS-PAGE. GAD67 antibody (TA308881) dilution: 1:5000



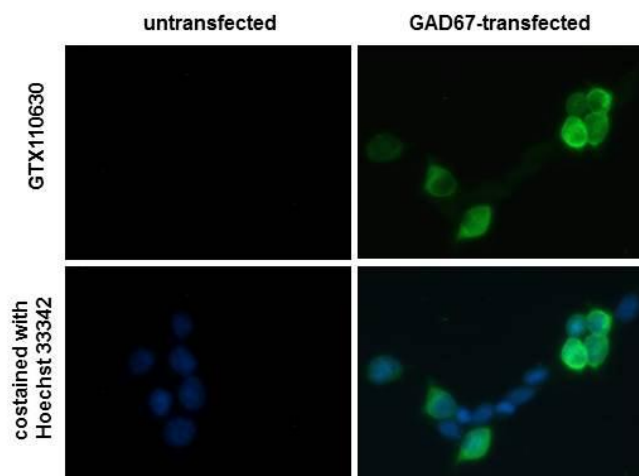
GAD67 antibody detects GAD67 protein by Western blot analysis. A. 30 ug SK-N-SH whole cell lysate/extract. B. 30 ug SK-N-AS whole cell lysate/extract. 7.5 % SDS-PAGE. GAD67 antibody (TA308881) dilution: 1:500



GAD67 antibody detects GAD67 protein by Western blot analysis. A. 50 ug mouse brain lysate/extract. 7.5 % SDS-PAGE. GAD67 antibody (TA308881) dilution: 1:500



GAD67 antibody detects GAD67 protein at on mouse fore brain by immunohistochemical analysis. Sample: Paraffin-embedded mouse fore brain. GAD67 antibody (TA308881) dilution: 1:500.



GAD67 antibody detects GAD67 protein by immunofluorescent analysis. @Sample: GAD67-transfected (right) or untransfected (left) 293T cells were fixed in 4% paraformaldehyde for 15 min.