

Product datasheet for **TA308880**

FMO1 Rabbit Polyclonal Antibody

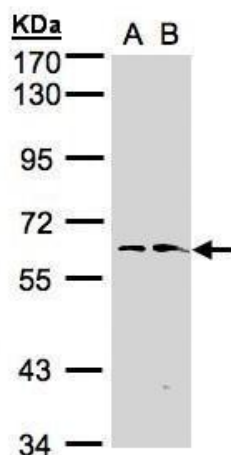
Product data:

Product Type:	Primary Antibodies
Applications:	WB
Recommended Dilution:	WB:1:500-1:3000
Reactivity:	Human (Predicted: Mouse, Dog, Pig, Rat, Bovine)
Host:	Rabbit
Isotype:	IgG
Clonality:	Polyclonal
Immunogen:	Recombinant fragment corresponding to a region within amino acids 1 and 437 of FMO1 (Uniprot ID#Q01740)
Formulation:	0.1M Tris, 0.1M Glycine, 10% Glycerol (pH7). 0.01% Thimerosal was added as a preservative.
Concentration:	lot specific
Purification:	Purified by antigen-affinity chromatography.
Conjugation:	Unconjugated
Storage:	Store at -20°C as received.
Stability:	Stable for 12 months from date of receipt.
Predicted Protein Size:	60 kDa
Gene Name:	flavin containing monooxygenase 1
Database Link:	NP_002012 Entrez Gene 14261 MouseEntrez Gene 25256 RatEntrez Gene 403604 DogEntrez Gene 2326 Human Q01740



[View online »](#)

- Background:** Metabolic N-oxidation of the diet-derived amino-trimethylamine (TMA) is mediated by flavin-containing monooxygenase and is subject to an inherited FMO3 polymorphism in man resulting in a small subpopulation with reduced TMA N-oxidation capacity resulting in fish odor syndrome Trimethylaminuria. Three forms of the enzyme, FMO1 found in fetal liver, FMO2 found in adult liver, and FMO3 are encoded by genes clustered in the 1q23-q25 region. Flavin-containing monooxygenases are NADPH-dependent flavoenzymes that catalyzes the oxidation of soft nucleophilic heteroatom centers in drugs, pesticides, and xenobiotics. [provided by RefSeq]
- Synonyms:** Flavin-containing monooxygenase 1 (fetal liver); flavin containing monooxygenase 1; OTTHUMP00000033536; OTTHUMP00000033537
- Note:** Seq homology of immunogen across species: Mouse (83%), Dog (88%), Pig (86%), Rat (82%), Bovine (85%)
- Protein Families:** Druggable Genome
- Protein Pathways:** Drug metabolism - cytochrome P450
- Product images:**



Sample (30 ug whole cell lysate). A:Hep G2. B:Raji.
7.5% SDS PAGE. TA308880 diluted at 1:1000