

Product datasheet for **TA308879**

Fukutin (FKTN) Rabbit Polyclonal Antibody

Product data:

Product Type:	Primary Antibodies
Applications:	IF, WB
Recommended Dilution:	ICC/IF:1:100-1:1000; WB:1:500-1:3000
Reactivity:	Human (Predicted: Mouse, Rat)
Host:	Rabbit
Isotype:	IgG
Clonality:	Polyclonal
Immunogen:	Recombinant fragment corresponding to a region within amino acids 222 and 461 of Fukutin (Uniprot ID#O75072)
Formulation:	0.1M Tris, 0.1M Glycine, 10% Glycerol (pH7). 0.01% Thimerosal was added as a preservative.
Concentration:	lot specific
Purification:	Purified by antigen-affinity chromatography.
Conjugation:	Unconjugated
Storage:	Store at -20°C as received.
Stability:	Stable for 12 months from date of receipt.
Predicted Protein Size:	54 kDa
Gene Name:	fukutin
Database Link:	NP_001073270 Entrez Gene 246179 MouseEntrez Gene 362520 RatEntrez Gene 2218 Human O75072
Background:	The protein encoded by this gene is a putative transmembrane protein that is localized to the cis-Golgi compartment, where it may be involved in the glycosylation of alpha-dystroglycan in skeletal muscle. The encoded protein is thought to be a glycosyltransferase and could play a role in brain development. Defects in this gene are a cause of Fukuyama-type congenital muscular dystrophy (FCMD), Walker-Warburg syndrome (WWS), limb-girdle muscular dystrophy type 2M (LGMD2M), and dilated cardiomyopathy type 1X (CMD1X). Two transcript variants encoding the same protein have been found for this gene. [provided by RefSeq]
Synonyms:	CMD1X; FCMD; LGMD2M; MDDGA4; MDDGB4; MDDGC4

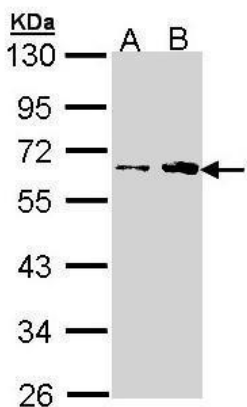


[View online »](#)

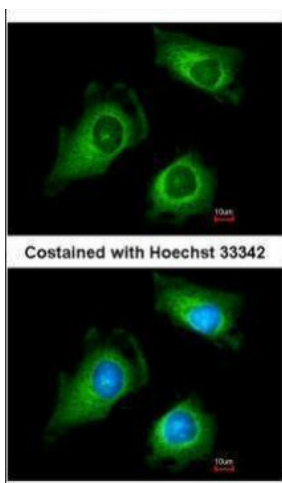
Note: Seq homology of immunogen across species: Mouse (90%), Rat (91%)

Protein Families: Transmembrane

Product images:



Sample (30 ug of whole cell lysate). A: H1299. B: HeLa. 10% SDS PAGE. TA308879 diluted at 1:1000.



Immunofluorescence analysis of methanol-fixed HeLa, using Fukutin (TA308879) antibody at 1:200 dilution.