

Product datasheet for **TA308874**

Factor VII (F7) Rabbit Polyclonal Antibody

Product data:

Product Type:	Primary Antibodies
Applications:	IHC, WB
Recommended Dilution:	IHC:1:100-1:1000; WB:1:500-1:3000
Reactivity:	Human, Mouse (Predicted: Monkey)
Host:	Rabbit
Isotype:	IgG
Clonality:	Polyclonal
Immunogen:	Recombinant fragment corresponding to a region within amino acids 209 and 466 of Factor VII (Uniprot ID#P08709)
Formulation:	0.1M Tris, 0.1M Glycine, 10% Glycerol (pH7). 0.01% Thimerosal was added as a preservative.
Concentration:	lot specific
Purification:	Purified by antigen-affinity chromatography.
Conjugation:	Unconjugated
Storage:	Store at -20°C as received.
Stability:	Stable for 12 months from date of receipt.
Predicted Protein Size:	52 kDa
Gene Name:	coagulation factor VII
Database Link:	NP_000122 Entrez Gene 14068 Mouse Entrez Gene 721933 Monkey Entrez Gene 2155 Human P08709



[View online »](#)

Background:

This gene encodes coagulation factor VII which is a vitamin K-dependent factor essential for hemostasis. This factor circulates in the blood in a zymogen form, and is converted to an active form by either factor IXa, factor Xa, factor XIIa, or thrombin by minor proteolysis. Upon activation of the factor VII, a heavy chain containing a catalytic domain and a light chain containing 2 EGF-like domains are generated, and two chains are held together by a disulfide bond. In the presence of factor III and calcium ions, the activated factor then further activates the coagulation cascade by converting factor IX to factor IXa and/or factor X to factor Xa. Alternative splicing of this gene results in 2 transcripts. Defects in this gene can cause coagulopathy. [provided by RefSeq]

Synonyms:

SPCA

Note:

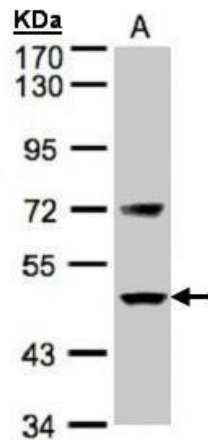
Seq homology of immunogen across species: Monkey (91%)

Protein Families:

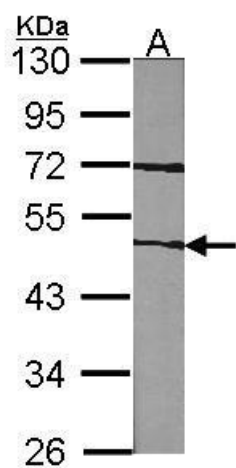
Druggable Genome, Protease

Protein Pathways:

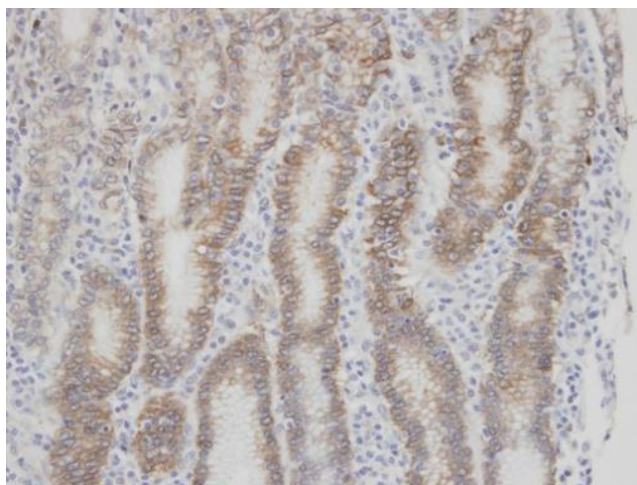
Complement and coagulation cascades

Product images:

Sample (30 ug of whole cell lysate). A:H1299.
7.5% SDS PAGE. TA308874 diluted at 1:500



Sample (30 ug of whole cell lysate). A:NIH-3T3.
10% SDS PAGE. TA308874 diluted at 1:1000.



Immunohistochemical analysis of paraffin-
embedded normal gastric epithelium (gland),
using F7 (TA308874) antibody at 1:100 dilution.