

Product datasheet for **TA308873**

Non Neuronal Enolase (ENO1) Rabbit Polyclonal Antibody

Product data:

Product Type:	Primary Antibodies
Applications:	IF, IHC, WB
Recommended Dilution:	Dot:blot:: ICC/IF:1:100-1:1000; IHC:1:100-1:1000; WB:1:500-1:3000
Reactivity:	Human, Mouse (Predicted: Chimpanzee, Rhesus Monkey)
Host:	Rabbit
Isotype:	IgG
Clonality:	Polyclonal
Immunogen:	Recombinant fragment corresponding to a region within amino acids 199 and 434 of ENO1 (Uniprot ID#P06733)
Formulation:	0.1M Tris, 0.1M Glycine, 10% Glycerol (pH7). 0.01% Thimerosal was added as a preservative.
Concentration:	lot specific
Purification:	Purified by antigen-affinity chromatography.
Conjugation:	Unconjugated
Storage:	Store at -20°C as received.
Stability:	Stable for 12 months from date of receipt.
Predicted Protein Size:	47 kDa
Gene Name:	enolase 1
Database Link:	NP_001419 Entrez Gene 13806 Mouse Entrez Gene 2023 Human P06733
Background:	This gene encodes one of three enolase isoenzymes found in mammals; it encodes alpha-enolase, a homodimeric soluble enzyme, and also encodes a shorter monomeric structural lens protein, tau-crystallin. The two proteins are made from the same message. The full length protein, the isoenzyme, is found in the cytoplasm. The shorter protein is produced from an alternative translation start, is localized to the nucleus, and has been found to bind to an element in the c-myc promoter. A pseudogene has been identified that is located on the other arm of the same chromosome. [provided by RefSeq]
Synonyms:	ENO1L1; MPB1; NNE; PPH



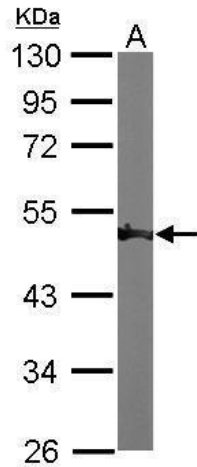
[View online »](#)

Note: Seq homology of immunogen across species: Rhesus Monkey (100%), Chimpanzee (100%)

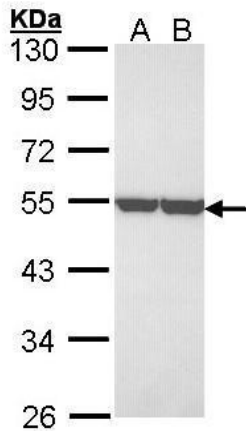
Protein Families: Druggable Genome, Transcription Factors

Protein Pathways: Glycolysis / Gluconeogenesis, Metabolic pathways, RNA degradation

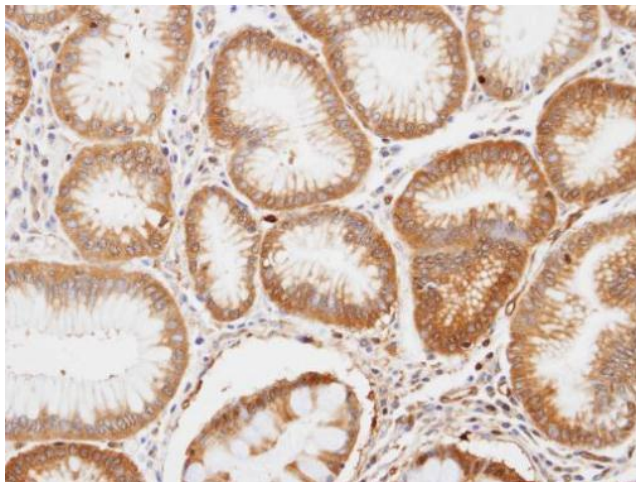
Product images:



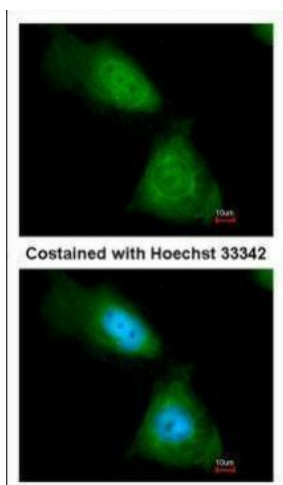
Sample (50 ug of whole cell lysate). A: Mouse brain. 10% SDS PAGE. TA308873 diluted at 1:1000.



Sample (30 ug of whole cell lysate). A: A431. B: H1299. 10% SDS PAGE. TA308873 diluted at 1:3000



Immunohistochemical analysis of paraffin-embedded gastric tissue, using ENO1 (TA308873) antibody at 1:100 dilution.



Immunofluorescence analysis of paraformaldehyde-fixed HeLa, using enolase 1 (TA308873) antibody at 1:200 dilution.