

## Product datasheet for **TA308869**

### COX4 (COX4I1) Rabbit Polyclonal Antibody

#### Product data:

Product Type:	Primary Antibodies
Applications:	IF, IHC, WB
Recommended Dilution:	ICC/IF:1:100-1:1000; IHC:1:100-1:1000; WB:1:500-1:3000
Reactivity:	Human (Predicted: Chimpanzee)
Host:	Rabbit
Isotype:	IgG
Clonality:	Polyclonal
Immunogen:	Recombinant fragment corresponding to a region within amino acids 1 and 169 of COX4 (Uniprot ID#P13073)
Formulation:	0.1M Tris, 0.1M Glycine, 10% Glycerol (pH7). 0.01% Thimerosal was added as a preservative.
Concentration:	lot specific
Purification:	Purified by antigen-affinity chromatography.
Conjugation:	Unconjugated
Storage:	Store at -20°C as received.
Stability:	Stable for 12 months from date of receipt.
Predicted Protein Size:	20 kDa
Gene Name:	cytochrome c oxidase subunit 4I1
Database Link:	<a href="#">NP_001852</a> <a href="#">Entrez Gene 1327 Human P13073</a>



[View online »](#)

**Background:** Cytochrome c oxidase (COX) is the terminal enzyme of the mitochondrial respiratory chain. It is a multi-subunit enzyme complex that couples the transfer of electrons from cytochrome c to molecular oxygen and contributes to a proton electrochemical gradient across the inner mitochondrial membrane. The complex consists of 13 mitochondrial- and nuclear-encoded subunits. The mitochondrially-encoded subunits perform the electron transfer and proton pumping activities. The functions of the nuclear-encoded subunits are unknown but they may play a role in the regulation and assembly of the complex. This gene encodes the nuclear-encoded subunit IV isoform 1 of the human mitochondrial respiratory chain enzyme. It is located at the 3' of the NOC4 (neighbor of COX4) gene in a head-to-head orientation, and shares a promoter with it. [provided by RefSeq]

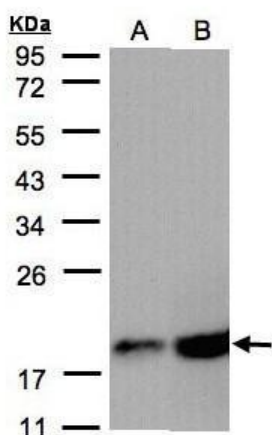
**Synonyms:** COX4; COX4-1; COXIV; COX IV-1; COXIV-1

**Note:** Seq homology of immunogen across species: Chimpanzee (100%)

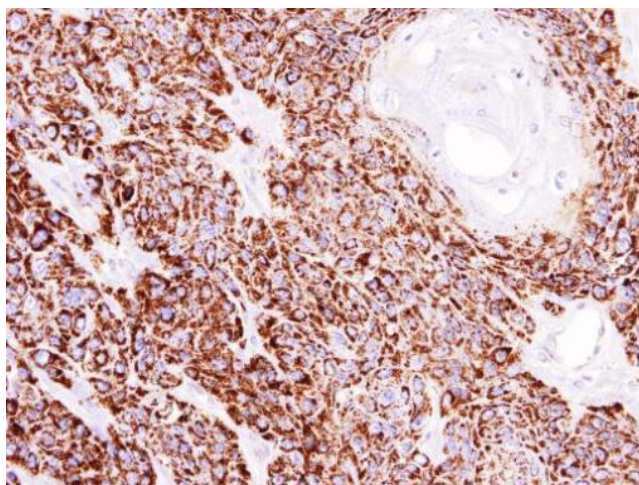
**Protein Families:** Transmembrane

**Protein Pathways:** Alzheimer's disease, Cardiac muscle contraction, Huntington's disease, Metabolic pathways, Oxidative phosphorylation, Parkinson's disease

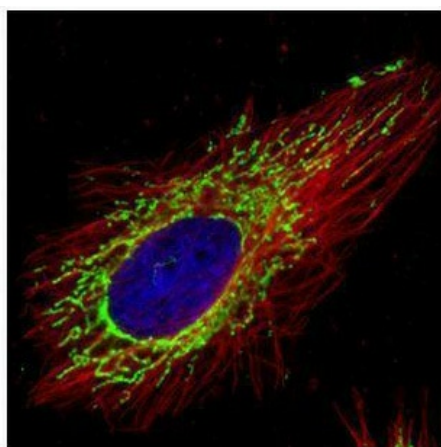
### Product images:



Sample (30 ug of whole cell lysate). A:A431.  
B:MOLT4. 12% SDS PAGE. TA308869 diluted at 1:2000



Immunohistochemical analysis of paraffin-embedded CA922 xenograft, using COX4 (TA308869) antibody at 1:100 dilution.



Confocal immunofluorescence analysis (Olympus FV10i) of methanol-fixed HeLa, using COX4 (TA308869) antibody (Green) at 1:500 dilution. Alpha-tubulin filaments were labeled with anti-alpha tubulin antibody (Red) at 1:2000.