

## Product datasheet for **TA308868**

### Chloride Channel 5 (CLCN5) Rabbit Polyclonal Antibody

#### Product data:

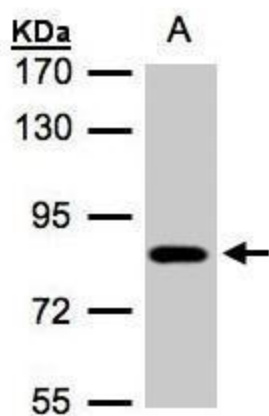
Product Type:	Primary Antibodies
Applications:	WB
Recommended Dilution:	WB:1:500-1:3000
Reactivity:	Human (Predicted: Mouse, Rabbit, Rat, Xenopus, X. tropicalis)
Host:	Rabbit
Isotype:	IgG
Clonality:	Polyclonal
Immunogen:	Recombinant fragment corresponding to a region within amino acids 62 and 393 of CLC-5 (Uniprot ID#P51795)
Formulation:	0.1M Tris, 0.1M Glycine, 10% Glycerol (pH7). 0.01% Thimerosal was added as a preservative.
Concentration:	lot specific
Purification:	Purified by antigen-affinity chromatography.
Conjugation:	Unconjugated
Storage:	Store at -20°C as received.
Stability:	Stable for 12 months from date of receipt.
Predicted Protein Size:	83 kDa
Gene Name:	chloride voltage-gated channel 5
Database Link:	<a href="#">NP_001121371</a> <a href="#">Entrez Gene 12728 MouseEntrez Gene 25749 RatEntrez Gene 1184 Human P51795</a>
Background:	This gene encodes a member of the CIC family of chloride ion channels and ion transporters. Mutations in this gene have been found in Dent disease and renal tubular disorders complicated by nephrolithiasis. Alternatively spliced transcript variants encoding different isoforms have been found for this gene. [provided by RefSeq]
Synonyms:	CIC-5; CLC5; CLCK2; DENTS; hCIC-K2; NPHL1; NPHL2; XLRH; XRN
Note:	Seq homology of immunogen across species: Mouse (96%), Rabbit (98%), Rat (97%), Xenopus laevis (86%), Xenopus tropicalis (87%)



[View online »](#)

Protein Families: Druggable Genome, Ion Channels: Other, Transmembrane

**Product images:**



Sample (30 ug of whole cell lysate). A:A431. 7.5% SDS PAGE. TA308868 diluted at 1:500